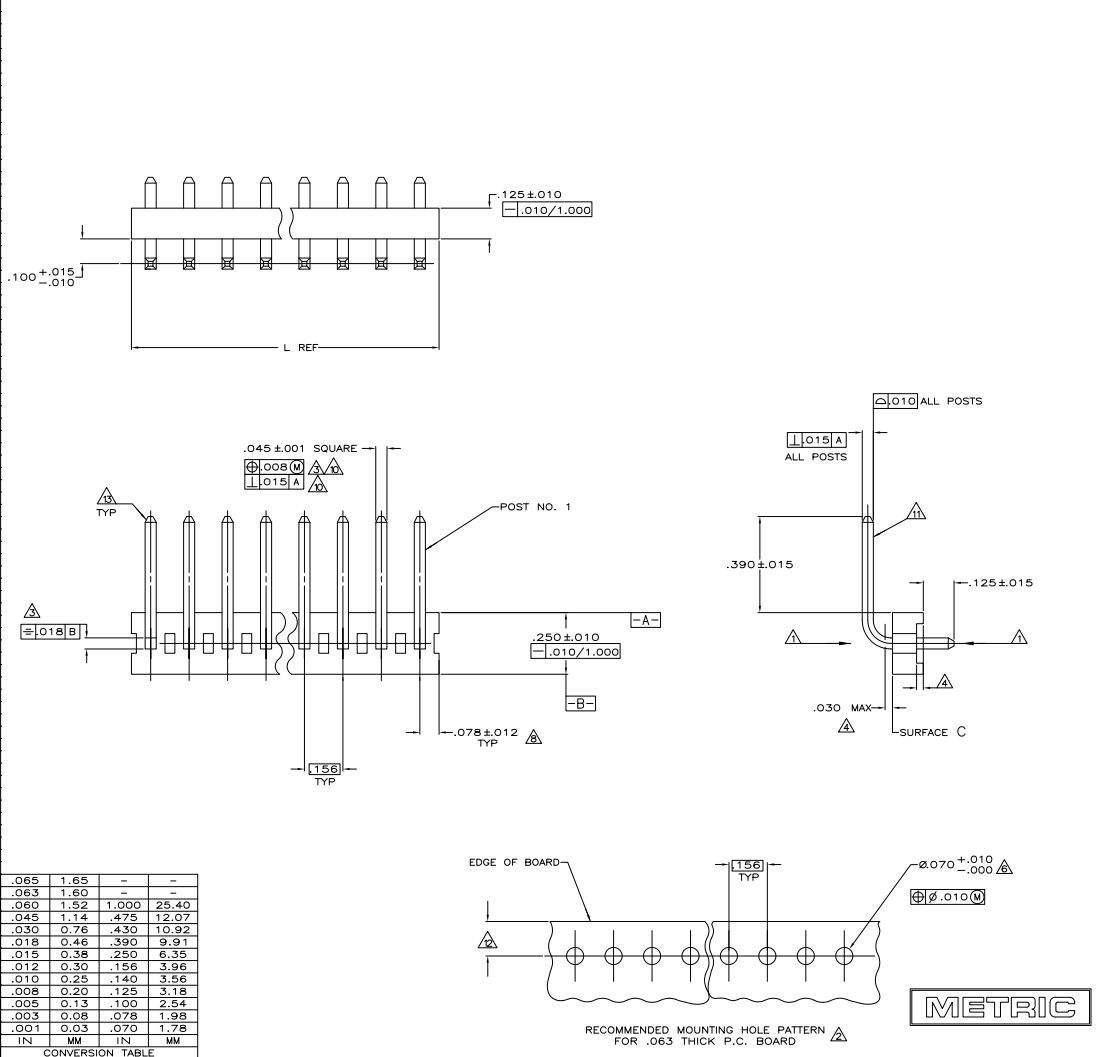


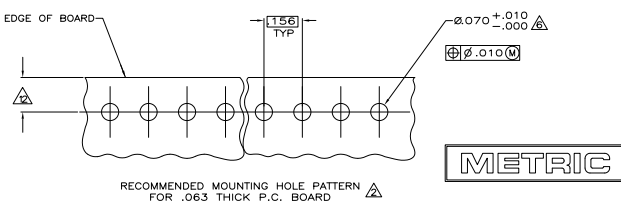
REV	DATE	REVISIONS	BY	CHK	APP
CM 54	7/11/91	REVISION			
		REVISED PER ECD-11-004820	11MR11	RK	HMR



- △ POST TO WITHSTAND 13 NEWTONS (3LBS.) MIN. AXIAL FORCE IN BOTH DIRECTIONS SHOWN WITHOUT DISLODGING. TOLERANCES APPLY TO SOLDER SIDE OF BOARD.
- △ PLASTIC FLASH PERMITTED IN THIS AREA.
- △ MEASURED AT SURFACE C.
- △ PARTS COMPLY WITH AMP SOLDERABILITY SPEC. NO. 109-11-2
- △ ONE HOLE MAY BE UNDERSIZED (.065/.060 DIA.) FOR ASSEMBLY RETENTION DURING WAVE SOLDERING.
- △ MATERIAL: HEADER-THERMOPLASTIC POLYESTER GLASS-FILLED 94V-0(NATURAL) POST-COPPER ALLOY (TIN PLATED)
- △ COORDINATE DIMENSION APPLIES FROM CENTER OF ACTUAL FEATURE.
- 9. PLASTIC BURRS CAUSED BY CUT-OFF TOOLING ARE PERMITTED WITHIN THE MAXIMUM TOLERANCE ENVELOPE.
- △ POST TO BE MEASURED WHEN STRIP IS HELD FLAT.
- △ POST MUST WITHSTAND TWO 90° BENDS AGAINST EXTRUSION WITHOUT BREAKING.
- △ DIMENSION SHOULD BE .140-.430 WHEN MATING WITH A MTA 156 CONNECTOR ASSEMBLY, .140 MIN WHEN MATING WITH A SL 156 WIRE-TO-BOARD CONNECTOR ASSEMBLY OR .140-.475 WHEN MATING WITH A SL 156 BOARD-TO-BOARD CONNECTOR ASSEMBLY.
- △ PIN BURR OF .005 MAX. VERTICAL AND .003 MAX. HORIZONTAL PERMITTED AT POST TIPS ON BOTH ENDS.

	MM	IN	MM	IN
.065	1.65	-	-	-
.063	1.60	-	-	-
.060	1.52	1.000	25.40	-
.045	1.14	.475	12.07	-
.030	0.76	.430	10.92	-
.018	0.46	.390	9.91	-
.015	0.38	.250	6.35	-
.012	0.30	.156	3.96	-
.010	0.25	.140	3.56	-
.008	0.20	.125	3.18	-
.005	0.13	.100	2.54	-
.003	0.08	.075	1.98	-
.001	0.03	.070	1.78	-
IN	MM	IN	MM	

3.744	95.10	24	2-640385-4
3.588	91.14	23	2-640385-3
3.432	87.17	22	2-640385-2
3.276	83.21	21	2-640385-1
3.120	79.25	20	2-640385-0
2.964	75.29	19	1-640385-9
2.808	71.32	18	1-640385-8
2.652	67.36	17	1-640385-7
2.496	63.40	16	1-640385-6
2.340	59.44	15	1-640385-5
2.184	55.47	14	1-640385-4
2.028	51.51	13	1-640385-3
1.872	47.55	12	1-640385-2
1.716	43.59	11	1-640385-1
1.560	39.62	10	1-640385-0
1.404	35.66	9	640385-9
1.248	31.70	8	640385-8
1.092	27.74	7	640385-7
0.936	23.77	6	640385-6
0.780	19.81	5	640385-5
0.624	15.85	4	640385-4
0.468	11.89	3	640385-3
0.312	7.92	2	640385-2
IN	MM	NUMBER OF POSITIONS	PART NUMBER



THIS DRAWING IS A CONTROLLED DOCUMENT. DATE: 10-15-91

REVISIONS: 10-15-91

TE Connectivity

MTA-156 HEADER ASSEMBLY, PLAN, RIGHT ANGLE, .040 SQUARE POST, TIN PLATED

00779 G=640385

CUSTOMER DRAWING

DATE: 8-1 1 1 V1