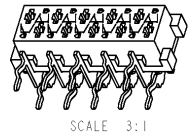
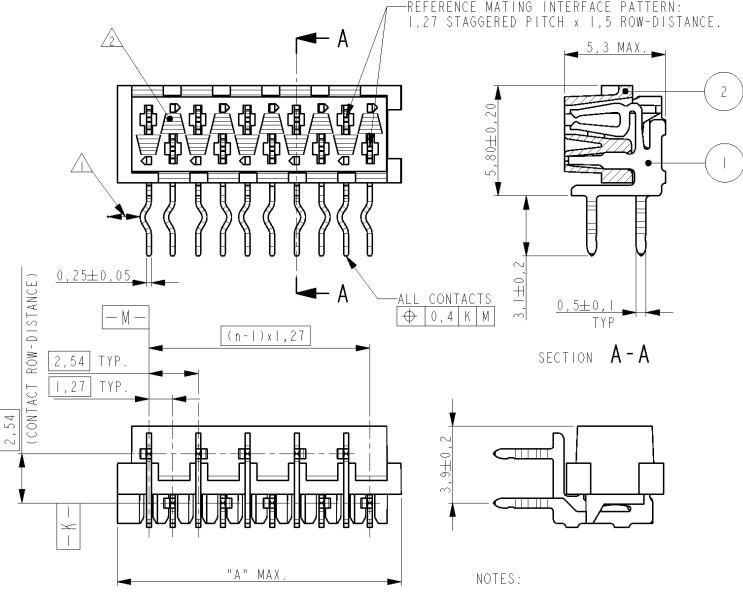
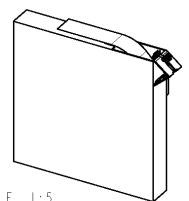


THIS DRAWING IS UNPUBLISHED. RELEASED FOR PUBLICATION  
 © COPYRIGHT BY ALL RIGHTS RESERVED.

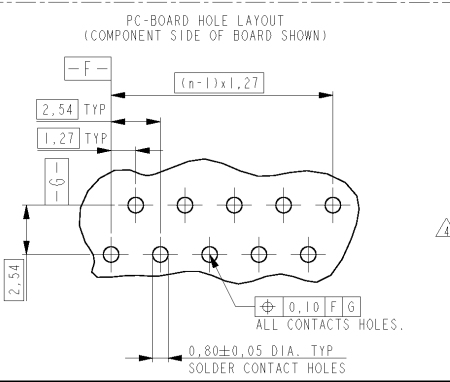
LOC		DIST		REVISIONS			
P	LTR	DESCRIPTION	DATE	DWN	AFVD		
V1		REVISED PER ECO-11-005294	27APR11	RK	HMR		



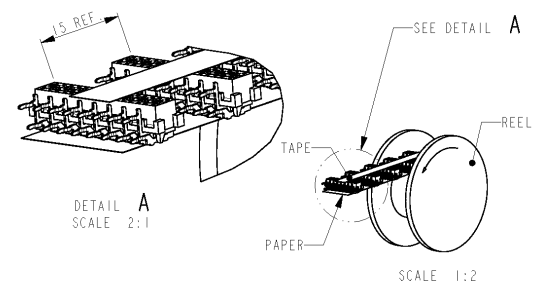
PARTNUMBER BOX PACKAGING	PARTNUMBER REEL PACKAGING	NR OF POS "n"	DIMENSION "A" MAX
7-215460-4	215460-4	4	7,1
7-215460-6	215460-6	6	9,7
7-215460-8	215460-8	8	12,2
8-215460-0	1-215460-0	10	14,7
8-215460-2	1-215460-2	12	17,3
8-215460-4	1-215460-4	14	19,8
8-215460-6	1-215460-6	16	22,4
8-215460-8	1-215460-8	18	24,9
9-215460-0	2-215460-0	20	27,4



BOX PACKAGING  
250 CONNECTORS PER BOX.  
FOR ALL PARTNUMBERS



- NOTES:
- ⚠ IN EACH ROW, DIRECTION OF KINKS STARTS RANDOM.
  - ⚠ IN EACH ROW, SEQUENTIAL CONTACTS HAVE OPPOSITE KINK DIRECTIONS.
  - ⚠ CORING-OUTS FOR MANUFACTURING PURPOSE ONLY.
  - ⚠ SHAPE MAY VARY, BUT IS NOT FUNCTIONAL FOR THE APPLICATION.
  - 3 SHOWN IS A 10 POSITION CONNECTOR.
  - ⚠ THIS AREA IS RESERVED FOR CONTACTS.



REEL PACKAGING  
DEREELING DIRECTION AND CONNECTOR POSITION.  
QUANTITY 2500 CONNECTORS PER REEL FOR ALL PARTNUMBERS,  
EXCEPT 4 POSITION 1500 CONNECTORS PER REEL

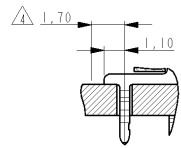
ITEM NO.	DESCRIPTION	MATERIAL	FINISH / COLOR
2	HOUSING	G.F. POLYESTER PBT	RED
1	FEMALE CONTACT	PHOSPHOR BRONZE	TIN OVER NICKEL

DWN	M. GOSSELINK	NAME	
CHK			
APVD			
PRODUCT SPEC	108-19052	SIZE	A3
APPLICATION SPEC		CAGE CODE	00779
WEIGHT		DRAWING NO	C-215460
MATERIAL	SEE TABLE	FINISH	SEE TABLE
CUSTOMER DRAWING		SCALE	5:1
		SHEET	1
		OF	1
		REV	V1

**TE Connectivity**

CONNECTOR,  
FEMALE-ON-BOARD SIDE-ENTRY,  
THRU-HOLE, Micro-MatCh



DIMENSIONS:	TOLERANCES UNLESS OTHERWISE SPECIFIED:
mm	
0 PLC	±
1 PLC	±
2 PLC	±
3 PLC	±
4 PLC	±
ANGLES	±
MATERIAL	SEE TABLE
FINISH	SEE TABLE