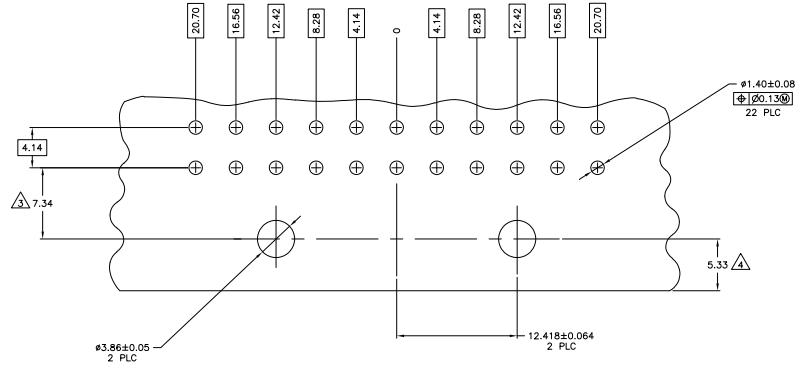
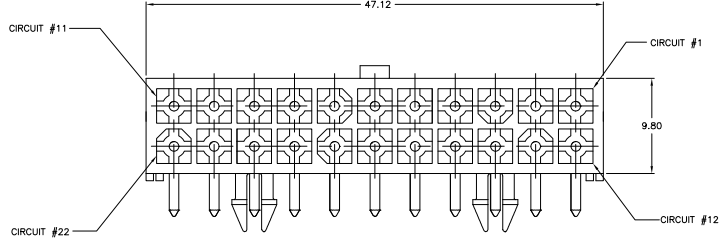
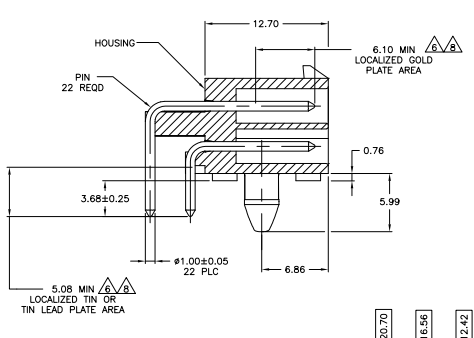


THIS DRAWING IS UNPUBLISHED. REPRODUCED FOR INFORMATION ONLY. ALL RIGHTS RESERVED.

REV	DATE	DESCRIPTION	BY	CHKD
CM	5.3			
B	02/28/03	0213.05		

- PINS TO COMPLY WITH AMP SOLDERABILITY SPEC 109-11-3.
 - MATES WITH PLUG P/N 770586-1.
- △ COORDINATE DIMENSION APPLIES FROM CENTER OF ACTUAL FEATURE.
- △ RECOMMENDED FOR EDGE MOUNTING.
- △ 0.00381 MIN MATTE TIN LEAD PLATE OVER 0.00127 MIN NICKEL.
- △ 0.00076 MIN GOLD PLATE IN THE LOCALIZED GOLD PLATE AREA, 0.00381 MIN MATTE TIN LEAD IN THE LOCALIZED PLATE AREA, BOTH OVER 0.00127 MIN NICKEL.
- △ 0.00381 MIN MATTE TIN PLATE OVER 0.00127 MIN NICKEL.
- △ 0.00076 MIN GOLD PLATE IN THE LOCALIZED GOLD PLATE AREA, 0.00381 MIN MATTE TIN IN THE LOCALIZED TIN PLATE AREA, BOTH OVER 0.00127 MIN NICKEL.



RECOMMENDED MOUNTING HOLE PATTERN FOR 1.57 THICK P.C. BOARD

MM	IN	MM	IN	MM	IN
1.00	.039	6.86	.270	-	-
0.76	.030	6.10	.240	47.12	1.855
0.25	.010	5.99	.236	20.70	.815
0.13	.005	5.33	.210	16.56	.652
0.08	.003	5.08	.200	12.70	.500
0.064	.0025	4.14	.163	12.42	.489
0.05	.002	3.66	.142	12.418	.4889
0.00381	0.000150	3.68	.145	9.80	.386
0.00127	0.000050	1.57	.062	8.28	.326
0.00076	0.000030	1.40	.055	7.34	.289

CONVERSION TABLE

MATERIAL	FINISH	MATERIAL	COLOR	PART NO
BRASS	△ NYLON, UL94V-0	WHITE	1-794107-1	
BRASS	△ NYLON, UL94V-0	WHITE	1-794107-0	
BRASS	GOLD △ NYLON, UL94V-0	WHITE	794107-2	
BRASS	TIN LEAD △ NYLON, UL94V-0	WHITE	794107-1	

DESIGNER	DATE	BY	DATE	BY	DATE

THIS DRAWING IS A CONTROLLED DOCUMENT. **DELTA** Electronics Corporation, Harrisburg, PA 17105-3608

DESCRIPTION: **HEADER ASSEMBLY, RIGHT ANGLE, W/SHORT PEG, 22 CIRCUIT, MINI UNIVERSAL, MATE-N-LOCK(TM)**

DATE: 02/28/03 DRAWING NO: **A100779** (C)=794107

CUSTOMER DRAWING: **DELTA** S:1 I:1 B:1

