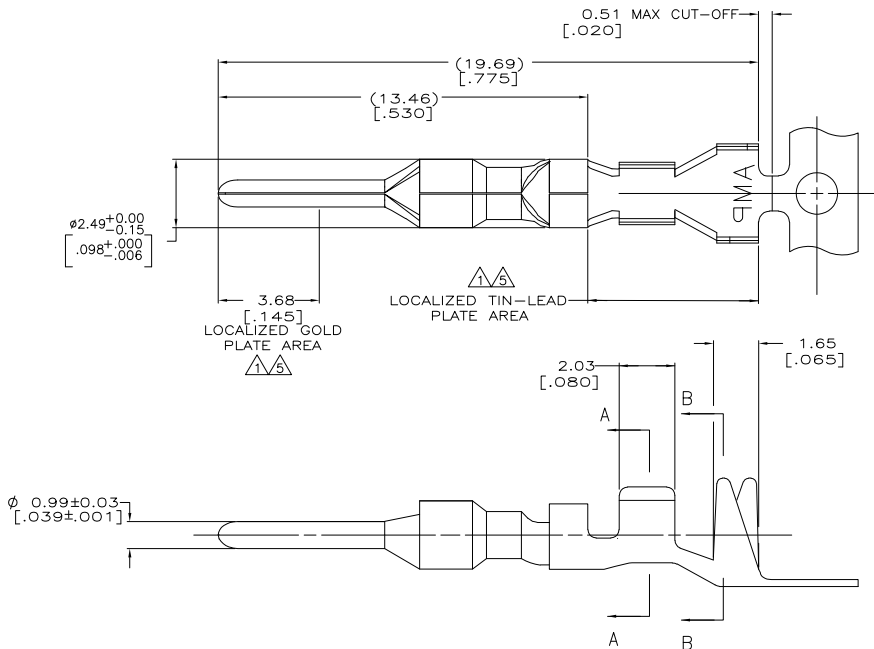
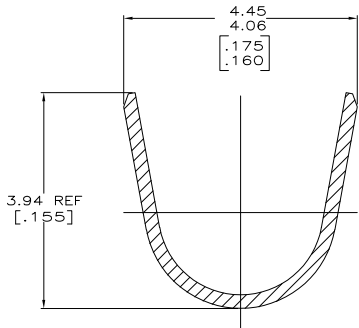
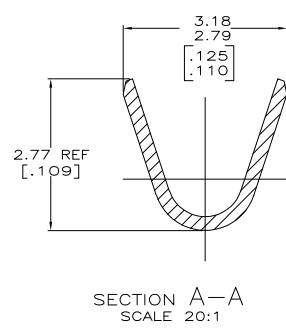


THIS DRAWING IS UNPUBLISHED. RELEASED FOR PUBLICATION. BY TYCO ELECTRONICS CORPORATION. ALL RIGHTS RESERVED.

LOC	DIST	REVISIONS					
CM	0	P	LTR	DESCRIPTION	DATE	MIN	APD
		E		REVISED PER 0638-0237-05	9/20/05	SS	CJ



- 1. 0.00076 [0.00030] MIN GOLD PER AMP SPEC 112-162-3 IN LOCALIZED GOLD PLATE AREA AND 0.00254-0.00635 [0.00100-.000250] BRIGHT TIN-LEAD PER AMP SPEC 112-26-1 IN LOCALIZED TIN-LEAD PLATE AREA OVER 0.00127 [0.00050] MIN NICKEL PER AMP SPEC 112-25-2.
- 2. WIRE RANGE: 0.5-1.4MMR (20-16 AWG).
- 3. INSULATION RANGE: 2.01-3.20[.079-.126].
- 4. DIMENSIONS IN BRACKETS ARE IN INCHES.
- 5. 0.00076 [0.00030] MIN GOLD PER AMP SPEC 112-162-3 IN LOCALIZED GOLD PLATE AREA AND 0.00254-0.00635 [0.00100-.000250] MATTE TIN PER AMP SPEC 112-16-3 IN LOCALIZED TIN PLATE AREA OVER 0.00127 [0.00050] MIN NICKEL PER AMP SPEC 112-25-2.



△	0.25[.010] BRASS	1-794222-0
△	0.25[.010] BRASS	794222-3
PRE-TIN	0.25[.010] BRASS	794222-1
FINISH	MATERIAL	PART NUMBER

THIS DRAWING IS A CONTROLLED DOCUMENT.		REV 2-20-98	Tyco Electronics Corporation	
DIMENSIONS: mm [INCHES]	TO MANUFACTURE TO DIMENSIONS SPECIFIED.	2-20-98	Harrisburg, PA 17105-3608	
0 PLC ±	1 PLC ±	2 PLC ±	3 PLC ±	4 PLC ±
0.15 [0.006]	0.15 [0.006]	0.15 [0.006]	0.15 [0.006]	0.15 [0.006]
ANGLE	ANGLE	ANGLE	ANGLE	ANGLE
FINISH	FINISH	FINISH	FINISH	FINISH
MATERIAL: SEE TABLE	FINISH: SEE TABLE	PRODUCT SPEC: --	APPLICATION SPEC: --	WEIGHT: --
CUSTOMER DRAWING		SIZE: A2	CAGE CODE: 00779	DRAWING NO: C-794222
		SCALE: 10:1	SHEET: 1 of 1	REV: E

AMP 1471-9 REV 31MAR2000

794222