

4

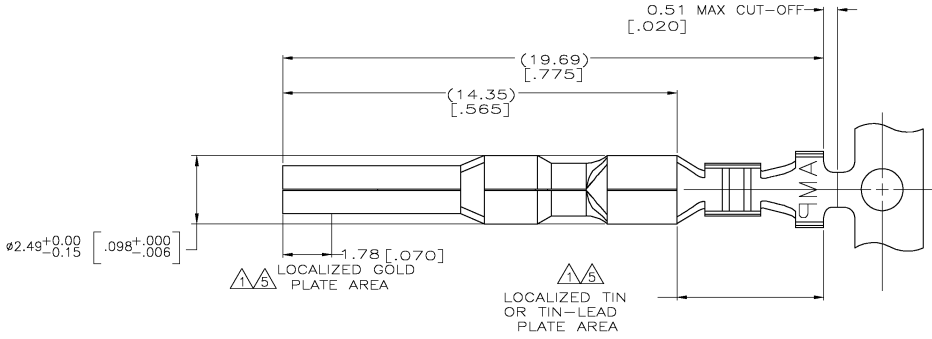
3

2

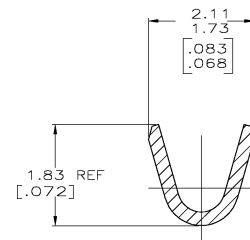
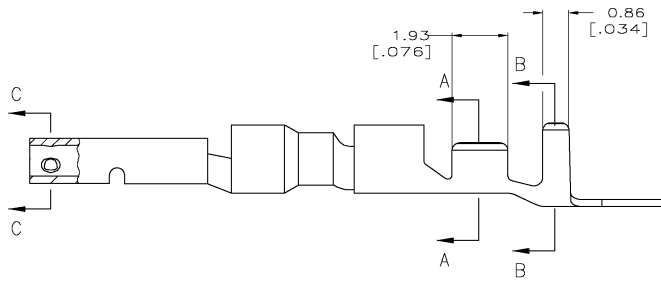
1

THIS DRAWING IS UNPUBLISHED. RELEASED FOR PUBLICATION.  
 © COPYRIGHT BY TYCO ELECTRONICS CORPORATION. ALL RIGHTS RESERVED.

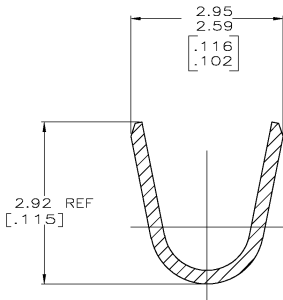
LOC	DIST	REVISIONS					
CM	00	P	LTR	DESCRIPTION	DATE	OWN	APPD
		F		REVISED PER EC 0639-0231-05		DMARDES	KW CJ



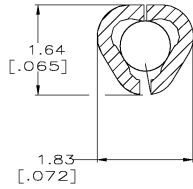
- 1. 0.00076 [0.00030] MIN GOLD IN LOCALIZED GOLD PLATE AREA AND 0.00254 [0.00100] MIN BRIGHT TIN-LEAD IN LOCALIZED TIN-LEAD PLATE AREA OVER 0.0013 [0.00050] MIN NICKEL.
- 2. WIRE RANGE: 0.12 - 0.4MM<sup>2</sup> (26-22 AWG).
- 3. INSULATION RANGE: 1.19-1.75[.047-.069] DIA.
- 4. DIMENSIONS IN BRACKETS ARE IN INCHES.
- 5. 0.00076 [0.00030] MIN GOLD IN LOCALIZED GOLD PLATE AREA AND 0.00254 [0.00100] MIN MATTE TIN IN LOCALIZED TIN PLATE AREA OVER 0.0013 [0.00050] MIN NICKEL.
- 6. ROHS COMPLIANT.



SECTION A-A  
SCALE 20:1



SECTION B-B  
SCALE 20:1



SECTION C-C  
SCALE 20:1

**METRIC**

7	8	0.25[.010] BRASS	1-794219-0
9	10	0.25[.010] BRASS	794219-3
11	12	PRE-TIN	0.25[.010] BRASS
13	14	794219-1	
FINISH		MATERIAL	PART NO

DIMENSIONS:		THIS DRAWING IS A CONTROLLED DOCUMENT:		TYCO ELECTRONICS		Tyco Electronics Corporation	
mm (INCHES)		DRW	K. WHITAKER	Tyco Electronics Corporation		Greensboro, NC 27409	
TOLERANCE UNLESS OTHERWISE SPECIFIED:		CHK	C. JONES	SOCKET,		MINI UNIVERSAL MATE-N-LOK(TM) 2	
0 P.L.C.	±	APPD	C. JONES	RESTRICTED TO		-	
1 P.L.C.	±	PRODUCT SPEC		SEE	CAGE CODE	DRAWING NO	
2 P.L.C.	±	APPLICATION SPEC		A2	00779	794219	
3 P.L.C.	± 0.15 (0.06)	WEIGHT		SCALE		10:1	SHEET 1 OF 1
4 P.L.C.	±	FINISH		CUSTOMER DRAWING			REV F
ANGLES	±						