

4

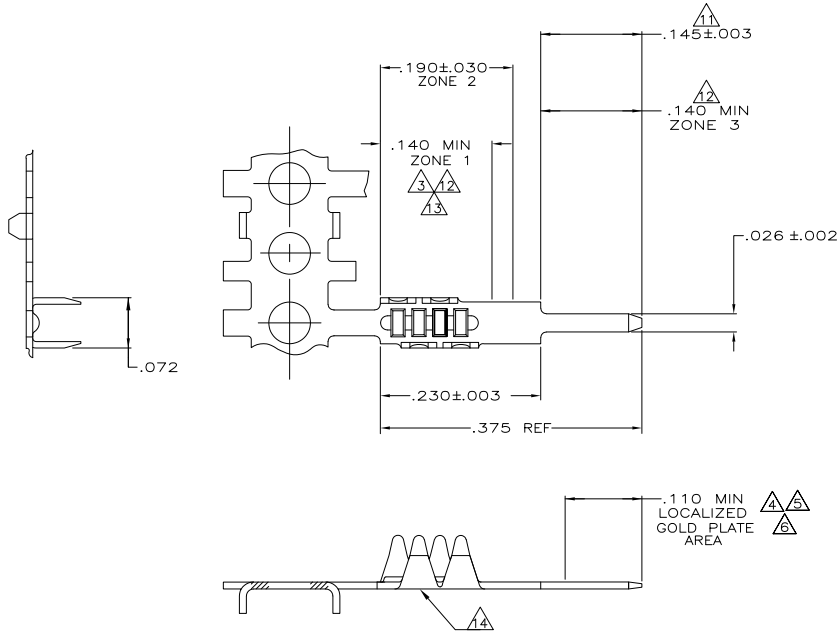
3

2

1

THIS DRAWING IS UNPUBLISHED. RELEASED FOR PUBLICATION
 © COPYRIGHT - By - ALL RIGHTS RESERVED.

LOC	DIST	REVISIONS					
GP	00	P	LTR	DESCRIPTION	DATE	MIN	APD
		W		REVISED PER ECO-11-010490	10JUN2011		CJV/CWR



- △.000050 MIN THK NICKEL UNDERPLATE OVER ENTIRE CONTACT.
- △.000150 MIN BRIGHT TIN/LEAD OVER ENTIRE CONTACT.
- △.000100 MIN THK BRIGHT TIN/LEAD IN ZONE 1.
- △ GOLD FLASH IN LOCALIZED GOLD PLATE AREA.
- △.000015 MIN GOLD IN LOCALIZED GOLD PLATE AREA
- △.000030 MIN GOLD IN LOCALIZED GOLD PLATE AREA
- 7. TO BE APPLIED PER AMP APPLICATION SPEC 114-16015.
- 8. RECOMMENDED HOLE SIZE IS .031-.035 DIA.
- △ FOR SOLDERABILITY SEE AMP PRODUCT SPEC 108-9024.
- △.000150 MIN TIN-LEAD IN ZONE 2.
- △ AREA TO BE UNPLATED (-9 ONLY).
- △ GOLD FLASH IN ZONE 1.
- △.000150 MIN TIN IN ZONE 3.
- △ GOLD FLASH IN ZONE 1.
- △ GOLD PLATING MAY OR MAY NOT BE PRESENT ON THE BOTTOM OF THE CRIMP BARREL.

	△6 △13 △14	1-88997-4
	△5 △13 △14	1-88997-3
	△9 △12 △14	1-88997-2
OBSOLETE	△10 △11	88997-9
	△3 △6	88997-5
	△3 △6	88997-4
SUPERSEDED BY 88997-5	△3 △4	88997-3
	△2 △9	88997-2
	FINISH	PART NO

THIS DRAWING IS A CONTROLLED DOCUMENT.		DR. S. MCMASTER	10MAR04	TE Connectivity	
DIMENSIONS: INCHES		CHK. S. BOLASH	10MAR04	CONTACT, SOLDER TAB, FFC, .100	
TOLERANCES UNLESS OTHERWISE SPECIFIED:		APP. M. WALMSLEY	10MAR04	PRODUCT SPEC 108-9024	
Ø	PLC ± .005	APPLICATION SPEC 114-16015		SIZE	CAGE CODE DRAWING NO
Ø	PLC ± .005	MATERIAL PH: BRONZE .010 THK		A2	00779C-88997
Ø	PLC ± .005	FINISH SEE TABLE		RESTRICTED TO	
Ø	PLC ± .005			CUSTOMER DRAWING	SCALE 10:1 SHEET 1 of 1 REV W