

4

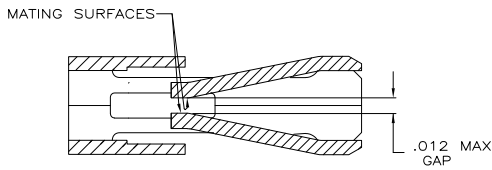
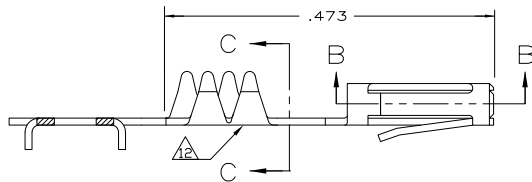
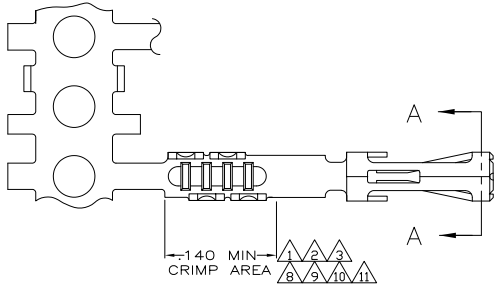
3

2

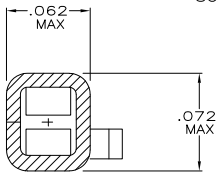
1

THIS DRAWING IS UNPUBLISHED. RELEASED FOR PUBLICATION. ALL RIGHTS RESERVED.

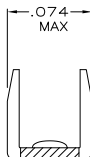
| LOC | DIST | REVISIONS |     |                           |         |    |      |
|-----|------|-----------|-----|---------------------------|---------|----|------|
| GP  | 00   | P         | LTR | DESCRIPTION               | DATE    | BY | APPD |
|     |      | U1        |     | REVISED PER ECO-11-004835 | 11MAR11 | RK | HMR  |



SECTION B-B  
SCALE 20:1



SECTION A-A  
SCALE 20:1



SECTION C-C  
SCALE 20:1

SEE NOTES ON SHEET 2

SUPSD BY 487406-2

|      |            |
|------|------------|
| △ 1  | 2-487406-6 |
| △ 2  | 2-487406-4 |
| △ 3  | 2-487406-3 |
| △ 4  | 2-487406-2 |
| △ 5  | 1-487406-0 |
| △ 6  | 487406-9   |
| △ 7  | 487406-4   |
| △ 8  | 487406-3   |
| △ 9  | 487406-2   |
| △ 10 | 487406-1   |

FINISH PART NUMBER

|   |  |                                |  |  |
|---|--|--------------------------------|--|--|
| THIS DRAWING IS A CONTROLLED DOCUMENT.    |  | DR<br>D. DOLLYHIGH<br>11-10-84 | TE Connectivity                                |  |
| DIMENSIONS:<br>INCHES                     |  | CHK<br>J. COMPTON<br>11-10-84  | RECEPTACLE CONTACT,<br>STANDARD PRESSURE       |  |
| TOLERANCES UNLESS<br>OTHERWISE SPECIFIED: |  | APPD<br>-                      | SIZE CAGE CODE DRAWING NO<br>A2 00779 C=487406 |  |
| 0 PLC ± .005                              |  | PRODUCT SPEC<br>108-9024       | RESTRICTED TO                                  |  |
| 1 PLC ± .005                              |  | APPLICATION SPEC<br>114-16015  | -  |  |
| 2 PLC ± .005                              |  | RIGHT                          | SCALE 10:1 SHEET 1 of 2 REV U1                 |  |
| 3 PLC ± .005                              |  | FINISH                         | CUSTOMER DRAWING                               |  |
| 4. ANGLES ± .5°                           |  | SEE TABLE                      |  |  |
| MATERIAL<br>PHOSPHOR BRONZE               |  |                                |  |  |

4

3

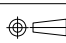
2

1

THIS DRAWING IS UNPUBLISHED. RELEASED FOR PUBLICATION  
 © COPYRIGHT - By - ALL RIGHTS RESERVED.

| LOC | DIST | REVISIONS |     |             |      |     |      |
|-----|------|-----------|-----|-------------|------|-----|------|
| GP  | 00   | P         | LTR | DESCRIPTION | DATE | OWN | APPD |
| -   | -    | -         | -   | SEE SHEET 1 | -    | -   | -    |

- △ PREPLATED WITH NICKEL UNDERPLATE .000050 THK ON ENTIRE CONTACT WITH GOLD .000015 THK ON MATING AREA AND PLATED WITH BRIGHT TIN-LEAD .000100 THK IN CRIMP AREA,  
 -OR-  
 NICKEL .000050 MIN THK UNDERPLATE ON ENTIRE CONTACT, GOLD FLASH OVER PALLADIUM-NICKEL, .000015 MIN TOTAL THK ON MATING SURFACES AND BRIGHT TIN/LEAD .000100 MIN THK IN CRIMP AREA.
- △ PREPLATED WITH NICKEL UNDERPLATE .000050 THK ON ENTIRE CONTACT WITH GOLD .000030 THK ON MATING AREA AND PLATED WITH BRIGHT TIN-LEAD .000100 THK IN CRIMP AREA,  
 -OR-  
 NICKEL .000050 MIN THK UNDERPLATE ON ENTIRE CONTACT, GOLD FLASH OVER PALLADIUM-NICKEL, .000030 MIN TOTAL THK ON MATING AREA AND BRIGHT TIN/LEAD .000100 MIN THK ON CRIMP AREA.
- △ PREPLATED WITH NICKEL UNDERPLATE .000050 THK ON ENTIRE CONTACT WITH GOLD .000050 THK ON MATING AREA AND PLATED WITH BRIGHT TIN-LEAD .000100 THK IN CRIMP AREA,  
 -OR-  
 NICKEL .000050 MIN THK UNDERPLATE ON ENTIRE CONTACT, GOLD FLASH OVER PALLADIUM-NICKEL, .000050 MIN TOTAL THK ON MATING AREA AND BRIGHT TIN/LEAD .000100 MIN THK ON CRIMP AREA.
- △ .000100 BRIGHT TIN-LEAD OVER .000050 PRE-PLATED NICKEL UNDERPLATE ON ENTIRE CONTACT.
- 5. MATING POST LENGTH ACCEPTED:  
 SINGLE ROW HOUSINGS .220-.323  
 DOUBLE ROW HOUSINGS .235-.323
- △ PREPLATED WITH NICKEL UNDERPLATE .000050 THK ON ENTIRE CONTACT WITH GOLD .000050 THK ON MATING AREA AND GOLD FLASH OVER ENTIRE CONTACT,  
 -OR-  
 NICKEL .000050 MIN THK UNDERPLATE ON ENTIRE CONTACT, GOLD FLASH OVER PALLADIUM-NICKEL, .000050 MIN TOTAL THK ON MATING AREA AND GOLD FLASH OVER ENTIRE CONTACT.
- △ PREPLATED WITH NICKEL UNDERPLATE .000050 THK ON ENTIRE CONTACT WITH GOLD .000030 THK ON MATING AREA AND PLATED WITH GOLD .000030 THK ON ENTIRE CONTACT EXCEPT .000003 MIN THK PERMISSIBLE ON INTERIOR OF CONTACT BOX EXCLUSIVE OF MATING AREA.
- △ PREPLATED WITH NICKEL UNDERPLATE .000050 MIN THK ON ENTIRE CONTACT WITH GOLD .000015 MIN THK ON MATING AREA AND PLATED WITH GOLD FLASH IN CRIMP AREA,  
 -OR-  
 NICKEL .000050 MIN THK UNDERPLATE ON ENTIRE CONTACT, GOLD FLASH OVER PALLADIUM-NICKEL, .000015 MIN TOTAL THK ON MATING AREA AND GOLD FLASH IN CRIMP AREA.
- △ PREPLATED WITH NICKEL UNDERPLATE .000050 MIN THK ON ENTIRE CONTACT WITH GOLD .000030 MIN THK ON MATING AREA AND PLATED WITH GOLD FLASH IN CRIMP AREA,  
 -OR-  
 NICKEL .000050 MIN THK UNDERPLATE ON ENTIRE CONTACT, GOLD FLASH OVER PALLADIUM-NICKEL, .000030 MIN TOTAL THK ON MATING AREA AND GOLD FLASH IN CRIMP AREA.
- △ PRE-PLATED WITH NICKEL UNDERPLATE .000050 THICK ON ENTIRE CONTACT WITH GOLD FLASH IN CRIMP AREA AND .000100 MIN TIN ON MATING AREA.
- △ PRE-PLATED WITH NICKEL UNDERPLATE .000050 THICK ON ENTIRE CONTACT WITH GOLD .000050 THICK ON MATING AREA AND PLATED WITH GOLD FLASH IN CRIMP AREA,  
 -OR-  
 NICKEL .000050 MIN THK UNDERPLATE ON ENTIRE CONTACT, GOLD FLASH OVER PALLADIUM-NICKEL, .000050 MIN TOTAL THK ON MATING AREA AND GOLD FLASH IN CRIMP AREA.
- △ GOLD PLATING MAY OR MAY NOT BE PRESENT ON THE BOTTOM OF THE CRIMP BARREL.

|  |  |                                 |  |                         |
|--|--|---------------------------------|--|-------------------------|
| THIS DRAWING IS A CONTROLLED DOCUMENT.   |  | DRN<br>D. DOLLYHIGH<br>11-10-84 | TE Connectivity                          |                         |
| DIMENSIONS:<br>INCHES  |  | CHK<br>J. COMPTON<br>11-10-84   | RECEPTACLE CONTACT,<br>STANDARD PRESSURE |                         |
| TOLERANCES UNLESS OTHERWISE SPECIFIED:   |  | APPD<br>-                       | RESTRICTED TO                            |                         |
|  |  | NAME<br>-                       | -  |                         |
| MATERIAL<br>PHOSPHOR BRONZE  |  | PRODUCT SPEC<br>108-9024        | -  |                         |
| FINISH<br>SEE TABLE  |  | APPLICATION SPEC<br>114-16015   | -  |                         |
|  |  | SIZE<br>A2                      | CAGE CODE<br>00779                       | DRAWING NO.<br>C=487406 |
|  |  | WEIGHT<br>-                     | SCALE<br>10:1                            |                         |
|  |  | CUSTOMER DRAWING                |  | SHEET<br>2 of 2         |
|  |  |                                 |  | REV<br>U1               |

1471-9 (3/11)

487406

A