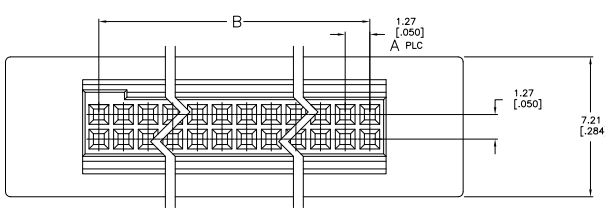
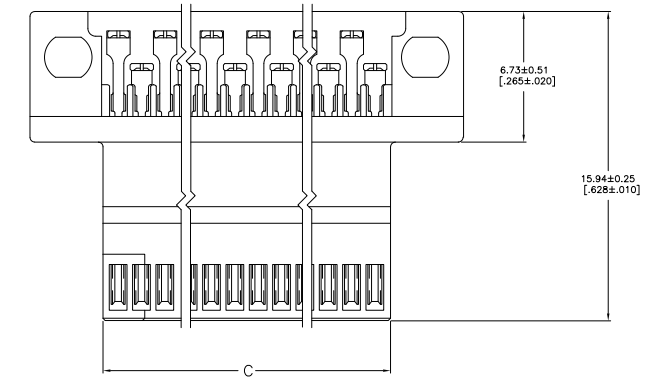
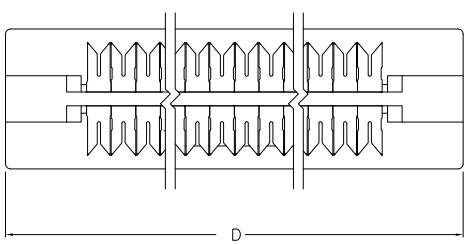
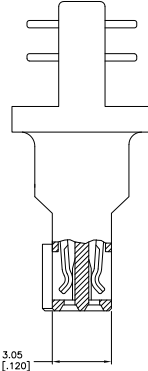


THIS DRAWING IS UNPUBLISHED
 ALL RIGHTS RESERVED

REV	DATE	DESCRIPTION	BY	CHK	APP
AD	00				
H		REVISED PER EDD-11-008183			



- △ MATERIAL:
 RECEPTACLE CONTACTS- PHOSPHOR BRONZE
 RECEPTACLE HOUSING: LCP; BLACK
 TERMINATING COVERS: POLYESTER; BLACK
- △ PLATING:
 RECEPTACLE CONTACTS- 0.00076 [0.00030] MINIMUM GOLD PLATE IN CONTACT AREA,
 0.00127 [0.00050] MINIMUM BRIGHT TIN-LEAD PLATE IN TERMINATION AREA,
 ALL OVER 0.00127 [0.00050] MINIMUM NICKEL
- 3. RECOMMENDED WIRE:
 28 AWG- 0.91 [0.36] MAX O.D. PVC OR POLYETHYLENE INSULATION.
- 4. SHORT-LONG CONTACT SEQUENCE MUST ALTERNATE BUT MAY BEGIN WITH EITHER
 A SHORT OR LONG CONTACT.
- △ OBSOLETE PART NUMBER.
- △ PLATING:
 RECEPTACLE CONTACTS- 0.00076 [0.00030] MINIMUM GOLD PLATE IN CONTACT AREA,
 0.00127 [0.00050] MINIMUM TIN-LEAD PLATE IN TERMINATION AREA,
 ALL OVER 0.00127 [0.00050] MINIMUM NICKEL.
- 7. TERMINATION COVERS MUST BE ORDERED SEPARATELY.
- △ ROHS 2002/95/EC COMPLIANT.
- △ OBSOLETE PARTS: OBSOLETE CIS STREAMLINING PER D.RENAUD/D.SINISI



REV	DATE	DESCRIPTION	BY	CHK	APP
9		OBSOLETE			
△					
9		OBSOLETE			
△					

FINISH	D	C	B	A	NO. OF POSN	PART NO
	71.83 [2.828]	63.91 [2.516]	62.23 [2.450]	49	100	6-104893-0
	65.48 [2.578]	57.56 [2.266]	49.58 [1.950]	44	90	5-104893-9
	59.13 [2.328]	51.21 [2.016]	49.53 [1.950]	39	80	5-104893-8
	52.78 [2.078]	44.86 [1.766]	43.18 [1.700]	34	70	5-104893-7
	46.43 [1.828]	38.51 [1.516]	36.83 [1.450]	29	60	5-104893-6
	40.08 [1.578]	32.16 [1.266]	30.48 [1.200]	24	50	5-104893-5
	33.73 [1.328]	25.81 [1.016]	24.13 [0.950]	19	40	5-104893-4
	27.38 [1.078]	19.46 [.766]	17.78 [.700]	14	30	5-104893-3
	21.03 [.828]	13.11 [.516]	11.43 [.450]	9	20	5-104893-2
	14.68 [.578]	6.76 [.266]	5.08 [.200]	4	10	5-104893-1
	76.95 [3.030]	43.59 [1.716]	41.91 [1.650]	33	68	1-104893-1
	71.83 [2.828]	63.91 [2.516]	62.23 [2.450]	49	100	1-104893-0
	65.48 [2.578]	57.56 [2.266]	49.58 [1.950]	44	90	1-104893-9
	59.13 [2.328]	51.21 [2.016]	49.53 [1.950]	39	80	1-104893-8
	52.78 [2.078]	44.86 [1.766]	43.18 [1.700]	34	70	1-104893-7
	46.43 [1.828]	38.51 [1.516]	36.83 [1.450]	29	60	1-104893-6
	40.08 [1.578]	32.16 [1.266]	30.48 [1.200]	24	50	1-104893-5
	33.73 [1.328]	25.81 [1.016]	24.13 [0.950]	19	40	1-104893-4
	27.38 [1.078]	19.46 [.766]	17.78 [.700]	14	30	1-104893-3
	21.03 [.828]	13.11 [.516]	11.43 [.450]	9	20	1-104893-2
	14.68 [.578]	6.76 [.266]	5.08 [.200]	4	10	1-104893-1

THIS DRAWING IS A CONTROLLED DOCUMENT. IF REVISIONS 17(4-B)

INCHES	MM	DECIMAL	FRAC	DATE
108-1443				
114-7010				

TE Connectivity
 AMPMODU
 50/50 GRID CABLE CONN. ASSY

DATE: 10-11-01
 DRAWING NO: 100779
 PART NO: 104893