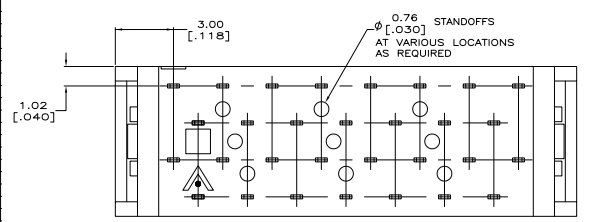
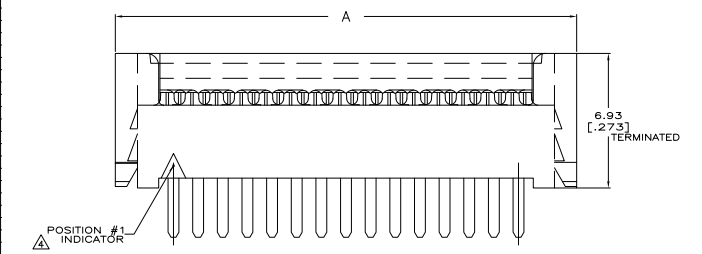
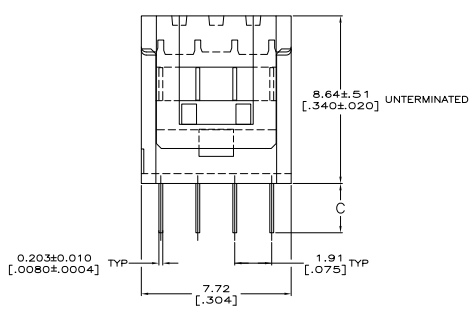
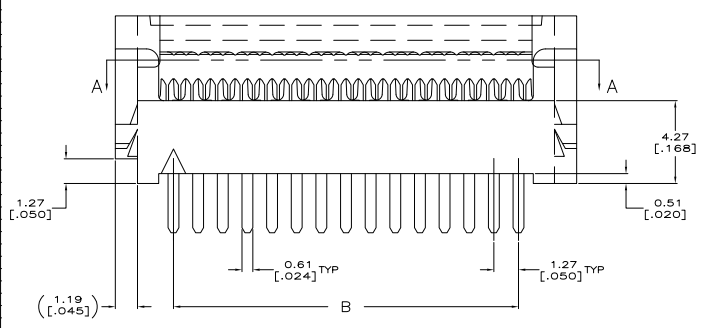


THIS DRAWING IS UNPUBLISHED  
 ALL RIGHTS RESERVED

REV	DATE	DESCRIPTION	BY	CHK	APP
00					
D1		REVISED PER EDD-11-004835			



- △ HOUSING: UL RATED 94V-0 LCP THERMOPLASTIC, COLOR BLACK.
- △ COVER: UL RATED 94V-0 POLYESTER MOLDING COMPOUND, COLOR BLACK.
- △ CONTACTS: COPPER ALLOY.
- △ CONTACTS: 0.00254 [0.00100] MIN MATTE TIN OVER 0.00127 [0.00050] MIN NICKEL.
- △ POSITION 1 INDICATOR, OMITTED FOR PART NUMBER 2-5111595-1.
- △ VOID CORES MAY OR MAY NOT BE PRESENT BETWEEN ANY 2 ROWS OF CONTACTS.

#2	3.30	49.53	55.52	80	2-5111595-2	△
#2	2.54	41.91	47.90	68	2-5111595-1	
#2	2.54	18.51	22.90	28	2-5111595-0	
#2	2.54	41.91	47.90	68	1-5111595-9	
#1	2.54	27.94	33.93	46	1-5111595-7	
#2	2.54	62.23	68.22	100	1-5111595-6	
#2	2.54	49.53	55.52	80	1-5111595-5	
#2	2.54	44.45	50.44	72	1-5111595-4	
#2	2.54	39.37	45.36	64	1-5111595-3	
#2	2.54	36.83	42.82	60	1-5111595-2	
#1	2.54	30.48	36.47	50	1-5111595-1	
#2	2.54	24.15	30.12	44	1-5111595-0	
#2	2.54	24.15	30.12	40	5111595-9	
#1	2.54	20.32	26.31	34	5111595-8	
#1	2.54	17.78	23.77	30	5111595-7	
#1	2.54	15.24	21.23	26	5111595-6	
#2	2.54	13.97	19.96	24	5111595-5	
#2	2.54	11.43	17.42	20	5111595-4	
#2	2.54	8.89	14.88	16	5111595-3	
#1	2.54	7.62	13.61	14	5111595-2	
#1	2.54	5.08	11.07	10	5111595-1	

THIS DRAWING IS A CONTROLLED DOCUMENT

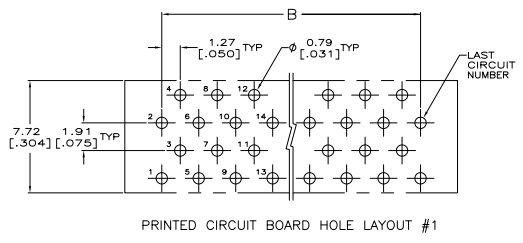
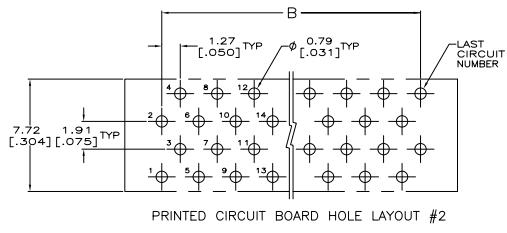
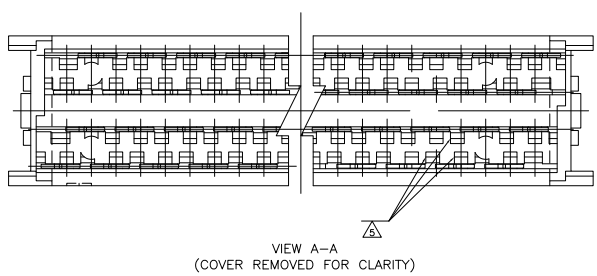
DESIGNER	DATE	REVISED BY	DATE
108-1109	11-28-97		

TE Connectivity  
 AMPMODU SYSTEM 50, CONNECTOR, PACKAGED

114-25040  
 100779 (C) 5111595

CUSTOMER DRAWING

REV	DATE	DESCRIPTION	BY	APP'D
1		SEE SHEET 1		



THIS DRAWING IS A CONTROLLED DOCUMENT.		REV. ATTACHA	SHOWN	<b>TE</b> TE Connectivity
DRAWING NO. 000779		REV. B000E	SHOWN	
DESIGNED BY M. WILMSLEY		REV. M. WILMSLEY	SHOWN	AMP400U SYSTEM 50, CONNECTOR, PADDLEBOARD
CHECKED BY		REV.	SHOWN	DATE 10-11-95
DRAWN BY		REV.	SHOWN	DATE 10-11-95
APPROVED BY		REV.	SHOWN	DATE 10-11-95
CUSTOMER DRAWING				DATE 10-11-95 SHEET 2 OF 2