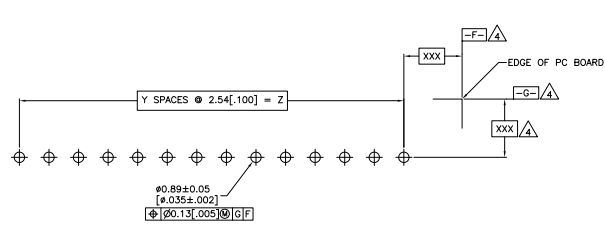
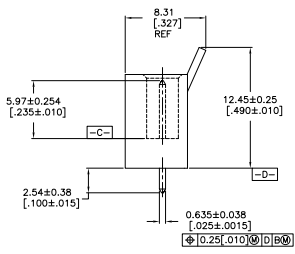
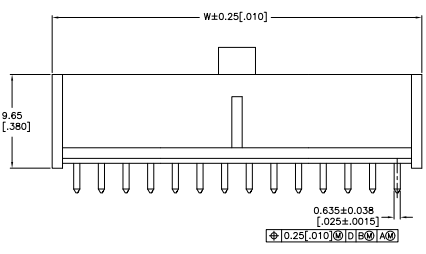
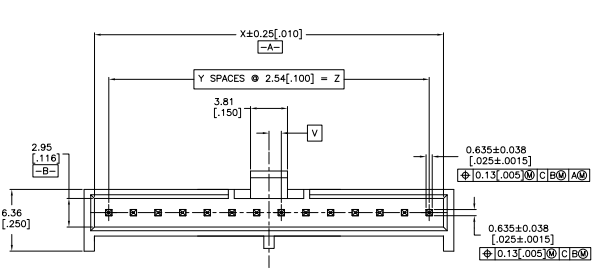


THIS DRAWING IS UNPUBLISHED  
 RECEIVED FOR INFORMATION  
 © 2008 BY TTI ELECTRONICS CORPORATION ALL RIGHTS RESERVED

REV	DATE	DESCRIPTION	BY	CHK	APP
GP 00					
B		REVISED FOR ECO-08-023116	OFFEROR	BM	DG



RECOMMENDED PC BOARD LAYOUT  
 1.57 [0.62] PC BOARD  
 VIEWED FROM CONNECTOR SIDE

- MATERIAL:  
 HOUSING: NYLON, 94V-0 RATED, COLOR: BLUE.  
 CONTACTS: PHOSPHOR BRONZE.
- FINISH:  
 CONTACTS: 0.76μm [0.00030] MIN GOLD IN CONTACT AREA, .00254 [0.00100] MIN TIN ON SOLDER POST, ALL OVER 0.00127 [0.00050] MIN NICKEL.
- FINISH:  
 CONTACTS: 0.00254 [0.00100] MIN TIN OVER 0.00127 [0.00050] MIN NICKEL.
- DATUMS AND BASIC DIMENSIONS TO BE ESTABLISHED BY THE CUSTOMER.

FINISH	DIM Z	DIM Y	DIM X	DIM W	DIM V	NUMBER OF POSITIONS	PART NUMBER
△	55.88 [2.200]	22	58.83 [2.316]	60.96 [2.400]	0.00 [0.000]	23	4-1888291-0
△	55.88 [2.200]	22	58.83 [2.316]	60.96 [2.400]	0.00 [0.000]	23	3-1888291-9
△	53.34 [2.100]	21	56.29 [2.216]	58.42 [2.300]	1.27 [0.050]	22	3-1888291-8
△	53.34 [2.100]	21	56.29 [2.216]	58.42 [2.300]	1.27 [0.050]	22	3-1888291-7
△	50.80 [2.000]	20	53.75 [2.116]	55.88 [2.200]	0.00 [0.000]	21	3-1888291-6
△	50.80 [2.000]	20	53.75 [2.116]	55.88 [2.200]	0.00 [0.000]	21	3-1888291-5
△	48.26 [1.900]	19	51.21 [2.016]	53.34 [2.100]	1.27 [0.050]	20	3-1888291-4
△	48.26 [1.900]	19	51.21 [2.016]	53.34 [2.100]	1.27 [0.050]	20	3-1888291-3
△	45.72 [1.800]	18	48.67 [1.916]	50.80 [2.000]	0.00 [0.000]	19	3-1888291-2
△	45.72 [1.800]	18	48.67 [1.916]	50.80 [2.000]	0.00 [0.000]	19	3-1888291-1
△	43.18 [1.700]	17	46.13 [1.816]	48.26 [1.900]	1.27 [0.050]	18	3-1888291-0
△	43.18 [1.700]	17	46.13 [1.816]	48.26 [1.900]	1.27 [0.050]	18	2-1888291-9
△	40.64 [1.600]	16	43.59 [1.716]	45.72 [1.800]	0.00 [0.000]	17	2-1888291-8
△	40.64 [1.600]	16	43.59 [1.716]	45.72 [1.800]	0.00 [0.000]	17	2-1888291-7
△	38.10 [1.500]	15	41.05 [1.616]	43.18 [1.700]	1.27 [0.050]	16	2-1888291-6
△	38.10 [1.500]	15	41.05 [1.616]	43.18 [1.700]	1.27 [0.050]	16	2-1888291-5
△	35.56 [1.400]	14	38.51 [1.516]	40.64 [1.600]	0.00 [0.000]	15	2-1888291-4
△	35.56 [1.400]	14	38.51 [1.516]	40.64 [1.600]	0.00 [0.000]	15	2-1888291-3
△	33.02 [1.300]	13	35.97 [1.416]	38.10 [1.500]	1.27 [0.050]	14	2-1888291-2
△	33.02 [1.300]	13	35.97 [1.416]	38.10 [1.500]	1.27 [0.050]	14	2-1888291-1
△	30.48 [1.200]	12	33.43 [1.316]	35.56 [1.400]	0.00 [0.000]	13	2-1888291-0
△	30.48 [1.200]	12	33.43 [1.316]	35.56 [1.400]	0.00 [0.000]	13	1-1888291-9
△	27.94 [1.100]	11	30.89 [1.216]	33.02 [1.300]	1.27 [0.050]	12	1-1888291-8
△	27.94 [1.100]	11	30.89 [1.216]	33.02 [1.300]	1.27 [0.050]	12	1-1888291-7
△	25.40 [1.000]	10	28.35 [1.116]	30.48 [1.200]	0.00 [0.000]	11	1-1888291-6
△	25.40 [1.000]	10	28.35 [1.116]	30.48 [1.200]	0.00 [0.000]	11	1-1888291-5
△	22.86 [0.900]	9	25.81 [1.016]	27.94 [1.100]	1.27 [0.050]	10	1-1888291-4
△	22.86 [0.900]	9	25.81 [1.016]	27.94 [1.100]	1.27 [0.050]	10	1-1888291-3
△	20.32 [0.800]	8	23.27 [0.916]	25.40 [1.000]	0.00 [0.000]	9	1-1888291-2
△	20.32 [0.800]	8	23.27 [0.916]	25.40 [1.000]	0.00 [0.000]	9	1-1888291-1
△	17.78 [0.700]	7	20.73 [0.816]	22.86 [0.900]	1.27 [0.050]	8	1-1888291-0
△	17.78 [0.700]	7	20.73 [0.816]	22.86 [0.900]	1.27 [0.050]	8	1888291-9
△	15.24 [0.600]	6	18.19 [0.716]	20.32 [0.800]	0.00 [0.000]	7	1888291-8
△	15.24 [0.600]	6	18.19 [0.716]	20.32 [0.800]	0.00 [0.000]	7	1888291-7
△	12.70 [0.500]	5	15.65 [0.616]	17.78 [0.700]	1.27 [0.050]	6	1888291-6
△	12.70 [0.500]	5	15.65 [0.616]	17.78 [0.700]	1.27 [0.050]	6	1888291-5
△	10.16 [0.400]	4	13.11 [0.516]	15.24 [0.600]	0.00 [0.000]	5	1888291-4
△	10.16 [0.400]	4	13.11 [0.516]	15.24 [0.600]	0.00 [0.000]	5	1888291-3
△	7.62 [0.300]	3	10.57 [0.416]	12.70 [0.500]	1.27 [0.050]	4	1888291-2
△	7.62 [0.300]	3	10.57 [0.416]	12.70 [0.500]	1.27 [0.050]	4	1888291-1

THIS DRAWING IS A CONTROLLED DOCUMENT. IT IS THE PROPERTY OF TTI ELECTRONICS CORPORATION. IT IS TO BE KEPT IN CONFIDENCE AND NOT TO BE REPRODUCED OR TRANSMITTED IN ANY FORM OR BY ANY MEANS, ELECTRONIC OR MECHANICAL, INCLUDING PHOTOCOPYING, RECORDING, OR BY ANY INFORMATION STORAGE AND RETRIEVAL SYSTEM.

DATE: 08/11/08  
 DRAWING NO: 100779  
 REV: 0  
 PART NUMBER: 1888291

THIS DRAWING IS A CUSTOMER DRAWING.

THIS DRAWING IS UNPUBLISHED AND NOT BE LOANED, REPRODUCED, COPIED, OR TRANSMITTED IN ANY MANNER WITHOUT THE WRITTEN PERMISSION OF THE COMPANY. ALL RIGHTS RESERVED.

REV	DATE	BY	DESCRIPTION	DATE	BY	APP
GP	00					

△	99.06[3.900]	39	102.01[4.016]	104.14[4.100]	1.27[.050]	40	7-1888291-4
△	99.06[3.900]	39	102.01[4.016]	104.14[4.100]	1.27[.050]	40	7-1888291-3
△	96.52[3.800]	38	99.47[3.916]	101.60[4.000]	0.00[.000]	39	7-1888291-2
△	96.52[3.800]	38	99.47[3.916]	101.60[4.000]	0.00[.000]	39	7-1888291-1
△	93.98[3.700]	37	96.93[3.816]	99.08[3.900]	1.27[.050]	38	7-1888291-0
△	93.98[3.700]	37	96.93[3.816]	99.08[3.900]	1.27[.050]	38	6-1888291-9
△	91.44[3.600]	36	94.39[3.716]	96.52[3.800]	0.00[.000]	37	6-1888291-8
△	91.44[3.600]	36	94.39[3.716]	96.52[3.800]	0.00[.000]	37	6-1888291-7
△	88.90[3.500]	35	91.85[3.616]	93.98[3.700]	1.27[.050]	36	6-1888291-6
△	88.90[3.500]	35	91.85[3.616]	93.98[3.700]	1.27[.050]	36	6-1888291-5
△	86.36[3.400]	34	89.31[3.516]	91.44[3.600]	0.00[.000]	35	6-1888291-4
△	86.36[3.400]	34	89.31[3.516]	91.44[3.600]	0.00[.000]	35	6-1888291-3
△	83.82[3.300]	33	86.77[3.416]	88.90[3.500]	1.27[.050]	34	6-1888291-2
△	83.82[3.300]	33	86.77[3.416]	88.90[3.500]	1.27[.050]	34	6-1888291-1
△	81.28[3.200]	32	84.23[3.316]	86.36[3.400]	0.00[.000]	33	6-1888291-0
△	81.28[3.200]	32	84.23[3.316]	86.36[3.400]	0.00[.000]	33	5-1888291-9
△	78.74[3.100]	31	81.69[3.216]	83.82[3.300]	1.27[.050]	32	5-1888291-8
△	78.74[3.100]	31	81.69[3.216]	83.82[3.300]	1.27[.050]	32	5-1888291-7
△	76.20[3.000]	30	79.15[3.116]	81.28[3.200]	0.00[.000]	31	5-1888291-6
△	76.20[3.000]	30	79.15[3.116]	81.28[3.200]	0.00[.000]	31	5-1888291-5
△	73.66[2.900]	29	76.61[3.016]	78.74[3.100]	1.27[.050]	30	5-1888291-4
△	73.66[2.900]	29	76.61[3.016]	78.74[3.100]	1.27[.050]	30	5-1888291-3
△	71.12[2.800]	28	74.07[2.916]	76.20[3.000]	0.00[.000]	29	5-1888291-2
△	71.12[2.800]	28	74.07[2.916]	76.20[3.000]	0.00[.000]	29	5-1888291-1
△	68.58[2.700]	27	71.53[2.816]	73.66[2.900]	1.27[.050]	28	5-1888291-0
△	68.58[2.700]	27	71.53[2.816]	73.66[2.900]	1.27[.050]	28	4-1888291-9
△	66.04[2.600]	26	68.99[2.716]	71.12[2.800]	0.00[.000]	27	4-1888291-8
△	66.04[2.600]	26	68.99[2.716]	71.12[2.800]	0.00[.000]	27	4-1888291-7
△	63.50[2.500]	25	66.45[2.616]	68.58[2.700]	1.27[.050]	26	4-1888291-6
△	63.50[2.500]	25	66.45[2.616]	68.58[2.700]	1.27[.050]	26	4-1888291-5
△	60.96[2.400]	24	63.91[2.516]	66.04[2.600]	0.00[.000]	25	4-1888291-4
△	60.96[2.400]	24	63.91[2.516]	66.04[2.600]	0.00[.000]	25	4-1888291-3
△	58.42[2.300]	23	61.37[2.416]	63.50[2.500]	1.27[.050]	24	4-1888291-2
△	58.42[2.300]	23	61.37[2.416]	63.50[2.500]	1.27[.050]	24	4-1888291-1

DIM Z	DIM Y	DIM X	DIM W	DIM V	NUMBER OF POSITIONS	PART NUMBER
FINISH						

THIS DRAWING IS A CONTROLLED DOCUMENT. ALL INFORMATION IS UNCLASSIFIED EXCEPT WHERE SHOWN OTHERWISE.

UNCLASSIFIED  
 CONTROLLED  
 CONFIDENTIAL  
 SECRET

DATE: 00779  
 DRAWING NO: 1888291  
 REV: 2

DESCRIPTION: HEADER ASSY, VERTICAL, SINGLE ROW, FLEXPAC

CUSTOMER DRAWING