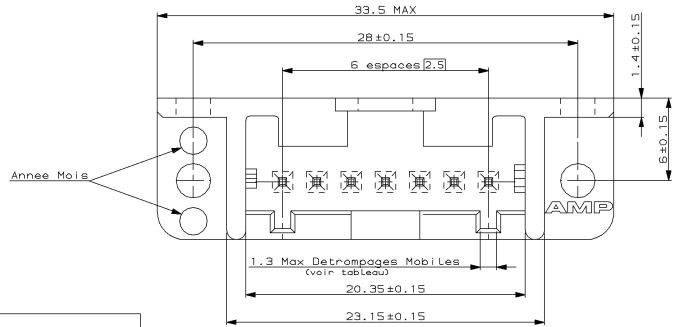
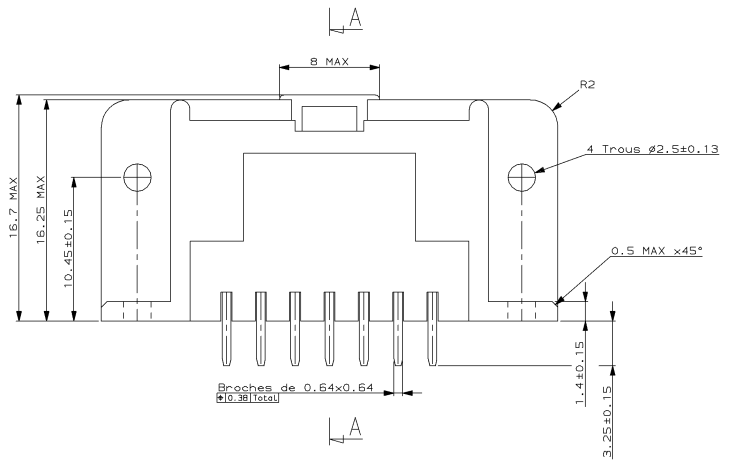
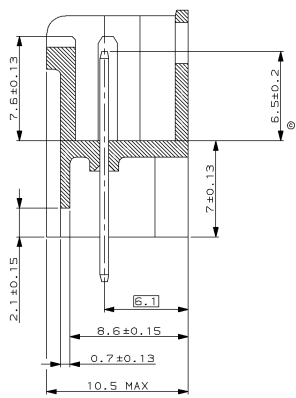


THIS DRAWING IS UNPUBLISHED. OUTSIDE DISSEMINATION AND REPRODUCTION IS PROHIBITED. ALL RIGHTS RESERVED. © COPYRIGHT 1983 BY AMP INCORPORATED. TOUTS DROITS RESERVES.

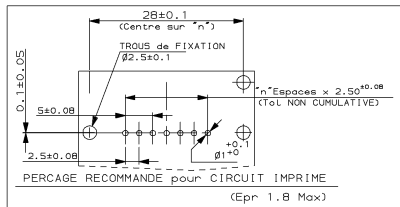
LAC		REV		REVISIONS		
F	7	P	LTR	DESCRIPTION	DATE	APP
		C	REV	MODIFICATIONS	06-FEV-95	MP

COUPE A-A



Matiere: Polyamide 6/6 charge billes de verre  
 Bronze phosphoreux etame

REF	AMP	COULEUR	DETR	Q98
142785-5	GRIS	2.1		
142785-1	NOIR	1.1		



<p>THIS DRAWING IS UNPUBLISHED. OUTSIDE DISSEMINATION AND REPRODUCTION IS PROHIBITED. ALL RIGHTS RESERVED. © COPYRIGHT 1983 BY AMP INCORPORATED. TOUTS DROITS RESERVES.</p>	<p>DATE/DESIGNER 15-JAN-95                  M. JON / JONIC                  24/4/95/15                  26-MAR-95</p>	<p><b>AMP</b>                  AMP DE FRANCE                  95301 PONTOISE</p>
<p>DIMENSIONS: mm</p>	<p>TOLERANCES UNITS: DIMENSIONS SPECIFIED: MILLIMETRES AND DECIMALS (UNLESS OTHERWISE SPECIFIED)</p>	<p>NAME: M.T.I.S (7 POS)                  TITLE:</p>
<p>MATERIAL: VOIR NOTE</p>	<p>FINISH: e5+</p>	<p>SIZE: A2                  CASE CODE: 00779                  DRAWING NO: 142746</p>
<p>WEIGHT: MASSE APPROX. -</p>	<p>APPLICATION SPEC: SPEC. APPLICATION</p>	<p>ENVIRONMENT: POUR REFERENCE                  BOULE: ECHELLE 5:1                  SHEET OF: 1 DE 1                  REV: C</p>