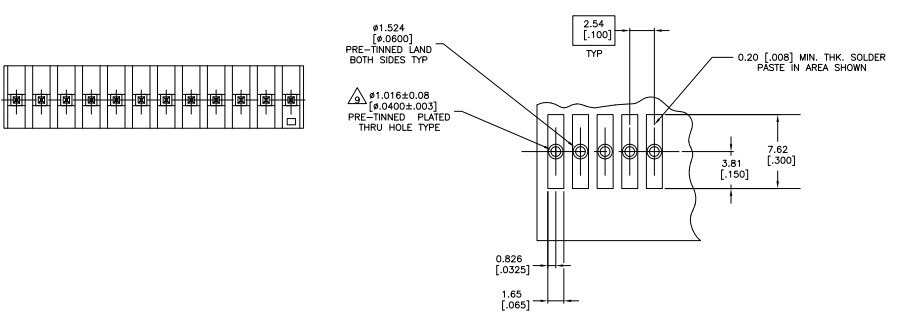
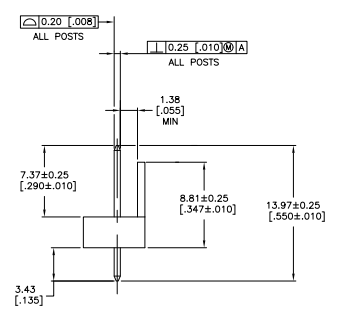
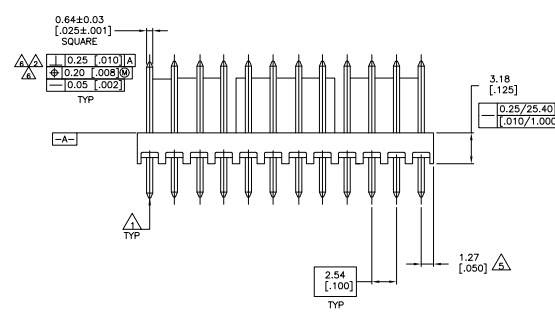
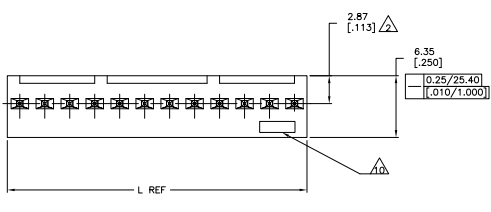


THIS DRAWING IS UNPUBLISHED  
UNLESS NOTED OTHERWISE  
© 1999 METRIC INC.

REV	DATE	DESCRIPTION	BY	CHK
CM 00				
M		REVISED PER EDD-11-021838	DMOV11	KH SM



RECOMMENDED MOUNTING HOLE PATTERN FOR 1.57±0.20 [0.062±0.008] THICK P.C. BOARD

- △ POST TO WITHSTAND 13 NEWTONS (3 LBS) MIN. AXIAL FORCE IN DIRECTION SHOWN WITHOUT DISLODGING.
- △ MEASURED AT SURFACE [-A-].
- 3. PARTS COMPLY WITH AMP SOLDERABILITY SPEC. NO. 109-11-2.
- △ HOUSING; NYLON 4/6, HIGH TEMP. BLACK  
POST -2 THRU -18: COPPER ALLOY, TIN-LEAD (93/7) PLATING  
POST -32 THRU -48: COPPER ALLOY TIN PLATE
- △ COORDINATE DIMENSION APPLIES FROM CENTER OF ACTUAL FEATURE.
- △ POSTS TO BE MEASURED WHEN STRIP IS HELD FLAT.
- 7. DIMENSIONS IN BRACKETS ARE IN INCHES.
- △ TOLERANCES APPLY TO SOLDER SIDE OF BOARD.
- △ ONE HOLE MAY BE UNDERSIZED 0.81 - 0.89 [0.32 - .035] DIAMETER FOR ASSEMBLY RETENTION DURING PROCESSING.
- △ TE LOGO AND UL AND CSA TRADEMARKS TO APPEAR ON THIS SURFACE.
- △ OBSOLETE PARTS: OBSOLETE CIS STREAMLINING PER D.RENAUD/D.SINISI

10.16	.400	12.70	.500	30.48	1.200	12	4-647047-2
		10.16	.400	27.94	1.100	11	4-647047-1
		7.62	.300	25.40	1.000	10	4-647047-0
		5.08	.200	22.86	.900	9	3-647047-9
		2.54	.100	20.32	.800	8	3-647047-8
				17.78	.700	7	3-647047-7
				15.24	.600	6	3-647047-6
				12.70	.500	5	3-647047-5
				10.16	.400	4	3-647047-4
				7.62	.300	3	3-647047-3
				5.08	.200	2	3-647047-2

△ SUPERSEDED BY: 10.16 .400 12.70 .500 30.48 1.200 12	4-647047-2
△ BY: 10.16 .400 27.94 1.100 11	4-647047-1
△ BY: 7.62 .300 25.40 1.000 10	4-647047-0
△ BY: 5.08 .200 22.86 .900 9	3-647047-9
△ BY: 2.54 .100 20.32 .800 8	3-647047-8
△ BY: 17.78 .700 7	3-647047-7
△ BY: 15.24 .600 6	3-647047-6
△ BY: 12.70 .500 5	3-647047-5
△ BY: 10.16 .400 4	3-647047-4
△ BY: 7.62 .300 3	3-647047-3
△ BY: 5.08 .200 2	3-647047-2

M M		I N		M M		I N		M M		I N	
NO. OF POSITIONS											
PART NUMBER											
THIS DRAWING IS A CONTROLLED DOCUMENT. CONTROLLED BY: J. BOSSER. DRAWN BY: J. BOSSER. DATE: 06/01/99. REVISED PER EDD-11-021838.											
DRAWING: MTA-100				HEADERS ASSEMBLY, HIGH TEMPERATURE, POLARIZED, STRAIGHT .025 SQUARE POST, TIN OR TIN LEAD PLATED				REVISED TO: 647047-2			
SIZE: A1		DATE: 06/01/99		DRAWING NO: 647047		SHEET: 5		REVISED TO: 647047-2		PART NUMBER	

