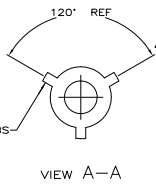
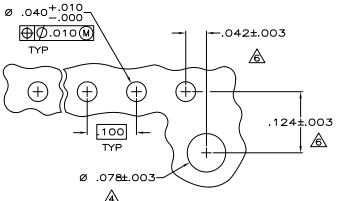
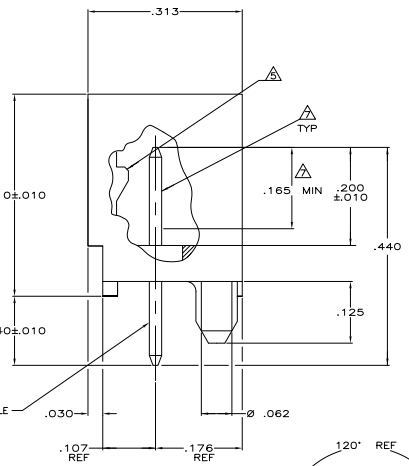
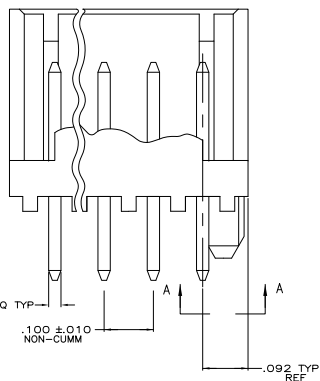
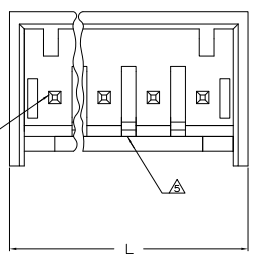


THIS DRAWING IS UNPUBLISHED
 ALL RIGHTS RESERVED

REV	DATE	DESCRIPTION	BY	CHK
CM 00				
H		REVISED PER EDD-11-614383	130CT11	KH SM



	.010	0.25	.107	2.72	.440	11.18
.005	0.13	.100	2.54	.410	10.41	
.003	0.08	.092	2.34	.313	7.95	
.001	0.03	.078	1.98	.200	5.08	
.000350	0.00889	.063	1.6	.176	4.47	
.000150	0.00381	.042	1.07	.165	4.19	
.000050	0.00127	.040	1.02	.140	3.56	
.000030	0.00076	.030	0.76	.125	3.18	
.000	0	.025	0.64	.124	3.15	
	MM	IN	MM	IN	MM	

CONVERSION TABLE

- △ MATERIAL: HEADER-- POLYESTER UL94V-0 (BLACK)
POST-- COPPER ALLOY.
- △ SOLDER SIDE OF P.C. BOARD SHOWN.
- 3 PARTS COMPLY WITH AMP SOLDERABILITY SPEC 109-11-2.
- △ THE RETENTION TABS PROVIDE A ONE-TIME INTERFERENCE FIT IN THE .078 DIAMETER BOARD HOLE FOR HEADER ASSEMBLY RETENTION DURING SOLDERING.
- △ LATCH DETENT FEATURE OCCURS 2 PLACES ON EACH END (MAXIMUM OF FOUR PER PART), FOR 2 THRU 5 CIRCUIT HEADERS, LATCH FEATURE OCCURS BETWEEN EACH CIRCUIT.
- △ COORDINATE DIMENSION APPLIES FROM CENTER OF ACTUAL FEATURE.
- △ PLATING: GOLD PLATE AREA, .00030 GOLD OR .000003 MIN GOLD FLASH OVER .00027 PALLADIUM NICKEL, PER TE CONNECTIVITY'S DISCRETION, ALL SIDES, OVER NICKEL UNDERPLATE, .00050 MIN, ALL SIDES AND ENTIRE LENGTH OF POST.
- △ TIN-LEAD (93/7) PLATE, .000150-.000350 THK, ALL FOUR SIDES, .140 REF.
- 9 UL RECOGNIZED (UR) LOGO AND CSA LOGO WILL APPEAR ON THE SIDE OR ON BOTTOM OF PART.
- △ BRIGHT TIN PLATE .000150-.000350 THICK, ALL FOUR SIDES, .140 REF.
- △ OBSOLETE PARTS: OBSOLETE CIS STREAMLINED PER D.RENAUD/D.SINISI

REV	DATE	DESCRIPTION	BY	CHK
1.484	37.69	14	3-644487-4	
1.384	35.15	13	3-644487-3	
1.284	32.61	12	3-644487-2	
1.184	30.07	11	3-644487-1	
1.084	27.53	10	3-644487-0	
.984	24.99	9	2-644487-9	
.884	22.45	8	2-644487-8	
.784	19.91	7	2-644487-7	
.684	17.37	6	2-644487-6	
.584	14.83	5	2-644487-5	
.484	12.29	4	2-644487-4	
.384	9.75	3	2-644487-3	
.284	7.21	2	2-644487-2	

REV	DATE	DESCRIPTION	BY	CHK
1.484	37.69	14	1-644487-4	
1.384	35.15	13	1-644487-3	
1.284	32.61	12	1-644487-2	
1.184	30.07	11	1-644487-1	
1.084	27.53	10	1-644487-0	
.984	24.99	9	644487-9	
.884	22.45	8	644487-8	
.784	19.91	7	644487-7	
.684	17.37	6	644487-6	
.584	14.83	5	644487-5	
.484	12.29	4	644487-4	
.384	9.75	3	644487-3	
.284	7.21	2	644487-2	

THIS DRAWING IS A CONTROLLED DOCUMENT. THE CUSTOMER'S PROPERTY.

TE Connectivity
 MTA-100 SHROUDED HEADER ASSEMBLY, FRICTION LOCK STRAIGHT POST, .000000 GOLD.

DATE: 10/11/11
 DRAWING NO: A100779G-644487
 CUSTOMER DRAWING

METRIC