

4

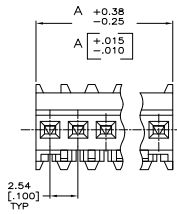
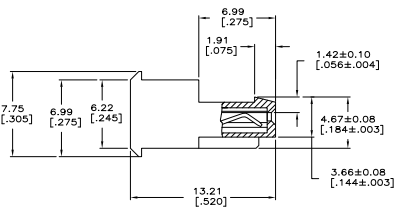
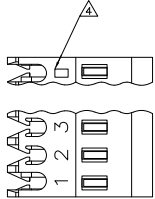
3

2

1

THIS DRAWING IS UNPUBLISHED. RELEASED FOR PUBLICATION. ALL RIGHTS RESERVED.

LOC		DIBT		REVISIONS			
P	LTR	DESCRIPTION	DATE	BY	APPD		
U		REVISED PER ECO-11-013373	15JUL11	HMR	SM		



- △ MATERIAL: CONNECTOR - NYLON UL94V-2 (RED).  
CONTACTS - 0.30[.012] THICK COPPER ALLOY  
0.00076[.000030] GOLD OR 0.00076[.000030]  
TOTAL GOLD FLASH OVER PALLADIUM NICKEL,  
PER TE CONNECTIVITY'S DISCRETION, IN  
CONTACT AREA WITH BRIGHT TIN-LEAD SLOT  
AREA FOR 641241-2 THRU 2-641241-8 OR MATTE WHISKER  
MITIGATED TIN FOR 3-641241-2 THRU 5-641241-8 OVER  
NICKEL UNDERPLATE.
- 2. CONTACTS ACCEPT 22 AWG WIRE WITH 1.52 [.060] MAX INSULATION  
DIAMETER.
- 3. CONTACTS MUST ACCEPT 0.64±0.03 [.025±.001] SQUARE  
POST AND REMAIN LOCKED IN POSITION.
- △ IDENTIFICATION NUMBER FOR LAST CIRCUIT MAY NOT APPEAR ON ALL  
ASSEMBLIES.
- 5. DIMENSIONS IN BRACKETS ARE IN INCHES.
- 6. HOUSING FEATURES ARE: FEED THRU WITH LOCKING RAMP.
- △ OBSOLETE PARTS: OBSOLETE CIS STREAMLINING PER D.RENAUD/D.SINISI

LEAD FREE				SUPERCEDED				CONTAINS LEAD			
DIM A	NO.OF POSN	ASSEMBLY		DIM A	NO.OF POSN	ASSEMBLY		DIM A	NO.OF POSN	ASSEMBLY	
71.12 [2.800]	28	5-641241-8		71.12 [2.800]	28	2-641241-8		71.12 [2.800]	28	2-641241-8	
68.58 [2.700]	27	5-641241-7		68.58 [2.700]	27	2-641241-7		68.58 [2.700]	27	2-641241-7	
66.04 [2.600]	26	5-641241-6		66.04 [2.600]	26	2-641241-6		66.04 [2.600]	26	2-641241-6	
63.50 [2.500]	25	5-641241-5		63.50 [2.500]	25	2-641241-5		63.50 [2.500]	25	2-641241-5	
60.96 [2.400]	24	5-641241-4		60.96 [2.400]	24	2-641241-4		60.96 [2.400]	24	2-641241-4	
58.42 [2.300]	23	5-641241-3		58.42 [2.300]	23	2-641241-3		58.42 [2.300]	23	2-641241-3	
55.88 [2.200]	22	5-641241-2		55.88 [2.200]	22	2-641241-2		55.88 [2.200]	22	2-641241-2	
53.34 [2.100]	21	5-641241-1		53.34 [2.100]	21	2-641241-1		53.34 [2.100]	21	2-641241-1	
50.80 [2.000]	20	5-641241-0		50.80 [2.000]	20	2-641241-0		50.80 [2.000]	20	2-641241-0	
48.26 [1.900]	19	4-641241-9		48.26 [1.900]	19	1-641241-9		48.26 [1.900]	19	1-641241-9	
45.72 [1.800]	18	4-641241-8		45.72 [1.800]	18	1-641241-8		45.72 [1.800]	18	1-641241-8	
43.18 [1.700]	17	4-641241-7		43.18 [1.700]	17	1-641241-7		43.18 [1.700]	17	1-641241-7	
40.64 [1.600]	16	4-641241-6		40.64 [1.600]	16	1-641241-6		40.64 [1.600]	16	1-641241-6	
38.10 [1.500]	15	4-641241-5		38.10 [1.500]	15	1-641241-5		38.10 [1.500]	15	1-641241-5	
35.56 [1.400]	14	4-641241-4		35.56 [1.400]	14	1-641241-4		35.56 [1.400]	14	1-641241-4	
33.02 [1.300]	13	4-641241-3		33.02 [1.300]	13	1-641241-3		33.02 [1.300]	13	1-641241-3	
30.48 [1.200]	12	4-641241-2		30.48 [1.200]	12	1-641241-2		30.48 [1.200]	12	1-641241-2	
27.94 [1.100]	11	4-641241-1		27.94 [1.100]	11	1-641241-1		27.94 [1.100]	11	1-641241-1	
25.40 [1.000]	10	4-641241-0		25.40 [1.000]	10	1-641241-0		25.40 [1.000]	10	1-641241-0	
22.86 [.900]	9	3-641241-9		22.86 [.900]	9	641241-9		22.86 [.900]	9	641241-9	
20.32 [.800]	8	3-641241-8		20.32 [.800]	8	641241-8		20.32 [.800]	8	641241-8	
17.78 [.700]	7	3-641241-7		17.78 [.700]	7	641241-7		17.78 [.700]	7	641241-7	
15.24 [.600]	6	3-641241-6		15.24 [.600]	6	641241-6		15.24 [.600]	6	641241-6	
12.70 [.500]	5	3-641241-5		12.70 [.500]	5	641241-5		12.70 [.500]	5	641241-5	
10.16 [.400]	4	3-641241-4		10.16 [.400]	4	△ 641241-4		10.16 [.400]	4	△ 641241-4	
7.62 [.300]	3	3-641241-3		7.62 [.300]	3	△ 641241-3		7.62 [.300]	3	△ 641241-3	
5.08 [.200]	2	3-641241-2		5.08 [.200]	2	641241-2		5.08 [.200]	2	641241-2	

# METRIC

THIS DRAWING IS A CONTROLLED DOCUMENT.

INCHES: DIMENSIONS IN INCHES

PLC: 0, 1, 2, 3, 4, 5, 6, 7, 8, 9, 10, 11, 12, 13, 14, 15, 16, 17, 18, 19, 20, 21, 22, 23, 24, 25, 26, 27, 28

FINISH: 1, 2, 3, 4, 5, 6, 7, 8, 9, 10, 11, 12, 13, 14, 15, 16, 17, 18, 19, 20, 21, 22, 23, 24, 25, 26, 27, 28

DATE: 28-DEC-2004

BY: S. HOOVER

CHK: D. BOSSI

APP: D. BOSSI

PRODUCT SPEC: 108-1050

APPLICATION SPEC: 114-1019

WEIGHT: A2

SIZE: A2

CAGE CODE: 00779

DRAWING NO: 641241

RESTRICTED TO: U

CUSTOMER DRAWING

SCALE: 4:1

SHEET: 1 of 1

REV: U