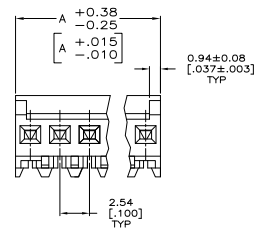
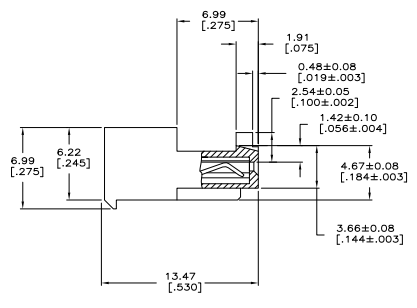
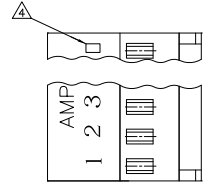


REV	DATE	DESCRIPTION	BY	CHK	APP
D		REVISED PER ECO-07-003723	22FEB07	KW	DB
DT		REVISED PER ECO-09-021510	14SEP09	KK	AEG

1. MATERIAL: CONNECTOR-NYLON UL94V-2 (WHITE).
 CONTACTS-0.30 [.012] THICK COPPER ALLOY
 BRIGHT TIN-LEAD 0.00203 [.000080] MINIMUM THICK FOR CONTACTS
 644795-2 THRU 644795-3,
 MATTE WHISKER MITIGATED TIN PLATE 0.00203 [.000080] MINIMUM THICK OVER
 NICKEL UNDERPLATE FOR CONTACTS 3-644795-2 THRU 3-644795-3.
2. CONTACTS ACCEPT 24 AWG WIRE WITH 1.52 [.060] MAXIMUM INSULATION DIAMETER.
3. CONTACTS MUST ACCEPT 0.36-0.51 [.014-.020] SQUARE OR ROUND POST AND
 REMAINED LOCKED IN POSITION.
4. IDENTIFICATION NUMBER FOR LAST CIRCUIT MAY NOT APPEAR ON ALL ASSEMBLIES.
5. DIMENSIONS IN BRACKETS ARE IN INCHES.
6. HOUSING FEATURES ARE: CLOSED END WITH LOCKING RAMP, POLARIZING TAB
 AND WITH LED CONTACT.
7. OBSOLETE PARTS: OBSOLETE CIS STREAMLINING PER D.RENAUD/D.SINISI



DIM A	NO. OF POSN	ASSEMBLY	LEAD FREE
7.62 [.300]	3	3-644795-3	
5.08 [.200]	2	3-644795-2	

⚠ SUPERSEDED

DIM A	NO. OF POSN	ASSEMBLY	CONTAINS LEAD
7.62 [.300]	3	644795-3	
5.08 [.200]	2	644795-2	



THIS DRAWING IS A CONTROLLED DOCUMENT. 10-REV-0001
 HOOPER 10-REV-0001
 BOSSI 10-REV-0001
 108-1050
 114-1019
 CUSTOMER DRAWING

TYS Electronics Corporation
 Harrisburg, Pa 17105-3008
 MTA-100 CONNECTOR ASSEMBLY,
 24 AWG, FOR .014 TO .020 POST, SPECIAL
 DRAWING NO. A100779 C=644795
 DATE 6.1 1 1 1 D1