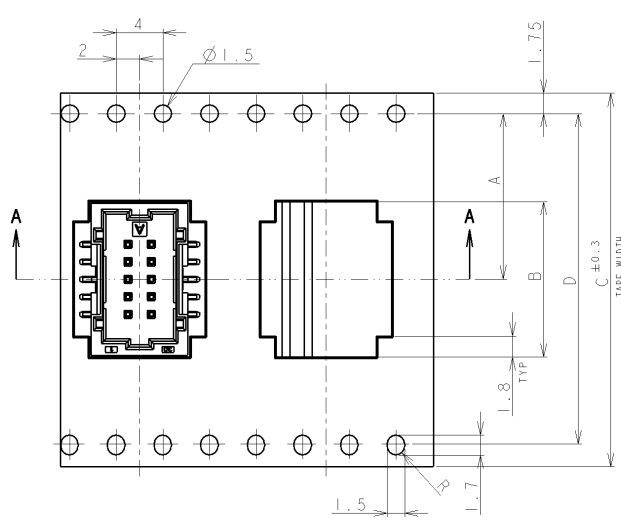
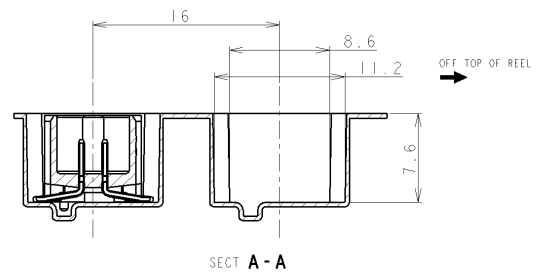
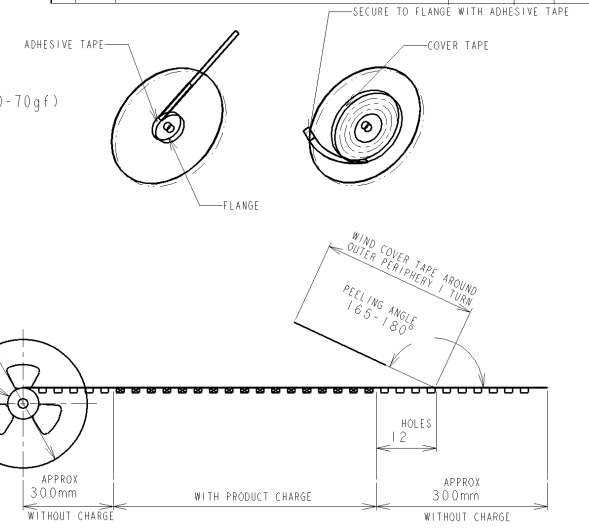


THIS DRAWING IS UNPUBLISHED.
 RELEASED FOR PUBLICATION
 COPYRIGHT 19 BY AMP INCORPORATED, ALL RIGHTS RESERVED.

LOC	DIST	REVISIONS					
ES	00	7	LYR	DESCRIPTION	DATE	DWN	APVD
				BI REVISED ECR-09-024244	06NOV09	C. Z. S. Y	



NOTE:
 1. PEELING STRENGTH: 0.20-0.69N(20-70gf)
 PEELING ANGLE: 165-180°
 PEELING SPEED: 300mm/MINUTE.



TOLERANCES UNLESS OTHERWISE SPECIFIED:

10 ≥ * > 10	: ±0.2
30 ≥ * > 30	: ±0.25
100 ≥ * > 30	: ±0.3
ANGLE	: ±3°

THIS DRAWING IS A CONTROLLED DOCUMENT FOR AMP INCORPORATED. IT IS SUBJECT TO CHANGE AND THE CONTROLLING ENGINEERING ORGANIZATION SHOULD BE CONTACTED FOR THE LATEST REVISION.

DIMENSIONS:	TOLERANCES UNLESS OTHERWISE SPECIFIED:
mm	0 PLC ±.1
	1 PLC ±.15
	2 PLC ±.05
	3 PLC ±.001
	4 PLS ±.0001
	ANGLES ±.
MATERIAL	FINISH

DWN	S. XU	31 JAN 03
CHK	S. YAO	31 JAN 03
APVD	T. SASAKI	31 JAN 03
PRODUCT SPEC	108-60018	
APPLICATION SPEC	114-5223	
WEIGHT		
CUSTOMER DRAWING		

WIRE-RANGE	INSULATION DIA
tyco Electronics	
Tyco Electronics Corporation SHANGHAI, CHINA	
NAME AMP Mini Common Terminated (CT) Connector 1.5mm PITCH DOUBLE ROW POST HDR ASS'Y (V) SMT TYPE WITH BOSS, EMBOSS TAPE PACKAGED	
SIZE	CAGE CODE
A3	00779
DRAWING NO	RESTRICTED TO
C-292229	
SCALE	SHEET
NON	1 OF 4
REV	BI

LOC	DIST	REVISIONS					
FB	00	P	LTR	DESCRIPTION	DATE	DWN	APVD

37.5	33.5	52.4	56	35.8	26.2	400	40	BLACK	9-292229-0
37.5	33.5	40.4	44	34.3	20.2	400	38		8-292229-8
37.5	33.5	40.4	44	32.8	20.2	400	36		8-292229-6
29.5	25.5	40.4	44	31.3	20.2	400	34		8-292229-4
29.5	25.5	40.4	44	29.8	20.2	400	32		8-292229-2
29.5	25.5	40.4	44	28.3	20.2	400	30		8-292229-0
29.5	25.5	40.4	44	26.8	20.2	400	28		7-292229-8
21.5	17.5	40.4	44	25.3	20.2	400	26		7-292229-6
21.5	17.5	40.4	44	23.8	20.2	400	24		7-292229-4
21.5	17.5	28.4	32	22.2	14.2	400	22		7-292229-2
W2	W1	D	C	B	A	QTY/ REEL	POS	COLOR	ON TAPE P/N
DIMENSIONS									

37.5	33.5	52.4	56	35.8	26.2	400	40	BEIGE	4-292229-0
37.5	33.5	40.4	44	34.3	20.2	400	38		3-292229-8
37.5	33.5	40.4	44	32.8	20.2	400	36		3-292229-6
29.5	25.5	40.4	44	31.3	20.2	400	34		3-292229-4
29.5	25.5	40.4	44	29.8	20.2	400	32		3-292229-2
29.5	25.5	40.4	44	28.3	20.2	400	30		3-292229-0
29.5	25.5	40.4	44	26.8	20.2	400	28		2-292229-8
21.5	17.5	40.4	44	25.3	20.2	400	26		2-292229-6
21.5	17.5	40.4	44	23.8	20.2	400	24		2-292229-4
21.5	17.5	28.4	32	22.2	14.2	400	22		2-292229-2
W2	W1	D	C	B	A	QTY/ REEL	POS	COLOR	ON TAPE P/N
DIMENSIONS									

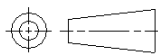
RELEASED FOR PUBLICATION

THIS DRAWING IS UNPUBLISHED.

BY TYCO ELECTRONICS CORPORATION. ALL RIGHTS RESERVED.

© COPYRIGHT

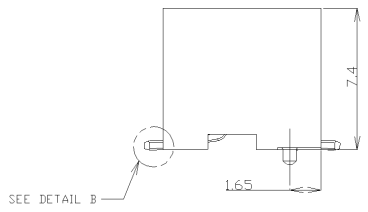
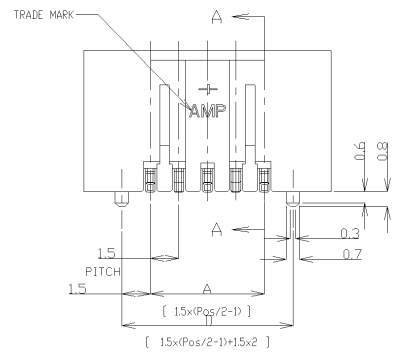
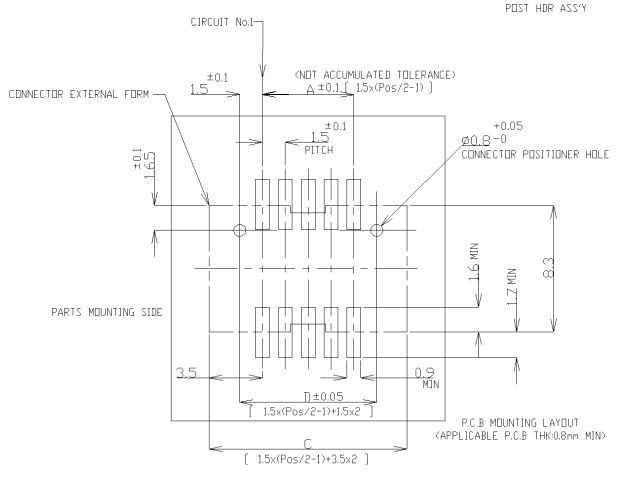
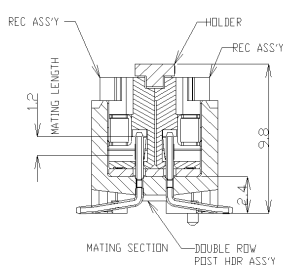
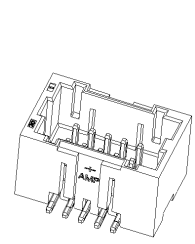
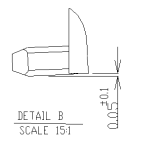
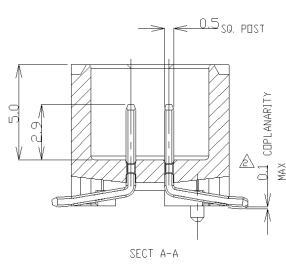
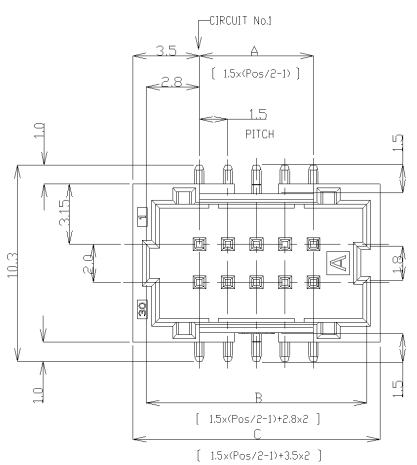
DIMENSIONS:	
mm	
TOLERANCES UNLESS OTHERWISE SPECIFIED:	
0 PLC	±
1 PLC	±0.1
2 PLC	±0.15
3 PLC	±0.001
4 PLC	±0.0001
ANGLES	±



DWN	
CHK	
APVD	
PRODUCT SPEC	SEE SHEET 1 OF 4
APPLICATION SPEC	SEE SHEET 1 OF 4
WEIGHT	

WIRE RANGE		INSULATION DIA	
MATERIAL		FINISH	
Tyco Electronics Corporation SHANGHAI, CHINA			
NAME AMP Mini Common Terminated (CT) Connector 1.5mm PITCH DOUBLE ROW POST HDR ASS'Y (V) SMT TYPE WITH BOSS, EMBOSS TAPE PACKAGED			
SIZE	CAGE CODE	DRAWING NO	RESTRICTED TO
A4	00779	C-292229	-

CUSTOMER DRAWING		SCALE	NON	SHEET	2	OF	4	REV	BI
------------------	--	-------	-----	-------	---	----	---	-----	----



NOTES:
 1. MATERIAL: HOUSING-HIGH HEAT RESISTANT, GLASS FILLED NYLON, UL94V-0, COLOR-BEIGE, BLACK
 POSTS-100% BRASS WIRE
 2. TO BE MEASURED WITH CONNECTOR PLACED ON HORIZONTAL DATUM SURFACE.
 3. FLAT OF SOLDER TINE FROM DATUM SURFACE IS 0.1mm MAX.

TOLERANCES UNLESS OTHERWISE SPECIFIED:
 10 > 30 ±0.2
 30 > 100 ±0.25
 100 > 300 ±0.3
 ANGLE ±3°

THIS DRAWING IS A CONTROLLED DOCUMENT.		DWN	-	 Tyco Electronics Corporation Shanghai, P.R. China, 200233	NAME AMP Mini Common Terminated (CT) Connector 1.5mm PITCH DBL ROW POST HDR ASSY (V) SMT TYPE WITH BOSS
DIMENSIONS:	TOLERANCES UNLESS OTHERWISE SPECIFIED:	CHK	-		
mm	0 PLC ±	APVD	-		
	1 PLC ±	PRODUCT SPEC	-		
	2 PLC ±	APPLICATION SPEC	-	SIZE	A3
	3 PLC ±	WEIGHT	-	CAGE CODE	00779
	4 PLC ±			DRAWING NO	C=292229
MATERIAL	FINISH	CUSTOMER DRAWING		RESTRICTED TO	-
SEE NOTE 1	SEE NOTE 1	SCALE	NON	SHEET	3 of 4
				REV	B1

LOC	DIST	REVISIONS					
—	—	P	LTR	DESCRIPTION	DATE	DWN	APVD
		—	—		—	—	—


31.5	35.5	34.1	28.5	40	9-292229-0	4-292229-0
30.0	34.0	22.6	27.0	38	8-292229-8	3-292229-8
28.5	32.5	31.1	25.5	36	8-292229-6	3-292229-6
27.0	31.0	29.6	24.0	34	8-292229-4	3-292229-4
25.5	29.5	28.1	22.5	32	8-292229-2	3-292229-2
24.0	28.0	26.6	21.0	30	8-292229-0	3-292229-0
22.5	26.5	25.1	19.5	28	7-292229-8	2-292229-8
21.0	25.0	23.6	18.0	26	7-292229-6	2-292229-6
19.5	23.5	22.1	16.5	24	7-292229-4	2-292229-4
18.0	22.0	20.6	15.0	22	7-292229-2	2-292229-2
D	C	B	A	Pos.	BLACK	BEIGE
DIMENSIONS					P/N	

THIS DRAWING IS UNPUBLISHED.

ALL INTERNATIONAL RIGHTS RESERVED.

BY TYCO ELECTRONICS CORPORATION.

© COPYRIGHT

DIMENSIONS: mm	DWN	MATERIAL	FINISH
	—	—	—
TOLERANCES UNLESS OTHERWISE SPECIFIED:	CHK	 Tyco Electronics Corporation Shanghai, P.R. China, 200233	
	APVD		
0 PLC ± -	PRODUCT SPEC	NAME	
1 PLC ± -	—	AMP Mini Common Terminated (CT) Conn. 1.5mm PITCH	
2 PLC ± -	APPLICATION SPEC	DBL ROW POST HDR ASS'Y (V) SMT TYPE W BOSS	
3 PLC ± -	—	SIZE	CAGE CODE
4 PLC ± -	—	A4	00779
ANGLES ± -	WEIGHT	DRAWING NO	RESTRICTED TO
	—	© 292229	—
CUSTOMER DRAWING		SCALE	SHEET
		NON	4 of 4
			REV B1