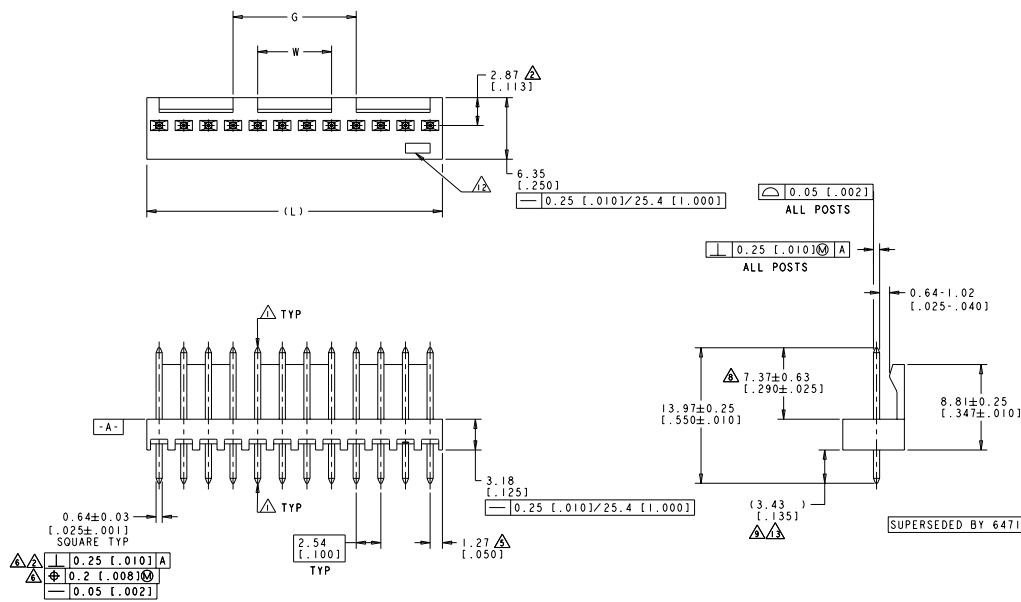
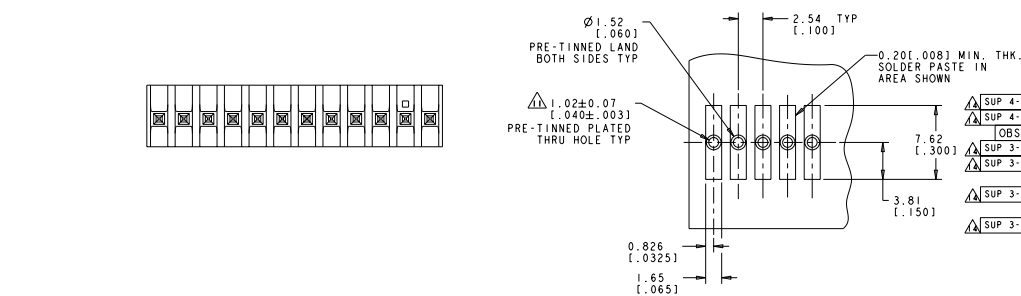


REV	DATE	DESCRIPTION	BY	CHK	APP
P		REVISED PER ECO-11-021838			



- △ POST WITHSTAND 13 NEWTONS (3 LBS) MIN AXIAL FORCE IN DIRECTION SHOWN WITHOUT DISLODGING.
- △ MEASURED AT [-A-].
- 3. PARTS COMPLY WITH SOLDERABILITY SPEC 109-11-2.
- △ MATERIAL: HOUSING: NYLON, 4/6, HIGH TEMP. BLACK. POST - COPPER ALLOY (SEE TABLE FOR PLATING.)
- △ COORDINATE DIMENSION APPLIES FROM CENTER OF ACTUAL FEATURE.
- △ POSTS TO BE MEASURED WHEN STRIP HELD FLAT.
- 7. DIMENSIONS IN BRACKETS ARE IN INCHES.
- △ PLATING: GOLD PLATE AREA, 0.00076 [0.00030] GOLD OR 0.00008 [0.00003] MIN GOLD FLASH OVER 0.00068 [0.00027] PALLADIUM NICKEL, PER TE CONNECTIVITY'S DISCRETION, ALL SIDES, OVER NICKEL UNDERPLATE, 0.00127 [0.00050] MIN, ALL SIDES AND ENTIRE LENGTH OF POST.
- △ BRIGHT TIN/LEAD (93/7) PLATE AREA, 0.00381-0.00889 [0.00150-0.00350] THICK, ALL FOUR SIDES, 3.56[.140] MIN.
- △ TOLERANCES APPLY TO SOLDER SIDE OF BOARD.
- △ ONE HOLE MAY BE UNDERSIZED 0.81-0.90 [0.32-.035] DIAMETER FOR ASSEMBLY RETENTION DURING PROCESSING.
- △ TE LOGO, UL, AND CSA TRADEMARKS TO APPEAR ON THIS SURFACE.
- △ MATTE TIN PLATE AREA, 0.00381-0.00889 [0.00150-0.00350] THICK, ALL FOUR SIDES, 3.56[.140] MIN.
- △ OBSOLETE PARTS: OBSOLETE CIS STREAMLINING PER D.RENAUD/D.SINISI



RECOMMENDED MOUNTING HOLE PATTERN FOR 1.57±0.20[.062±.008] THICK P.C. BOARD

SUPERSEDED BY 647116-MXCU

POST FINISH	W	G	L	NO OF POSN	PART NO
△△	12.70 [0.500]	25.40 [1.000]	43.18 [1.700]	17	4-647116-7
△△	7.62 [0.300]	12.70 [0.500]	30.48 [1.200]	12	4-647116-2
△△	-	10.16 [0.400]	27.94 [1.100]	11	4-647116-1
△△	-	7.62 [0.300]	25.40 [1.000]	10	4-647116-0
△△	-	5.08 [0.200]	22.86 [0.900]	9	3-647116-9
△△	-	2.54 [0.100]	20.32 [0.800]	8	3-647116-8
△△	-	-	17.78 [0.700]	7	3-647116-7
△△	-	-	15.24 [0.600]	6	3-647116-6
△△	-	-	12.70 [0.500]	5	3-647116-5
△△	-	-	10.16 [0.400]	4	3-647116-4
△△	-	-	7.62 [0.300]	3	3-647116-3
△△	-	-	5.08 [0.200]	2	3-647116-2
△△	7.62 [0.300]	12.70 [0.500]	30.48 [1.200]	12	1-647116-2
△△	-	10.16 [0.400]	27.94 [1.100]	11	1-647116-1
△△	-	7.62 [0.300]	25.40 [1.000]	10	1-647116-0
△△	-	5.08 [0.200]	22.86 [0.900]	9	647116-9
△△	-	2.54 [0.100]	20.32 [0.800]	8	647116-8
△△	-	-	17.78 [0.700]	7	647116-7
△△	-	-	15.24 [0.600]	6	647116-6
△△	-	-	12.70 [0.500]	5	647116-5
△△	-	-	10.16 [0.400]	4	647116-4
△△	-	-	7.62 [0.300]	3	647116-3
△△	-	-	5.08 [0.200]	2	647116-2



THIS DRAWING IS A CONTROLLED DOCUMENT. DATE: 11NOV2001 BY: M. BOSS FOR: 647116-2

TE Connectivity
 MTA-100 HEADER ASSY, HIGH TEMPERATURE FRICTION LOCK, .025 SQUARE STRAIGHT POST, 000030 GOLD

00779-647116