

4

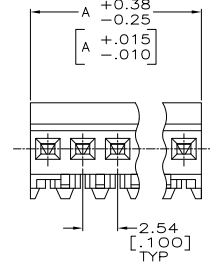
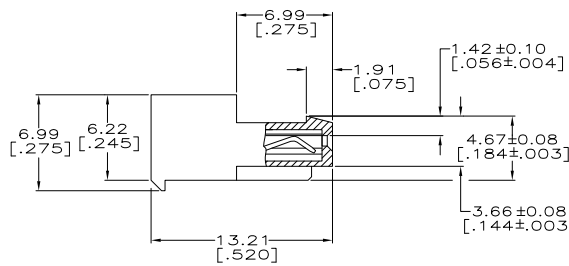
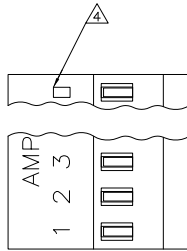
3

2

1

THIS DRAWING IS UNPUBLISHED. RELEASED FOR PUBLICATION. ALL RIGHTS RESERVED.

LOC	DIST	REVISIONS		
CM	00	F	LR	DESCRIPTION
		S		REVISED PER ECO-11-013373
				DATE
				15JUL11
				BY
				HMR
				APD
				SM



YES	71.12[2.800]	28	5-641237-8
YES	68.58[2.700]	27	5-641237-7
YES	66.04[2.600]	26	5-641237-6
YES	63.50[2.500]	25	5-641237-5
YES	60.96[2.400]	24	5-641237-4
YES	58.42[2.300]	23	5-641237-3
YES	55.88[2.200]	22	5-641237-2
YES	53.34[2.100]	21	5-641237-1
YES	50.80[2.000]	20	5-641237-0
YES	48.26[1.900]	19	4-641237-9
YES	45.72[1.800]	18	4-641237-8
YES	43.18[1.700]	17	4-641237-7
YES	40.64[1.600]	16	4-641237-6
YES	38.10[1.500]	15	4-641237-5
YES	35.56[1.400]	14	4-641237-4
YES	33.02[1.300]	13	4-641237-3
YES	30.48[1.200]	12	4-641237-2
YES	27.94[1.100]	11	4-641237-1
YES	25.40[1.000]	10	4-641237-0
YES	22.86[.900]	9	3-641237-9
YES	20.32[.800]	8	3-641237-8
YES	17.78[.700]	7	3-641237-7
YES	15.24[.600]	6	3-641237-6
YES	12.70[.500]	5	3-641237-5
YES	10.16[.400]	4	3-641237-4
YES	7.62[.300]	3	3-641237-3
YES	5.08[.200]	2	3-641237-2

NO	71.12[2.800]	28	2-641237-8	SUPERSEDED BY 5-641237-8
NO	68.58[2.700]	27	2-641237-7	SUPERSEDED BY 5-641237-7
NO	66.04[2.600]	26	2-641237-6	SUPERSEDED BY 5-641237-6
NO	63.50[2.500]	25	2-641237-5	SUPERSEDED BY 5-641237-5
NO	60.96[2.400]	24	2-641237-4	SUPERSEDED BY 5-641237-4
NO	58.42[2.300]	23	2-641237-3	SUPERSEDED BY 5-641237-3
NO	55.88[2.200]	22	2-641237-2	SUPERSEDED BY 5-641237-2
NO	53.34[2.100]	21	2-641237-1	SUPERSEDED BY 5-641237-1
NO	50.80[2.000]	20	2-641237-0	SUPERSEDED BY 5-641237-0
NO	48.26[1.900]	19	1-641237-9	SUPERSEDED BY 4-641237-9
NO	45.72[1.800]	18	1-641237-8	SUPERSEDED BY 4-641237-8
NO	43.18[1.700]	17	1-641237-7	SUPERSEDED BY 4-641237-7
NO	40.64[1.600]	16	1-641237-6	
NO	38.10[1.500]	15	1-641237-5	SUPERSEDED BY 4-641237-5
NO	35.56[1.400]	14	1-641237-4	
NO	33.02[1.300]	13	1-641237-3	SUPERSEDED BY 4-641237-3
NO	30.48[1.200]	12	1-641237-2	
NO	27.94[1.100]	11	1-641237-1	
NO	25.40[1.000]	10	1-641237-0	
NO	22.86[.900]	9	641237-9	
NO	20.32[.800]	8	641237-8	
NO	17.78[.700]	7	641237-7	
NO	15.24[.600]	6	641237-6	
NO	12.70[.500]	5	641237-5	
NO	10.16[.400]	4	641237-4	
NO	7.62[.300]	3	641237-3	
NO	5.08[.200]	2	641237-2	
LEADFREE	DIM A	NO. OF CIRCUITS	PART NO.	

- 1 MATERIAL: CONNECTOR - NYLON UL94V-2 (RED). CONTACTS - 0.30[.012] THICK COPPER ALLOY 0.00076[.000030] GOLD OR 0.00076[.000030] TOTAL GOLD FLASH OVER PALLADIUM NICKEL, PER TE CONNECTIVITY'S DISCRETION, IN CONTACT AREA WITH BRIGHT TIN-LEAD SLOT AREA FOR 641237-2 THRU 5-641237-8 OR MATTE WHISKER MITIGATED TIN FOR 3-641237-2 THRU 5-641237-8 OVER NICKEL UNDERPLATE.
- 2. CONTACTS ACCEPT 22 AWG WIRE WITH 1.52[.060] MAX INSULATION DIAMETER.
- 3. CONTACTS MUST ACCEPT 0.64±0.03[.025] POST AND REMAIN LOCKED IN POSITION.
- 4 IDENTIFICATION NUMBER FOR LAST CIRCUIT MAY NOT APPEAR ON ALL ASSEMBLIES.
- 5. DIMENSIONS IN BRACKETS ARE IN INCHES.
- 6. HOUSING FEATURES ARE: CLOSED END WITH LOCKING RAMP.
- 7 OBSOLETE PARTS: OBSOLETE CIS STREAMLINING PER D.RENAUD/D.SINISI

METRIC

THIS DRAWING IS A CONTROLLED DOCUMENT.

DIMENSIONS: mm [INCHES]	DESIGNER: S. CARPENTER 11JAN2003	DATE: 11JAN2003	TE Connectivity
TOLERANCES UNLESS OTHERWISE SPECIFIED:	CHK: D. BOSSI 11JAN2003	NAME: MTA 100 CONNECTOR ASSEMBLY, 22 AWG, STANDARD	
0 PLC ± .010 [0.004]	APP: D. BOSSI 11JAN2003	PRODUCT SPEC: 108-1050	
1 PLC ± .015 [0.006]	APPLICATION SPEC: 114-1019	SIZE: A2	CAGE CODE: 00779
2 PLC ± .015 [0.006]	WEIGHT: CUSTOMER DRAWING	DRAWING NO: 641237	RESTRICTED TO: -
3 PLC ± .015 [0.006]		SCALE: 5:1	SHEET: 1 of 1
4 PLC ± .015 [0.006]			REV: S