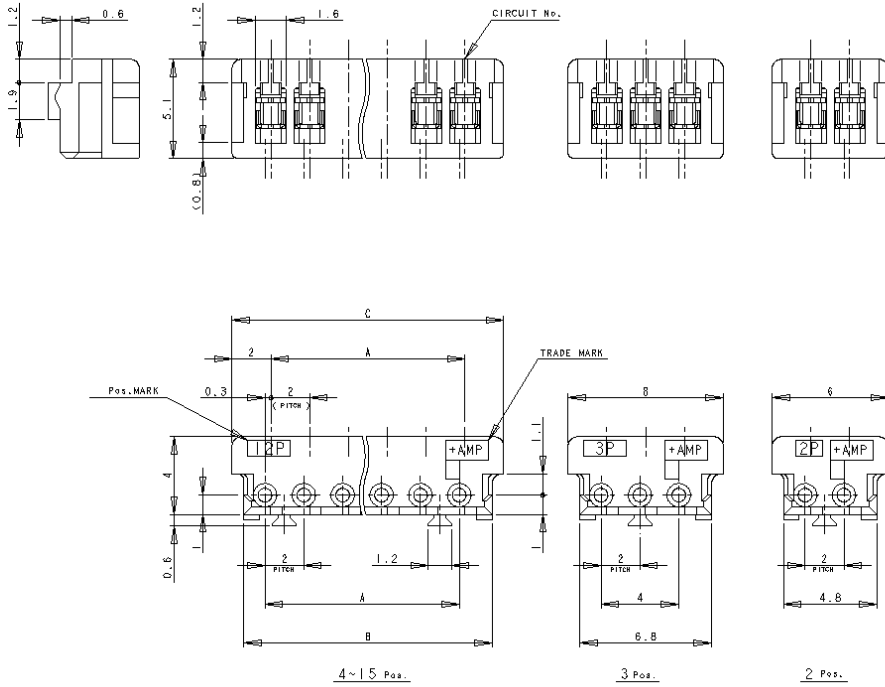


NUMBER C-176392

METRIC

PRINT DIST  
DIMENSIONS IN MM. DO NOT SCALE PRINT

AMP  
REV. 10/83



- NOTES:
1. APPLICABLE WIRE SIZE : AWG# 28-26  
(UL1571, UL1061)  
INSULATION DIA RANGE : 0.83-1.05
  2. MATERIAL :  
HOUSING : PBT(G.F)UL94V-0  
CONTACT : GOLD PLATED PHOS-BRONZE (0.0002mm)
  3. PRODUCT SPEC : 108-5218
  4. APPLICATION SPEC : 114-5104

1-176392-5	15	28	30.8	32
1-176392-4	14	26	28.8	30
1-176392-3	13	24	26.8	28
1-176392-2	12	22	24.8	26
1-176392-1	11	20	22.8	24
1-176392-0	10	18	20.8	22
	-9	9	18.8	20
	-8	8	16.8	18
	-7	7	14.8	16
	-6	6	12.8	14
	-5	5	10.8	12
	-4	4	8.8	10
	-3	3	-AS SHOWN-	
176392-2	2	-AS SHOWN-		
NATURAL	POS	A	B	C
PART No.				

Copyright ©1999				Copyright ©1999				<b>AMP</b>			AMP MANUFACTURING (SINGAPORE) PTE. LTD.		
(WIRE RANGE)				(INSULATION DIA.)				(NAME)			MT REC HOUSING ASS'Y (AMP CT CONNECTOR 2mm PITCH) (GOLD PLATING TYPE)		
NOTE 1 mm? (ANG - )				NOTE 1 mm? (FINISH)				GENERAL TOLERANCE			SIZE LOC (No.)		
(MATERIAL)				(FINISH)				0.0<< 10 : ±0.2			A3 DY C-176392		
NOTE 2				DR. 23/AUG/99 DE. 23/AUG/99				10<< 30 : ±0.25			(SCALE)		
A REDRAWN (FJ00-1083-99) J.T J.T				CHK. 25/AUG/99 APP. 16OCT01				30<< 100 : ±0.3			REV. B SHEET 1 OF 1		
LTR (REVISION RECORD) DR CHK DATE				CHK. J. TANIGAWA APP. WL CHOO				ANGLES : ±3°					

(CUSTOMER DRAWING)