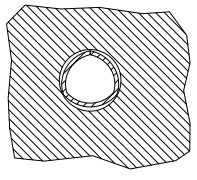
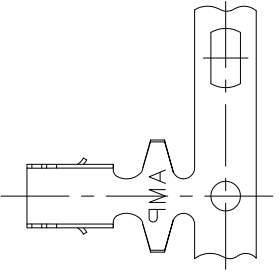


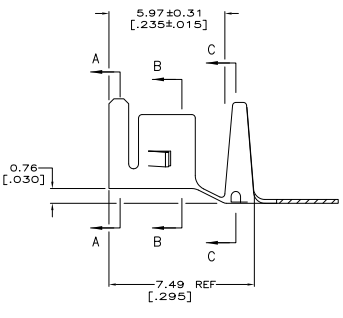
THIS DRAWING IS UNPUBLISHED
 ALL RIGHTS RESERVED

REV	DATE	DESCRIPTION	BY	APP
00				
C2		REVISED PER ECO-11-004820	11MM11	RK HMR

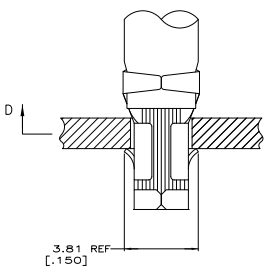


SECTION D-D

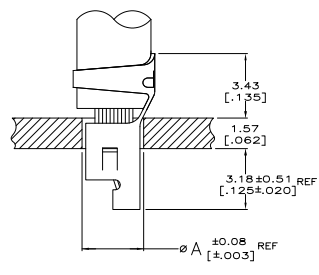
- 1 PARTS COMPLY WITH AMP SOLDERABILITY SPEC 109-11-3.
 - 2 WIRE RANGE: 3-5.5 mm² [12-10 AWG].
 - 3 INSULATION DIAMETER: 5.08 [.200] MAX.
 - 4 DIMENSIONS IN BRACKETS ARE IN INCHES.
- 0.00508 [.000200] MIN BRIGHT TIN-LEAD.
 0.00508 [.000200] MIN HALT TIN.



SECTION A-A

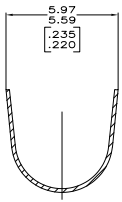
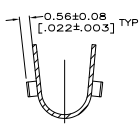
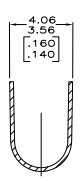


SECTION B-B



SECTION C-C

3.76	[.148]	10
3.18	[.125]	12
A		AWG



	3-794037-1
	794037-1
FINISH	PART NO.

THIS DRAWING IS A CONTROLLED DOCUMENT.		DESIGNED BY	DATE	REVISED BY	DATE
APPROVED BY	DATE	DESIGNED BY	DATE	REVISED BY	DATE
WORKING	0.198 [0.0078] PH BRZ	REVISION SPEC	SIZE	DATE	ISSUE NO
ISSUE		CUSTOMER DRAWING	A1	000779	794037
			SCALE	10:1	1 of 1

TE Connectivity
 TERMINAL, AMP-IN