

4

3

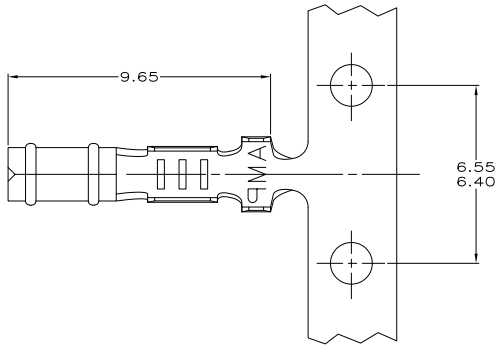
2

1

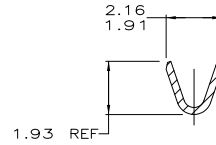
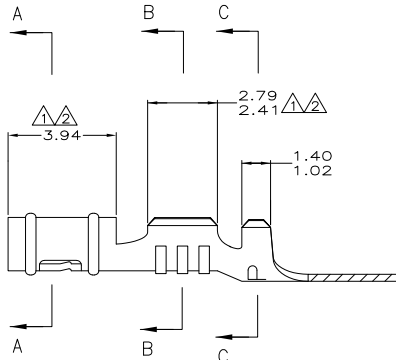
THIS DRAWING IS UNPUBLISHED. RELEASED FOR PUBLICATION. ALL RIGHTS RESERVED.

LOC	DIST	REVISIONS		
F	LNK	DESCRIPTION	DATE	BY
CM	52			
	AH1	REVISED PER ECO-11-004917	11MAR11	RK HMR

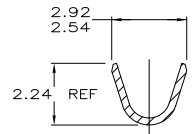
- △ 0.00038 MIN SELECTIVE GOLD PLATING ON INSIDE OF RECEPTACLE AND WIRE BARREL OVER NICKEL OVER ALL UNDERPLATE.
- △ 0.00076 MIN SELECTIVE GOLD PLATING ON INSIDE OF RECEPTACLE AND WIRE BARREL OVER NICKEL OVER ALL UNDERPLATE.
- 3. WIRE RANGE: 0.2 - 0.6 MM² (24 - 20 AWG)
- 4. INSULATION RANGE: 1.14 - 1.78
- △ REVERSED REELED.



SECTION A-A



SECTION B-B



SECTION C-C

△	0.25 BE CU	60598-9	
△	0.25 BE CU	60598-8	
△	0.25 PH BRZ	60598-7	
△	0.25 PH BRZ	60598-5	
△	MATTE TIN	0.25 BE CU	60598-4
△	PRE-TIN	0.25 PH BRZ	60598-3
△	MATTE TIN	0.25 BE CU	60598-2
△	PRE-TIN	0.25 PH BRZ	60598-1
△	FINISH	MATERIAL	PART NUMBER

MM	IN	MM	IN	MM	IN	MM	IN
1.14	.045	1.91	.075	2.79	.110	-	-
1.02	.040	1.78	.070	2.54	.100	9.65	.380
0.25	.010	1.486	.0585	2.41	.095	6.55	.258
0.13	.005	1.47	.058	2.24	.088	6.40	.252
0.00076	0.00030	1.40	.055	2.16	.085	3.94	.155
0.00038	0.00015	1.359	.0535	1.93	.076	2.92	.115
MM	IN	MM	IN	MM	IN	MM	IN

CONVERSION TABLE

METRIC

THIS DRAWING IS A CONTROLLED DOCUMENT.

DESIGNED BY	T. BECK	DATE	5-08-97
CHECKED BY	SWING	DATE	5-08-97
APPROVED BY	B. BIDDICK	DATE	8-22-97
PRODUCT SPEC	108-1025		
APPLICATION SPEC	114-1008		
WEIGHT	-	SIZE	A2
		CAGE CODE	00779
		DRAWING NO	60598
MATERIAL	SEE TABLE	FINISH	SEE TABLE
CUSTOMER DRAWING		SCALE	10:1
		SHEET	1 of 1
		REV	AH1

TE Connectivity
RECEPTACLE, .058 DIAMETER, 24-20 AWG, .045-.070 INSULATION, P.C. CONTACT