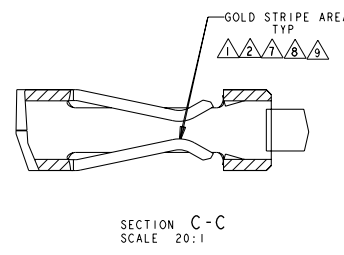
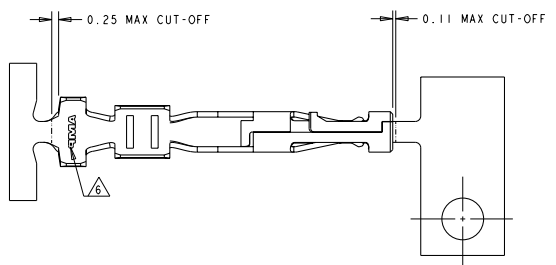
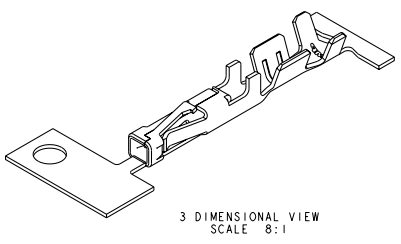
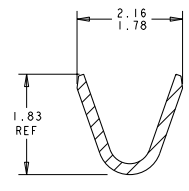
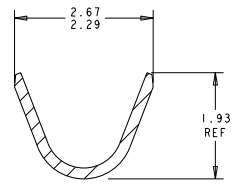
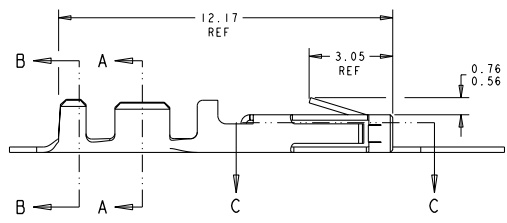


LOC	DISP	REVISIONS					
CM	53	P	LYR	DESCRIPTION	DATE	BY	APPR
		H3		REVISED PER ECO-11-025415	200211	JR	TM



- △ 0.000762 MIN THK GOLD STRIPE IN THE GOLD PLATE AREA, BRIGHT TIN IN THE CRIMP AREA, OVER NICKEL PLATE.
- △ 0.000381 THK GOLD STRIPE IN THE GOLD PLATE AREA, BRIGHT TIN IN THE CRIMP AREA, OVER NICKEL PLATE.
- △ 0.0015 - 0.0040 THK BRIGHT TIN.
- 4. WIRE RANGE: 20 - 24 AWG.
- 5. INSULATION RANGE 0.89 - 1.524.
- △ 6. AMP LOGO LOCATED APPROXIMATELY AS SHOWN.
- △ 7. 0.000762 THK GOLD STRIPE IN THE GOLD PLATE AREA, BRIGHT TIN-LEAD IN THE CRIMP AREA, OVER NICKEL PLATE.
- △ 8. 0.000381 THK GOLD STRIPE IN THE GOLD PLATE AREA, BRIGHT TIN-LEAD IN THE CRIMP AREA, OVER NICKEL PLATE.
- △ 9. 0.00102 MIN THK GOLD STRIPE IN THE GOLD PLATE AREA, BRIGHT TIN IN THE CRIMP AREA, OVER NICKEL PLATE.



△	1-794606-3
△	1-794606-2
△	1-794606-1
△	794606-3
△	794606-2
△	794606-1
FINISH	PART NUMBER

METRIC

THIS DRAWING IS A CONTROLLED DOCUMENT. DATE: 12-OCT-1999. DWG. NO. WHL1012. CDR. WHL1012. DATE: 12-OCT-1999. APPR. COBLE. DATE: 12-OCT-1999. NAME. PRODUCT SPEC. 108-1836. APPLICATION SPEC. WEIGHT. FINISH. MATERIAL: 0.2 PH BRZ. SEE TABLE. CUSTOMER DRAWING. SCALE: 10:1. SHEET 1 OF 1. REV H3.

TE TE Connectivity
CONTACT, RECEPTACLE, CRIMP, SNAP-IN, MICRO MATE-N-LOK(TM)

SIZE: A2. CASE CODE: 200779. DRAWING NO: 794606. RESTRICTED TO: -