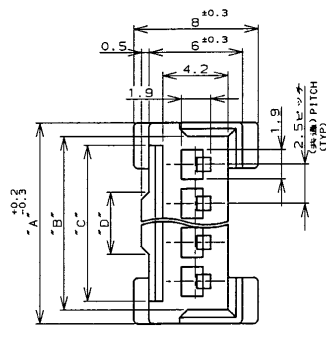
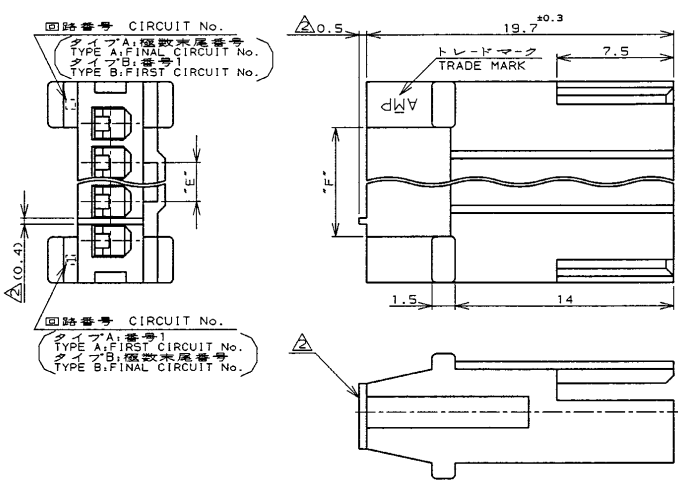


THIS DRAWING IS UNPUBLISHED. RELEASED FOR PUBLICATION
 (C) COPYRIGHT ALL RIGHTS RESERVED.

REVISONS		DATE	DWN	APVD
P	LYR	DESCRIPTION		
F2		REVISED PER ECO-11-005140	01APR11	RK HMR



2~6Pos.: AS SHOWN
 2~6極品: 本図
 (8, 10, 12極品は SHEET 2/2 を参照)
 (8, 10, 12Pos. - SEE SHEET 2/2)

- NOTES:
- APPLICABLE CONTACT NUMBER:
 170376 (AWG #20-#26)
 170377 (AWG #26-#30)
- △ APPLY TO 2Pos. HOUSING ONLY.
- 注記
- 適用コンタクト型番: 170376 (AWG #20-#26)
 170377 (AWG #26-#30)
- △ 2極品にのみ適用
- △ OBSOLETE PARTS: OBSOLETE CIS STREAMLINING PER D.RENAUD/D.SINISI

△
 OBSOLETE

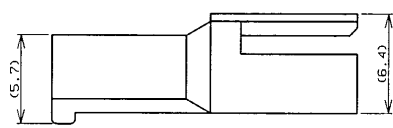
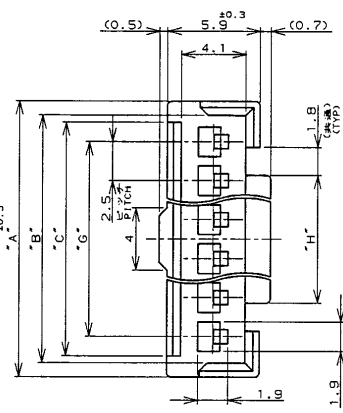
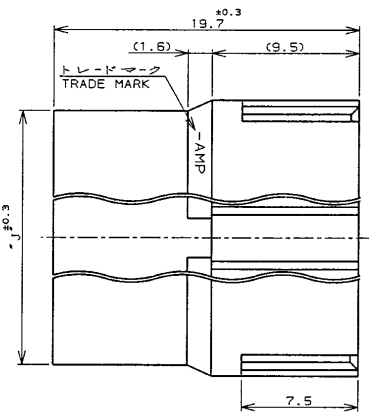
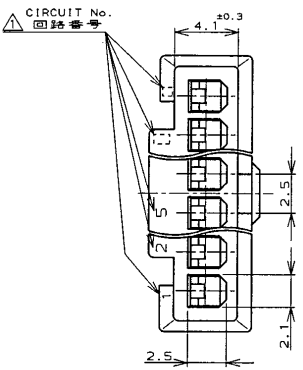
B (逆転) REVERSE TYPE	171880	(12)	▲	▲	15	16.1	17.9	6			4-	▲	-6	2-	▲	-6	▲	-6
		(9.5)				12.5	13.6	15.4	5				4-		-5	2-		-5
(7)				10	11.1	12.9	4				4-		-4	2-		-4		-4
(4.5)	2.5	4	7.5	8.6	10.4	3					4-		-3	2-		-3		-3
(2)	2	3.5	5	6.1	7.9	2					4-		-172212-2	2-		-172212-2		-172212-2
A (標準) STANDARD TYPE <td>171822</td> <td>(12)</td> <td>▲</td> <td>▲</td> <td>15</td> <td>16.1</td> <td>17.9</td> <td>6</td> <td></td> <td></td> <td>4-</td> <td>▲</td> <td>-6</td> <td>2-</td> <td>▲</td> <td>-6</td> <td>▲</td> <td>-6</td>	171822	(12)	▲	▲	15	16.1	17.9	6			4-	▲	-6	2-	▲	-6	▲	-6
(9.5)				12.5	13.6	15.4	5				4-		-5	2-		-5		-5
(7)				10	11.1	12.9	4				4-		-4	2-		-4		-4
(4.5)	2.5	4	7.5	8.6	10.4	3	8-	▲	-3	6-	▲	-3	4-		-3		-3	
(2)	2	3.5	5	6.1	7.9	2	8-	▲	-172211-2	6-	▲	-172211-2	4-		-172211-2	2-		-172211-2
回路番号 CIRCUIT No. タイプ TYPE	適合相手 ハウジング型番 MATING COUNTER PARTS No.	"F"	"E"	"D"	"C"	"B"	"A"	極数 Pos.	赤色 RED	緑色 GREEN	青色 BLUE	黒色 BLACK	自然色 NATURAL	型番 PARTS No.				

DIMENSIONS 単位: ㎜		TOLERANCES UNLESS OTHERWISE SPECIFIED		DWN H. Hoshino 9/1/96		DRAWING NO. C-172211	
一般公差 10% ±0.2 30% ±0.3 100% ±0.3 ANGLE: 0.5°		DRAWING NO. A3 00779		SCALE 4-1		SHEET 1 OF 2	
MATERIAL 材料 66ナイロン 66NYLON (UL94V-0)		FINISH 仕上げ 色: 表参照 COLOR: SEE TABLE		WEIGHT 114-5035		CUSTOMER DRAWING	
STE TE Connectivity		EI シリーズ コネクタ (電線対電線) EI SERIES CONNECTOR (Wier-to-Wire)		フリーハンギングタイプ キャップハウジング FREE HANGING TYPE CAP HOUSING		参考 図面	

THIS DRAWING IS UNPUBLISHED. RELEASED FOR PUBLICATION
 © COPYRIGHT

REV. NO.	DATE	DESCRIPTION	BY	CHKD
J				

8, 10, 12Pos.: AS SHOWN
 8, 10, 12極品: 本図
 (2-6極品はSHEET 1/2を参照)
 (2-6Pos.-SEE SHEET 1/2)



- NOTES,
- 1. CIRCUIT NUMBER; INDICATE EACH TWO NUMBERS FROM THE FIRST, FINAL AND CIRCUIT No.5.
 - 2. APPLICABLE CONTACT NUMBER:
170376 (AWG #20-#26)
170377 (AWG #26-#30)
 - 3. MATING COUNTER PARTS NUMBER: 171822

- 注記;
- 1. 回路番号は表示は1, 2, 5及び最終番号(極数)とその1番前の番号のみ。
 - 2. 適用コンタクト型番: 170376 (AWG #20-#26)
170377 (AWG #26-#30)
 - 3. 嵌合相手リセハウジング型番: 171822

色	21.3	13.2	17.5	20	20.9	22.7	8	2-	-8
BLACK	31.3	23.2	27.5	30	30.9	32.7	12	1-	-2
自然色 NATURAL	26.3	18.2	22.5	25	25.9	27.7	10	1-	-0
ハウジング色 HOUSING COLOR	21.3	13.2	17.5	20	20.9	22.7	8		172211-B

DIMENSIONS, 単位: mm		TOLERANCES UNLESS OTHERWISE SPECIFIED 一般公差 10% ± 0.2 30% ± 0.25 100% ± 0.3 ANGLE: ± 3°		DWN: H. Iwashiro 9/1/96 CHK: T. Tanigawa 9/1/96 DWD: S. Kobayashi 11/96		STE TE Connectivity	
MATERIAL 材料 66ナイロン 66NYLON (UL94V-0)		FINISH 仕上げ 色: 表参照 COLOR: SEE TABLE		PRODUCT SPEC 108-5118		EI シリーズ コネクタ (電線対電線) EI SERISE CONNECTOR (Wire-to-Wire) フリーハンギングタイプ キャップハウジング FREE HANGING TYPE CAP HOUSING.	
WEIGHT		APPLICATION SPEC 114-5035		SIZE A3		CAGE CODE 00779	
CUSTOMER DRAWING				DRAWING NO. 172211		SCALE 実大 4-1	

参考 図面