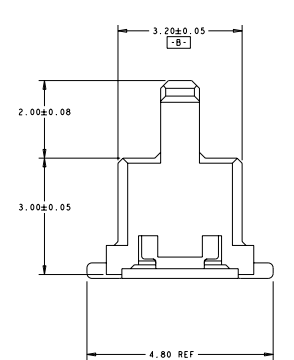


PC BOARD LAYOUT
 SCALE 30:1



REV	DATE	DESCRIPTION	BY	CHK	APP
00		REVISED PER ECO-11-005140			

- △ HOUSING MATERIAL: UL94 V-0 RATED LCP, COLOR: NATURAL.
- △ CONTACT MATERIAL: PHOS BRONZE
- △ BOARDLOCK MATERIAL: BRASS
- △ CONTACT PLATING: 0.75 μm MIN GOLD IN MATING AREA
0.13 μm - 0.20 μm GOLD IN SOLDER AREA
BOTH OVER 1.27 μm MIN NICKEL ON ENTIRE STOCK.
- △ BOARDLOCK PLATING: 3.8 μm MIN BRIGHT TIN/LEAD ON ENTIRE STOCK
OVER 1.27 μm MIN NICKEL ON ENTIRE STOCK.
- △ DATUMS ESTABLISHED BY CUSTOMER.
- △ BASIC DIMENSIONS ESTABLISHED BY CUSTOMER.
- △ NO TRACES ON EXTERNAL BOARD LAYER IN THIS AREA.
- △ BOARDLOCK PLATING: 3.8 μm MIN TIN ON ENTIRE STOCK
OVER 1.27 μm MIN NICKEL ON ENTIRE STOCK
- △ ROHS 2002/95/EC COMPLIANT.
- △ OBSOLETE PARTS: OBSOLETE CIS STREAMLINING PER D. RENAUD/D. SINISI

NO.	DESCRIPTION	QTY	REF	NO.	DESCRIPTION	QTY	REF
40	6-1375870-8			40	6-1375870-8		
38	6-1375870-7			38	6-1375870-7		
36	6-1375870-6			36	6-1375870-6		
34	6-1375870-5			34	6-1375870-5		
32	6-1375870-4			32	6-1375870-4		
30	6-1375870-3			30	6-1375870-3		
28	6-1375870-2			28	6-1375870-2		
26	6-1375870-1			26	6-1375870-1		
24	6-1375870-0			24	6-1375870-0		
22	5-1375870-9			22	5-1375870-9		
20	5-1375870-8			20	5-1375870-8		
18	5-1375870-7			18	5-1375870-7		
16	5-1375870-6			16	5-1375870-6		
14	5-1375870-5			14	5-1375870-5		
12	5-1375870-4			12	5-1375870-4		
10	5-1375870-3			10	5-1375870-3		
8	5-1375870-2			8	5-1375870-2		
6	5-1375870-1			6	5-1375870-1		
40	1-1375870-8			40	1-1375870-8		
38	1-1375870-7			38	1-1375870-7		
36	1-1375870-6			36	1-1375870-6		
34	1-1375870-5			34	1-1375870-5		
32	1-1375870-4			32	1-1375870-4		
30	1-1375870-3			30	1-1375870-3		
28	1-1375870-2			28	1-1375870-2		
26	1-1375870-1			26	1-1375870-1		
24	1-1375870-0			24	1-1375870-0		
22	1375870-9			22	1375870-9		
20	1375870-8			20	1375870-8		
18	1375870-7			18	1375870-7		
16	1375870-6			16	1375870-6		
14	1375870-5			14	1375870-5		
12	1375870-4			12	1375870-4		
10	1375870-3			10	1375870-3		
8	1375870-2			8	1375870-2		
6	1375870-1			6	1375870-1		

DIM S	DIM T	DIM U	DIM V	W REF	DIM X	DIM Y	Z	FINISH	NO. OF POS.	PART NUMBER
9.51	19.02	7.6	15.2	19.35	7.795	15.2	17.34			
9.11	18.22	7.2	14.4	18.55	7.395	14.4	16.54			
8.71	17.42	6.8	13.6	17.75	6.995	13.6	15.74			
8.31	16.62	6.4	12.8	16.95	6.595	12.8	14.94			
7.91	15.82	6.0	12.0	16.15	6.195	12.0	14.14			
7.51	15.02	5.6	11.2	15.35	5.795	11.2	13.34			
7.11	14.22	5.2	10.4	14.55	5.395	10.4	12.54			
6.71	13.42	4.8	9.6	13.75	4.995	9.6	11.74			
6.31	12.62	4.4	8.8	12.95	4.595	8.8	10.94			
5.91	11.82	4.0	8.0	12.15	4.195	8.0	10.14			
5.51	11.02	3.6	7.2	11.35	3.795	7.2	9.34			
5.11	10.22	3.2	6.4	10.55	3.395	6.4	8.54			
4.71	9.42	2.8	5.6	9.75	2.995	5.6	7.74			
4.31	8.62	2.4	4.8	8.95	2.595	4.8	6.94			
3.91	7.82	2.0	4.0	8.15	2.195	4.0	6.14			
3.51	7.02	1.6	3.2	7.35	1.795	3.2	5.34			
3.11	6.22	1.2	2.4	6.55	1.395	2.4	4.54			
2.71	5.42	0.8	1.6	5.75	0.995	1.6	3.74			
9.51	19.02	7.6	15.2	19.35	7.795	15.2	17.34			
9.11	18.22	7.2	14.4	18.55	7.395	14.4	16.54			
8.71	17.42	6.8	13.6	17.75	6.995	13.6	15.74			
8.31	16.62	6.4	12.8	16.95	6.595	12.8	14.94			
7.91	15.82	6.0	12.0	16.15	6.195	12.0	14.14			
7.51	15.02	5.6	11.2	15.35	5.795	11.2	13.34			
7.11	14.22	5.2	10.4	14.55	5.395	10.4	12.54			
6.71	13.42	4.8	9.6	13.75	4.995	9.6	11.74			
6.31	12.62	4.4	8.8	12.95	4.595	8.8	10.94			
5.91	11.82	4.0	8.0	12.15	4.195	8.0	10.14			
5.51	11.02	3.6	7.2	11.35	3.795	7.2	9.34			
5.11	10.22	3.2	6.4	10.55	3.395	6.4	8.54			
4.71	9.42	2.8	5.6	9.75	2.995	5.6	7.74			
4.31	8.62	2.4	4.8	8.95	2.595	4.8	6.94			
3.91	7.82	2.0	4.0	8.15	2.195	4.0	6.14			
3.51	7.02	1.6	3.2	7.35	1.795	3.2	5.34			
3.11	6.22	1.2	2.4	6.55	1.395	2.4	4.54			
2.71	5.42	0.8	1.6	5.75	0.995	1.6	3.74			