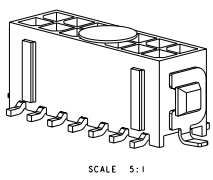
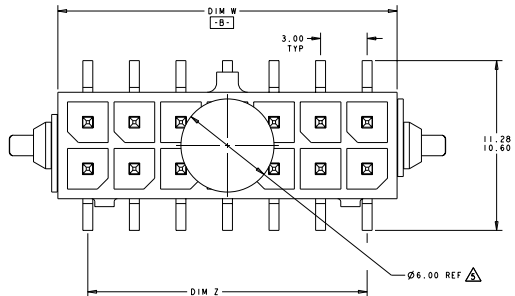
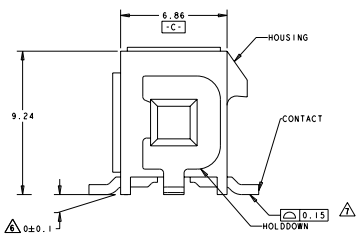
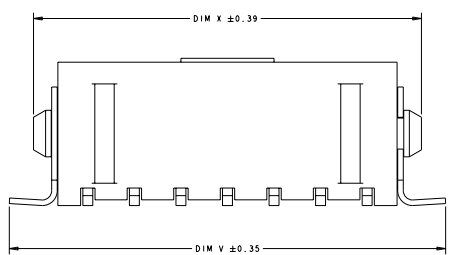


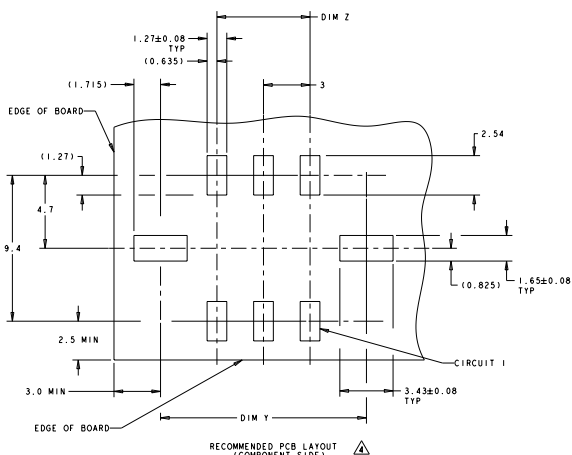
REV	DATE	DESCRIPTION	BY	CHK	APP
00	J1	REVISED PER ECO-11-005027			



- △ MATERIAL:
 CONTACTS - BRASS.
 HOUSING - UL 94V-0 RATED HIGH TEMP NYLON, COLOR: BLACK.
 HOLDDOWNS - PHOSPHOR BRONZE.
- △ PLATING:
 CONTACTS - 0.76µm MINIMUM GOLD OVER 2.54µm MINIMUM NICKEL ON MATING AREA. 2.54µm TIN LEAD MINIMUM OVER 2.54µm NICKEL MINIMUM ON SOLDER TAILS.
 HOLDDOWNS - 2.54µm TIN LEAD.
- △ RECOMMENDED PCB BOARD THICKNESS OF 1.57.
- △ KAPTON VACUUM PICK UP BUTTON.
- △ DIMENSION APPLIES TO SOLDER TAIL SURFACES AND STANDOFF SURFACES.
- △ ALL SOLDER TAILS AND HOLDDOWNS.
- △ PLATING:
 CONTACTS - 0.76µm MINIMUM GOLD OVER 2.54µm MINIMUM NICKEL ON MATING AREA. 2.54µm MATTE TIN MINIMUM OVER 2.54µm NICKEL MINIMUM ON SOLDER TAILS.
 HOLDDOWNS - 2.54µm MATTE TIN.



△	43.04	36.86	40.27	33.00	40.00	24	5-794638-4
△	40.04	33.86	37.27	31.00	37.00	22	5-794638-2
△	37.04	30.86	34.27	27.00	34.00	20	5-794638-0
△	34.04	27.86	31.27	24.00	31.00	18	4-794638-8
△	31.04	24.86	28.27	21.00	28.00	16	4-794638-6
△	28.04	21.86	25.27	18.00	25.00	14	4-794638-4
△	25.04	18.86	22.27	15.00	22.00	12	4-794638-2
△	22.04	15.86	19.27	12.00	19.00	10	4-794638-0
△	19.04	12.86	16.27	9.00	16.00	8	3-794638-8
△	16.04	9.86	13.27	6.00	13.00	6	3-794638-6
△	13.04	6.86	10.27	3.00	10.00	4	3-794638-4
△	10.04	3.86	7.27	-	7.00	2	3-794638-2
△	43.04	36.86	40.27	33.00	40.00	24	2-794638-4
△	40.04	33.86	37.27	30.00	37.00	22	2-794638-2
△	37.04	30.86	34.27	27.00	34.00	20	2-794638-0
△	34.04	27.86	31.27	24.00	31.00	18	1-794638-8
△	31.04	24.86	28.27	21.00	28.00	16	1-794638-6
△	28.04	21.86	25.27	18.00	25.00	14	1-794638-4
△	25.04	18.86	22.27	15.00	22.00	12	1-794638-2
△	22.04	15.86	19.27	12.00	19.00	10	1-794638-0
△	19.04	12.86	16.27	9.00	16.00	8	794638-8
△	16.04	9.86	13.27	6.00	13.00	6	794638-6
△	13.04	6.86	10.27	3.00	10.00	4	794638-4
△	10.04	3.86	7.27	-	7.00	2	794638-2



THIS DRAWING IS A CONTROLLED DOCUMENT. DATE: 19-MAR-2003

REVISED PER ECO-11-005027

TE Connectivity

SURFACE MOUNT, VERTICAL, SURFACE MOUNT
 HOLDDOWN ASSEMBLY, 30 GOLD HEADER,
 DUAL ROW, MICRO MATE 'N' LOCK (TR)

SEE TABLE

SCALE: 8:1