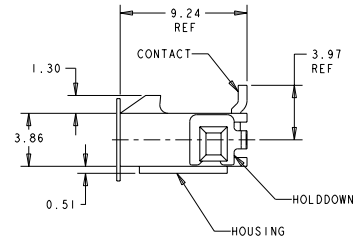
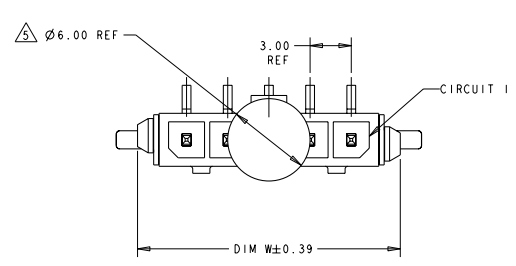
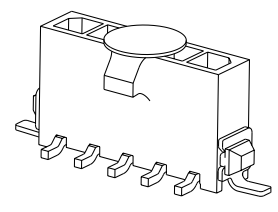
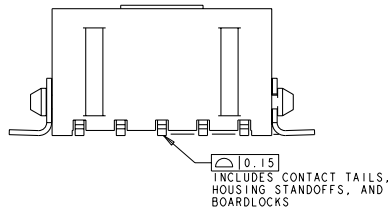


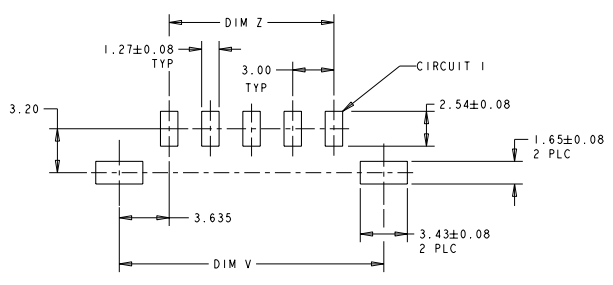
LOC	DISP	REV	DESCRIPTION	DATE	BY	APPD
CM	00	DI	REVISED PER ECO-11-005027	19MAR2011	RR	HMR



- △ MATERIAL: CONTACTS - BRASS
HOUSING - UL 94V-0 RATED HIGH TEMP NYLON, COLOR BLACK.
HOLD-DOWNS: - PHOSPHOR BRONZE.
- △ PLATING: CONTACTS - 0.76µm MINIMUM GOLD ON MATING END,
2.54µm MINIMUM TIN LEAD ON SOLDER TAILS, BOTH OVER
1.27µm MINIMUM NICKEL.
HOLD-DOWNS: 2.54µm MINIMUM TIN-LEAD OVER 1.27µm MINIMUM
NICKEL.
- △ RECOMMENDED PC BOARD THICKNESS OF 1.57.
- △ KAPTON VACUUM PICK UP BUTTON.
- △ PLATING: CONTACTS - 0.76µm MINIMUM GOLD ON MATING END,
2.54µm MINIMUM TIN ON SOLDER TAILS, BOTH OVER
1.27µm MINIMUM NICKEL.
HOLD-DOWNS: 2.54µm MINIMUM TIN OVER 1.27µm MINIMUM
NICKEL.



△	33.00	40.41	40.00	12	3-1445096-2
△	30.00	37.41	37.00	11	3-1445096-1
△	27.00	34.41	34.00	10	3-1445096-0
△	24.00	31.41	31.00	9	2-1445096-9
△	21.00	28.41	28.00	8	2-1445096-8
△	18.00	25.41	25.00	7	2-1445096-7
△	15.00	22.41	22.00	6	2-1445096-6
△	12.00	19.41	19.00	5	2-1445096-5
△	9.00	16.41	16.00	4	2-1445096-4
△	6.00	13.41	13.00	3	2-1445096-3
△	3.00	10.41	10.00	2	2-1445096-2
△	33.00	40.41	40.00	12	1-1445096-2
△	30.00	37.41	37.00	11	1-1445096-1
△	27.00	34.41	34.00	10	1-1445096-0
△	24.00	31.41	31.00	9	1445096-9
△	21.00	28.41	28.00	8	1445096-8
△	18.00	25.41	25.00	7	1445096-7
△	15.00	22.41	22.00	6	1445096-6
△	12.00	19.41	19.00	5	1445096-5
△	9.00	16.41	16.00	4	1445096-4
△	6.00	13.41	13.00	3	1445096-3
△	3.00	10.41	10.00	2	1445096-2



PCB LAYOUT COMPONENT SIDE △



THIS DRAWING IS A CONTROLLED DOCUMENT. DWG NO. 090CT2000
 AUTHORITY: J. ROOT
 DATE: 20-FEB-2001
 CHECKED: WHITFIELD
 DATE: 20-FEB-2001
 APPROVED: JONES
 DATE: 20-FEB-2001

TE Connectivity
TE
 VERTICAL SURFACE MOUNT HEADER ASSY.
 30 MIC GOLD CONTACTS, SURF MOUNT
 HOLD-DOWNS, SGL ROW, MICRO MATE-N-LOK™

PRODUCT SPEC: APPLICATION SPEC
 WEIGHT: -
 MATERIAL: -
 FINISH: -

SCALE: 5:1 SHEET 1 OF 1 REV D.1