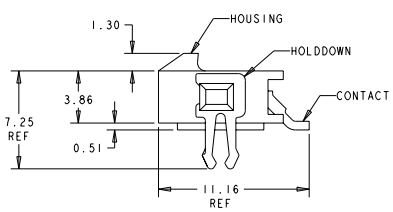
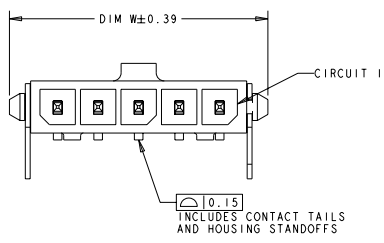
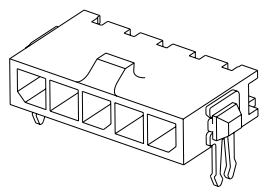
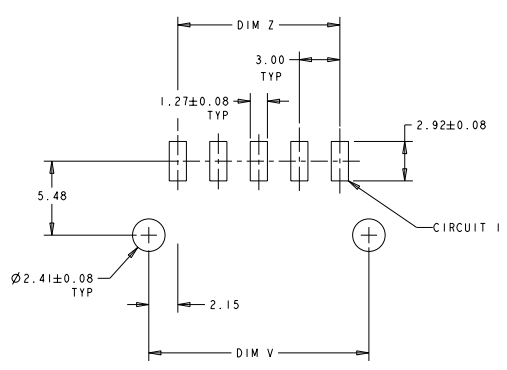
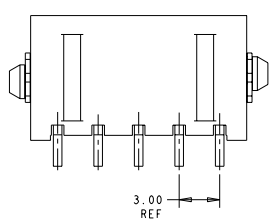


THIS DRAWING IS UNPUBLISHED. RELEASED FOR FABRICATION. BY AMP INCORPORATED. ALL RIGHTS RESERVED.

REV	DATE	BY	APPD
B	25-APR-05	KW	CJ



- △ MATERIAL: CONTACTS - BRASS  
HOUSING - UL 94V-0 RATED HIGH TEMP NYLON, COLOR BLACK.  
HOLDDOWNS: - PHOSPHOR BRONZE.
- △ PLATING: CONTACTS - 0.38µm MINIMUM GOLD ON MATING END,  
2.54µm MINIMUM TIN LEAD ON SOLDER TAILS, BOTH OVER  
1.27µm MINIMUM NICKEL.  
HOLDDOWNS: 2.54µm MINIMUM TIN-LEAD OVER 1.27µm MINIMUM  
NICKEL.
- △ RECOMMENDED PC BOARD THICKNESS OF 1.57.
- △ PLATING: CONTACTS - 0.38µm MINIMUM GOLD ON MATING END,  
2.54µm MINIMUM MATTE TIN ON SOLDER TAILS, BOTH OVER  
1.27µm MINIMUM NICKEL.  
HOLDDOWNS: 2.54µm MINIMUM MATTE TIN OVER 1.27µm MINIMUM  
NICKEL.



FINISH	DIM Z	DIM V	DIM W	NO. OF POSN	PART NUMBER
△	33.00	37.43	40.00	12	3-1445090-2
△	30.00	34.43	37.00	11	3-1445090-1
△	27.00	31.43	34.00	10	3-1445090-0
△	24.00	28.43	31.00	9	2-1445090-9
△	21.00	25.43	28.00	8	2-1445090-8
△	18.00	22.43	25.00	7	2-1445090-7
△	15.00	19.43	22.00	6	2-1445090-6
△	12.00	16.43	19.00	5	2-1445090-5
△	9.00	13.43	16.00	4	2-1445090-4
△	6.00	10.43	13.00	3	2-1445090-3
△	3.00	7.43	10.00	2	2-1445090-2
△	33.00	37.43	40.00	12	1-1445090-2
△	30.00	34.43	37.00	11	1-1445090-1
△	27.00	31.43	34.00	10	1-1445090-0
△	24.00	28.43	31.00	9	1445090-9
△	21.00	25.43	28.00	8	1445090-8
△	18.00	22.43	25.00	7	1445090-7
△	15.00	19.43	22.00	6	1445090-6
△	12.00	16.43	19.00	5	1445090-5
△	9.00	13.43	16.00	4	1445090-4
△	6.00	10.43	13.00	3	1445090-3
△	3.00	7.43	10.00	2	1445090-2



DIM I ROOT 090C12000 CM K WHITTAKER 17-APR-2001 APD C JONES 17-APR-2001		<b>AMP</b> Tyco Electronics Harrisburg, PA 17105-3608	
DIMENSIONS: (mm) 0 PLC 1 PLC 2 PLC 3 PLC 4 PLC		NAME: RIGHT ANGLE SURF MOUNT HEADER ASSY, 0.38 MIC GOLD CONTACTS, W/THRU HOLE HOLDDOWNS, SGL ROW, MICRO MATE-N-LOK™	
MATERIAL: SEE TABLE		SIZE: A2	CASE CODE: 00779
		DRAWING NO: ©-1445090	
		SCALE: 5:1 SHEET 1 OF 1 REV B	