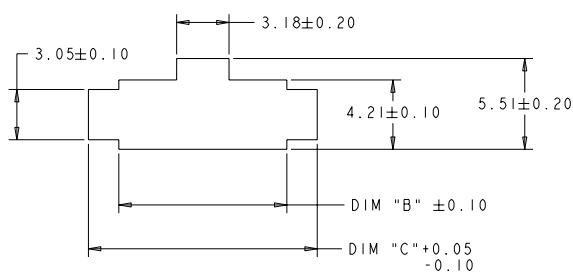
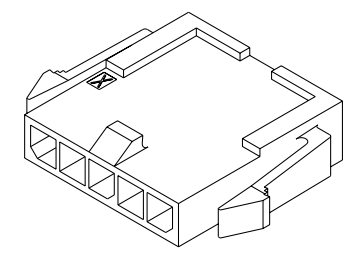
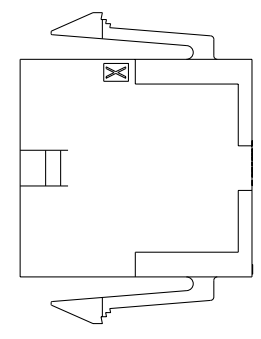


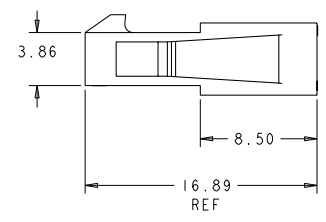
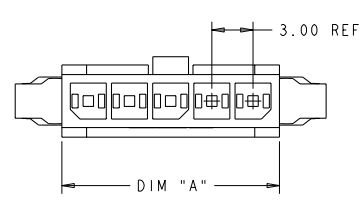
REVOLUTIONS		DATE	BY	APPV
P	LYA			
P	REVISED PER ECO-11-005294	06APR2011	RK	HMR



PANEL CUT-OUT \triangle



SCALE 5:1



40.88	37.20	36.85	12	1-1445048-2
37.88	34.20	33.85	11	1-1445048-1
34.88	31.20	30.85	10	1-1445048-0
31.88	28.20	27.85	9	1445048-9
28.88	25.20	24.85	8	1445048-8
25.88	22.20	21.85	7	1445048-7
22.88	19.20	18.85	6	1445048-6
19.88	16.20	15.85	5	1445048-5
16.88	13.20	12.85	4	1445048-4
13.88	10.20	9.85	3	1445048-3
10.88	7.20	6.85	2	1445048-2
DIM C	DIM B	DIM A	NO. OF POS.	PART NUMBER

- \triangle RECOMMENDED PANEL THICKNESS 1.57-2.3.
 2. PANEL MUST BE PUNCHED SO THAT HOUSING ENTERS THE PANEL IN THE SAME DIRECTION AS THE PUNCH.



THIS DRAWING IS A CONTROLLED DOCUMENT. DWG: W. J. RUDY 29AUG2000
 CHK: W. DAVIS 29AUG2000
 APPV: W. DAVIS 29AUG2000

TE TE Connectivity

PLUG HOUSING, 2 TO 12 POSITION SINGLE ROW, PANEL MOUNT MICRO MATE-N-LOK™

MATERIAL: NYLON, UL94V-0 BLACK
 FINISH: -
 WEIGHT: -
 CUSTOMER DRAWING

SHEET: A200779 CASE CODE: - DRAWING NO: -
 SCALE: 6:1 SHEET 1 OF 1 REV P