

4

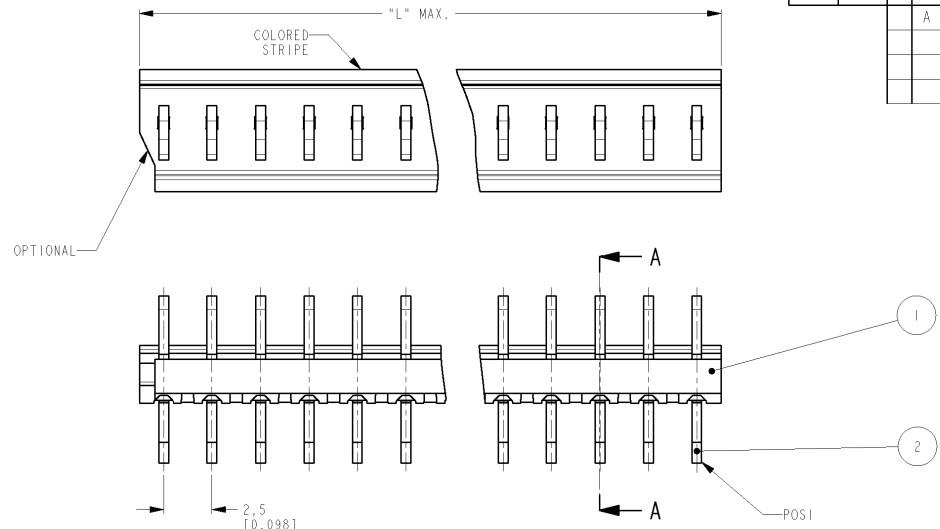
3

2

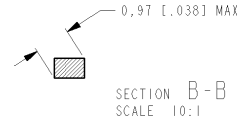
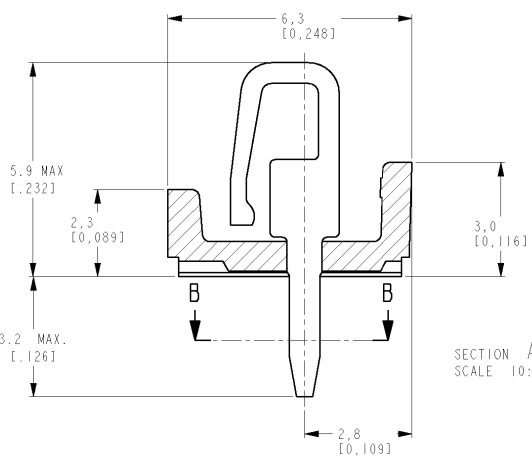
1

THIS DRAWING IS UNPUBLISHED. RELEASED FOR PUBLICATION
 BY TYCO ELECTRONICS CORPORATION. ALL RIGHTS RESERVED.

| LOC | DIST | REVISIONS | | | | |
|-----|------|------------------|-----------|-----|------|--|
| P | LTR | DESCRIPTION | DATE | DWN | APVD | |
| A | | ECN EH10 0344 05 | 09 MAR 05 | MG | MG | |



| PARTNUMBER | POS | "L" MAX | |
|-------------|-----|---------|-------|
| | | MM | INCH |
| 0-5161500-3 | 3 | 7.5 | .295 |
| 0-5161500-4 | 4 | 10.0 | .394 |
| 0-5161500-5 | 5 | 12.5 | .492 |
| 0-5161500-6 | 6 | 15.0 | .591 |
| 0-5161500-7 | 7 | 17.5 | .689 |
| 0-5161500-8 | 8 | 20.0 | .787 |
| 0-5161500-9 | 9 | 22.5 | .886 |
| 1-5161500-0 | 10 | 25.0 | .984 |
| 1-5161500-1 | 11 | 27.5 | 1.083 |
| 1-5161500-2 | 12 | 30.0 | 1.181 |
| 1-5161500-3 | 13 | 32.5 | 1.280 |
| 1-5161500-4 | 14 | 35.0 | 1.378 |
| 1-5161500-5 | 15 | 37.5 | 1.476 |
| 1-5161500-6 | 16 | 40.0 | 1.575 |
| 1-5161500-7 | 17 | 42.5 | 1.673 |
| 1-5161500-8 | 18 | 45.0 | 1.772 |
| 1-5161500-9 | 19 | 47.5 | 1.870 |
| 2-5161500-0 | 20 | 50.0 | 1.969 |



| DIMENSIONS: | | TOLERANCES UNLESS OTHERWISE SPECIFIED: | |
|-------------|---|--|--|
| mm (inch) | | | |
| 0 PLC | ± | ± | |
| 1 PLC | ± | ± | |
| 2 PLC | ± | ± | |
| 3 PLC | ± | ± | |
| 4 PLC | ± | ± | |
| ANGLES | | ± | |
| FINISH | | | |

| | | | |
|------------------|---------------|-------------------------|--------------------|
| 2 | CONTACT | PHOSPHORBRONZE | TIN OVER NICKEL |
| 1 | HOUSING | PBT 20% GF, COLOR GREEN | |
| ITEM NO. | DESCRIPTION | MATERIAL | FINISH |
| 09 MAR 05 | M. GOSSELINK | | |
| CH | M. GOSSELINK | | |
| APVD | E. F. J. JENS | | |
| PRODUCT SPEC | 108-19027 | | |
| APPLICATION SPEC | | | |
| SIZE | A3 | CAGE CODE | 00779 |
| DRAWING NO | G-5161500 | | RESTRICTED TO |
| WEIGHT | | | |
| CUSTOMER DRAWING | SCALE | 5:1 | SHEET 1 OF 1 REV A |

AMP 1470-19 REV 31MAR2000

Proj/ENGINEER DRAWING