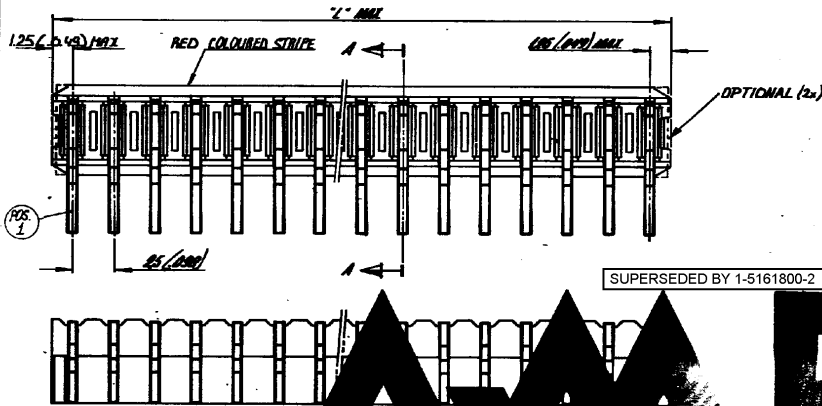


DRAWING MADE IN AMERICAN PROJECTION



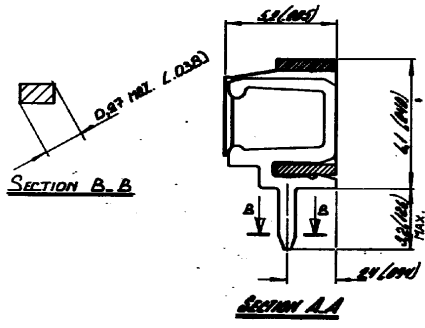
ORDER NUMBER	NUMBER OF PARTS/PIN	M.M.	"I" MAX	MMH
161800-2	2	5.0		.197
-	3	7.5		.296
-	4	10.0		.394
-	5	12.5		.493
-	6	15.0		.591
-	7	17.5		.690
-	8	20.0		.788
-	9	22.5		.886
-	10	25.0		.985
-	11	27.5		1.083
-	12	30.0		1.182
-	13	32.5		1.280
-	14	35.0		1.378
-	15	37.5		1.477
-	16	40.0		1.575
-	17	42.5		1.674
-	18	45.0		1.772
-	19	47.5		1.871
2-161800-3	20	50.0		1.969
2-161800-3	23	57.5		2.264
3-161800-4	21	52.5		2.067

SUPERSEDED BY 1-5161800-2

AMP

MATERIAL: HOUSING: P.B.T., 20% GLASS FILLED
CONTACT: 7H.B.R., TIN-LEAD (93/7) PLATED

OBsolete PARTS: OBSOLETE CIS STREAMLINING PER D.RENAUD/D.SINISI



DIMENSIONS IN P.I.N. DO NOT SCALE PRINT. DIMENSIONS IN MILLIMETERS (IN BRACKET)

H1	ECO-09-025273	16NOV09	KK	AEG
LTR	REVISION	DATE	DR	APVD

SEE TABLE	SEE RANGE	SEE RANGE
ORDER NO.	MATERIAL	PLATING
CUSTOMER COPY FOR REFERENCE ONLY		
DATE PVT 17-4-81	© 1981 BY AMP-HOLLAND N.V. ALL RIGHTS RESERVED AMP PRODUCTS COVERED BY PATENTS AND/OR PATENTS PENDING.	
DATE	SCALE	REV. USED
DATE	SCALE A7.5	REV. USED
DATE	SIZE B	REV. USED
DATE	NO C-161800	REV. USED
DATE	NO C-161800	REV. USED
DATE	NO C-161800	REV. USED



AMP-HOLLAND N.V.
's-Hertogenbosch

NOTE: DO NOT SCALE DIMENSIONS BASED ON DIMENSIONS CONNECTIONS. DIMENSIONS IN MILLIMETERS (IN BRACKET)