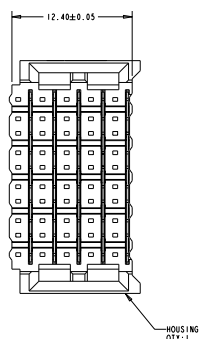
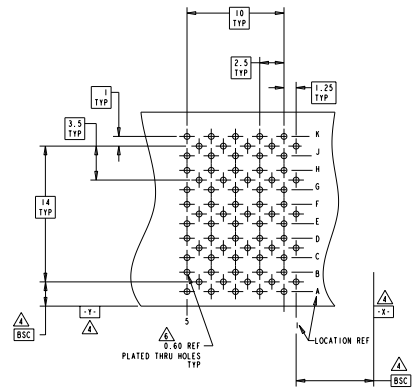


REV	DATE	DESCRIPTION	BY	CHK	APP
C		REVISED PER ECO-11-013132	13.06.2011	MMR	MM

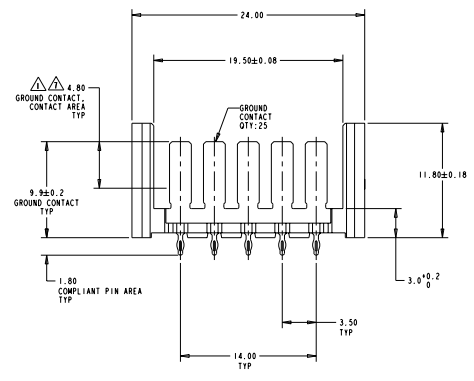
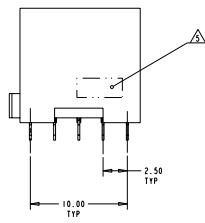
- △ CONTACT MATING AREA MEETS THE PERFORMANCE REQUIREMENTS OF TE CONNECTIVITY PRODUCT SPECIFICATION 108-1957; BASED ON TELCORDIA GR-1217-CORE; APPLICATIONS IN UNCONTROLLED ENVIRONMENTS.
- △ PHOSPHOR BRONZE
- △ GLASS FILLED POLYESTER
- △ DATUMS AND BASIC DIMENSIONS ESTABLISHED BY CUSTOMER
- △ CONNECTOR MARKED WITH PART NUMBER AND DATE CODE
- △ DRILLED HOLE DIAMETER 0.74±0.025
 FINISHED HOLE DIA 0.50±0.05 REF
 COPPER THICKNESS 0.025-0.050
 TIN LEAD THICKNESS 0.004-0.010
- △ CONTACT AREA LUBRICATED WITH BELLCORE APPROVED LUBRICATION
 TECHNICAL REFERENCE: GR-1217-CORE, ISSUE 1, NOVEMBER 1995



HOUSING
 QTY: 1



RECOMMENDED
 PRINTED CIRCUIT BOARD
 LAYOUT
 COMPONENT SIDE OF PRINTED CIRCUIT BOARD



120750-1
 PART NUMBER

THIS DRAWING IS A CONTROLLED DOCUMENT.		REV. NO.	11 JAN 95		TE Connectivity
REVISED BY:	WICKLEUC	30 JUN 95	30 JUN 95		SHROUD ASSEMBLY, 50 POSITION, 10 ROW, BACKPLANE CONNECTOR, Z-PACK HSS
REVISED BY:	WICKLEUC	30 JUN 95	30 JUN 95	STATE	SCALE CODE
REVISED BY:	WICKLEUC	30 JUN 95	30 JUN 95	00778	120750
REVISED BY:	WICKLEUC	30 JUN 95	30 JUN 95	00778	120750
REVISED BY:	WICKLEUC	30 JUN 95	30 JUN 95	00778	120750
REVISED BY:	WICKLEUC	30 JUN 95	30 JUN 95	00778	120750
REVISED BY:	WICKLEUC	30 JUN 95	30 JUN 95	00778	120750
REVISED BY:	WICKLEUC	30 JUN 95	30 JUN 95	00778	120750
REVISED BY:	WICKLEUC	30 JUN 95	30 JUN 95	00778	120750