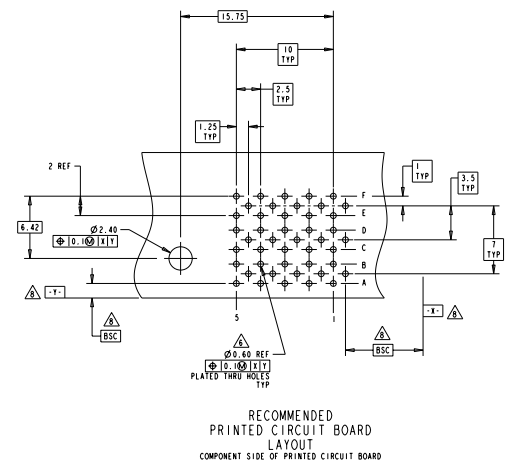
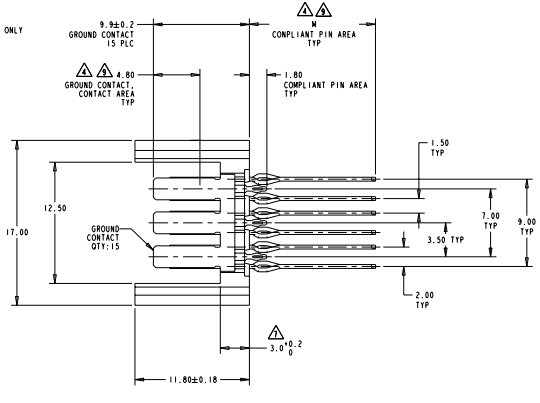
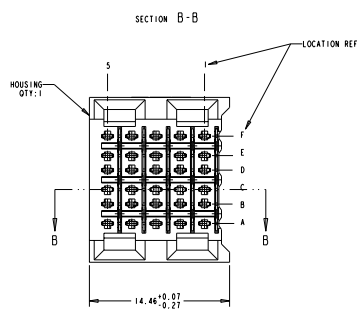
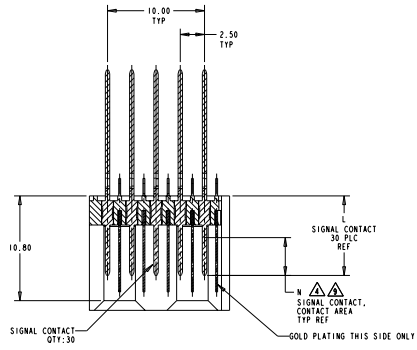


REVISED		REVISIONS		
REV	BY	DESCRIPTION	DATE	APP
H		REVISED PER ECO-11-013132	13Jun2011	MMR
AD	47			

- ▲ PHOSPHOR BRONZE
- ▲ LCP, UL94V-0
- ▲ CONTACT MATING AREA MEETS THE PERFORMANCE REQUIREMENTS OF TE CONNECTIVITY PRODUCT SPECIFICATION 100-1557, BASED ON TELCORDIA GR-1217-CORE, APPLICATIONS IN UNCONTROLLED ENVIRONMENTS.
- ▲ CONNECTOR MARKED WITH PART NUMBER AND DATE CODE
- ▲ REFERENCE APPLICATION SPEC 114-1302 FOR RECOMMENDED PLATED THRU HOLE DIAMETER AND PLATING THICKNESSES
- ▲ APPLICATION SEATING HEIGHT TO PRINTED CIRCUIT BOARD
- ▲ DATUMS AND BASIC DIMENSIONS ESTABLISHED BY CUSTOMER
- ▲ CONTACT AREA LUBRICATED WITH BELLCORE APPROVED LUBRICANT TECHNICAL REFERENCE: GR-1217-CORE, ISSUE 1, NOVEMBER 1995



5.30	14.50	9.7	120680-2
3.90	13.00	8.2	120680-1
N	M	L	PART NUMBER

THIS DRAWING IS A CONTROLLED DOCUMENT.

DATE:	3-24-99
REVISED:	3-24-99
BY:	
CHECKED:	
APPROVED:	

TE Connectivity

HEADER ASSEMBLY, 30 POSITION, FEED THROUGH, RIGHT HAND, 6 ROW, 2-PACK M35

SIZE: 120680-2
 PART NUMBER: 120680
 CUSTOMER DRAWING