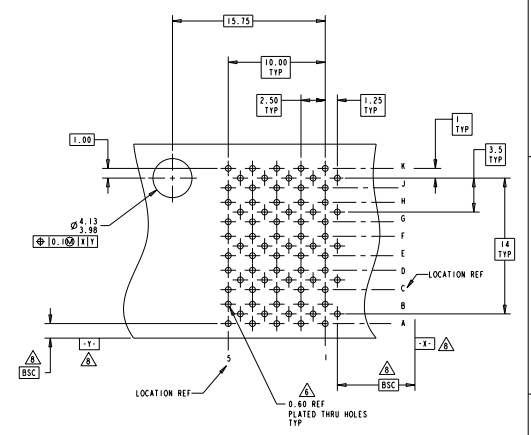
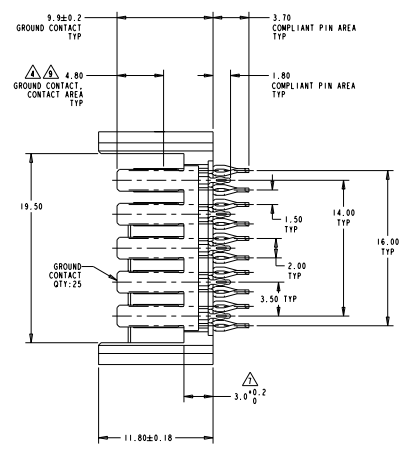
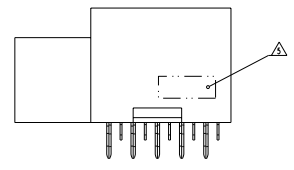
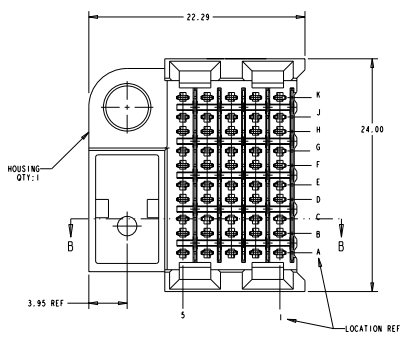
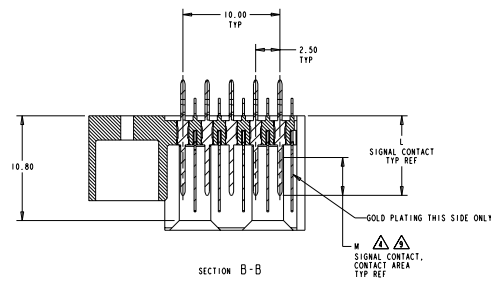


REV	DATE	DESCRIPTION	BY	CHK	APP
K		REVISED PER ECO-11013132			

- △ PHOSPHOR BRONZE
- △ LCP, UL94V-0
- △ CONTACT MATING AREA MEETS THE PERFORMANCE REQUIREMENTS OF THE CONNECTIVITY PRODUCT SPECIFICATION 100-1557, BASED ON TELCORDIA GR-1217-CORE, APPLICATIONS IN UNCONTROLLED ENVIRONMENTS.
- △ CONNECTOR MARKED WITH PART NUMBER AND DATE CODE
- △ REFERENCE APPLICATION SPEC 114-13020 FOR RECOMMENDED PLATED THRU HOLE DIAMETER AND PLATING THICKNESSES.
- △ APPLICATION SEATING HEIGHT TO PRINTED CIRCUIT BOARD
- △ DATUMS AND BASIC DIMENSIONS ESTABLISHED BY CUSTOMER
- △ CONTACT AREA LUBRICATED WITH BELLECORD APPROVED LUBRICANT TECHNICAL REFERENCE: GR-1217-CORE, ISSUE 1, NOVEMBER 1995
- △ OBSOLETE PARTS: OBSOLETE CIS STREAMLINING PER D.RENAUD/D.SINISI



RECOMMENDED PRINTED CIRCUIT BOARD LAYOUT
COMPONENT SIDE OF PRINTED CIRCUIT BOARD

OBsolete	5.30	9.7	120670-2
	3.90	8.2	120670-1
	M	L	PART NUMBER

THIS DRAWING IS A CONTROLLED DOCUMENT. REV. 001

DATE: 02/25/2015
 DRAWN BY: JIM ANDREWS
 CHECKED BY: JIM ANDREWS
 APPROVED BY: JIM ANDREWS

TE Connectivity
TE
 HEADER ASSEMBLY, 50 POSITION, RIGHT HAND, 10 ROW, 2-PACK, HS3

STATE: CA
 SCALE: 1:1
 DRAWING NO: 00779
 REV: 00
 CUSTOMER DRAWING

DATE: 02/25/2015
 DRAWN BY: JIM ANDREWS
 CHECKED BY: JIM ANDREWS
 APPROVED BY: JIM ANDREWS

DATE: 02/25/2015
 DRAWN BY: JIM ANDREWS
 CHECKED BY: JIM ANDREWS
 APPROVED BY: JIM ANDREWS