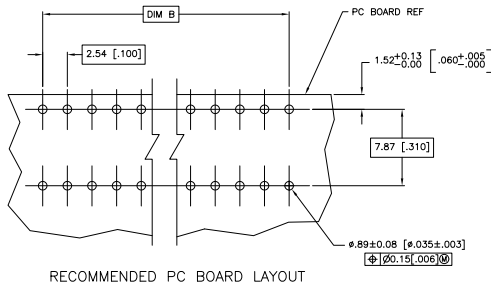
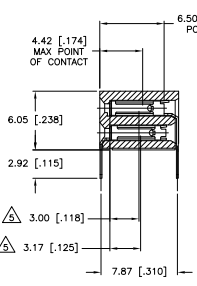
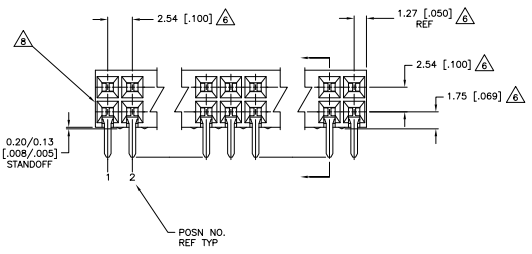
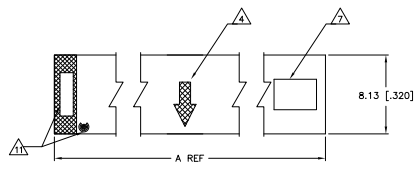


REV	DATE	DESCRIPTION	BY	CHK
AD	00			
Y2		REVISED PER ECO-10-02022		



- △ HOUSING MATERIAL: GLASS FILLED POLYESTER, COLOR- BLACK
- △ CONTACT MATERIAL: PHOSPHOR BRONZE
- △ CONTACT FINISH: 0.00254-0.00508[0.00100-0.00200] THK BRIGHT TIN-LEAD, ALL OVER 0.00127[0.00050] NICKEL, ENTIRE CONTACT
- △ MOLDED IN ARROW DESIGNATES THE MATING FACE OF THE CONNECTOR
- △ POINT OF MEASUREMENT FOR PLATING THICKNESS OF CONTACT AREA
- △ DATE CODE AND PART NUMBER MARKED IN APPROXIMATE LOCATION SHOWN.
- △ DIMENSIONS PERTAIN TO HOUSING CAVITY CENTERLINES
- △ ALTERNATE LOCATION FOR DATE CODE FOR 4 AND 6 POSITION.
- △ NO PART NUMBER MARKING REQUIRED FOR THIS PART.
- △ OBSOLETE PARTS: OBSOLETE CIS STREAMLINING PER D.RENAUD/D.SINISI
- △ TE LOGO AND CSA LOGO ARE MOLDED INTO HOUSING, THIS LOCATION.

REV	DATE	DESCRIPTION	BY	CHK
△	2.54 [0.100]	5.08 [2.00]	4	△ 6-102084-4
△	5.08 [2.00]	7.62 [3.00]	6	△ 6-102084-3
△	7.62 [3.00]	10.16 [4.00]	8	6-102084-2
△	10.16 [4.00]	12.70 [5.00]	10	6-102084-1
△	12.70 [5.00]	15.24 [6.00]	12	6-102084-0
△	15.24 [6.00]	17.78 [7.00]	14	5-102084-9
△	17.78 [7.00]	20.32 [8.00]	16	5-102084-8
△	20.32 [8.00]	22.86 [9.00]	18	5-102084-7
△	22.86 [9.00]	25.40 [1.00]	20	5-102084-6
△	25.40 [1.00]	27.94 [1.10]	22	5-102084-5
△	27.94 [1.10]	30.48 [1.20]	24	5-102084-4
△	30.48 [1.20]	33.02 [1.30]	26	5-102084-3
△	33.02 [1.30]	35.56 [1.40]	28	6-102084-2
△	35.56 [1.40]	38.10 [1.50]	30	5-102084-1
△	38.10 [1.50]	40.64 [1.60]	32	5-102084-0
△	40.64 [1.60]	43.18 [1.70]	34	4-102084-9
△	43.18 [1.70]	45.72 [1.80]	36	4-102084-8
△	45.72 [1.80]	48.26 [1.90]	38	4-102084-7
△	48.26 [1.90]	50.8 [2.00]	40	4-102084-6
△	50.8 [2.00]	53.34 [2.10]	42	4-102084-5
△	53.34 [2.10]	55.88 [2.20]	44	4-102084-4
△	55.88 [2.20]	58.42 [2.30]	46	4-102084-3
△	58.42 [2.30]	60.96 [2.40]	48	4-102084-2
△	60.96 [2.40]	63.50 [2.50]	50	4-102084-1
△	63.50 [2.50]	66.04 [2.60]	52	4-102084-0
△	66.04 [2.60]	68.58 [2.70]	54	3-102084-9
△	68.58 [2.70]	71.12 [2.80]	56	3-102084-8
△	71.12 [2.80]	73.66 [2.90]	58	3-102084-7
△	73.66 [2.90]	76.20 [3.00]	60	3-102084-6
△	76.20 [3.00]	78.74 [3.10]	62	3-102084-5
△	78.74 [3.10]	81.28 [3.20]	64	3-102084-4
△	81.28 [3.20]	83.82 [3.30]	66	3-102084-3
△	83.82 [3.30]	86.36 [3.40]	68	3-102084-2
△	86.36 [3.40]	88.90 [3.50]	70	3-102084-1
△	88.90 [3.50]	91.44 [3.60]	72	3-102084-0
△	91.44 [3.60]	93.98 [3.70]	74	2-102084-9
△	93.98 [3.70]	96.52 [3.80]	76	2-102084-8
△	96.52 [3.80]	99.06 [3.90]	78	2-102084-7
△	99.06 [3.90]	101.60 [4.00]	80	2-102084-6
△	101.60 [4.00]	104.14 [4.10]	82	2-102084-5
△	104.14 [4.10]	106.68 [4.20]	84	2-102084-4
△	106.68 [4.20]	109.22 [4.30]	86	2-102084-3
△	109.22 [4.30]	111.76 [4.40]	88	2-102084-2
△	111.76 [4.40]	114.30 [4.50]	90	2-102084-1
△	114.30 [4.50]	116.84 [4.60]	92	2-102084-0
△	116.84 [4.60]	119.38 [4.70]	94	1-102084-9
△	119.38 [4.70]	121.92 [4.80]	96	1-102084-8
△	121.92 [4.80]	124.46 [4.90]	98	1-102084-7
△	124.46 [4.90]	127.00 [5.00]	100	1-102084-6
△	127.00 [5.00]	129.54 [5.10]	102	1-102084-5
△	129.54 [5.10]	132.08 [5.20]	104	1-102084-4
△	132.08 [5.20]	134.62 [5.30]	106	1-102084-3
△	134.62 [5.30]	137.16 [5.40]	108	1-102084-2
△	137.16 [5.40]	139.70 [5.50]	110	1-102084-1
△	139.70 [5.50]	142.24 [5.60]	112	1-102084-0
△	142.24 [5.60]	144.78 [5.70]	114	102084-9
△	144.78 [5.70]	147.32 [5.80]	116	102084-8
△	147.32 [5.80]	149.86 [5.90]	118	102084-7
△	149.86 [5.90]	152.40 [6.00]	120	102084-6
△	152.40 [6.00]	154.94 [6.10]	122	102084-5
△	154.94 [6.10]	157.48 [6.20]	124	102084-4
△	157.48 [6.20]	160.02 [6.30]	126	102084-3
△	160.02 [6.30]	162.56 [6.40]	128	102084-2
△	162.56 [6.40]	165.10 [6.50]	130	102084-1

THIS DRAWING IS A CONTROLLED DOCUMENT.

DESIGNED BY: J. ALSON
 DRAWN BY: J. ALSON
 CHECKED BY: J. ALSON
 APPROVED BY: J. ALSON

DATE CODE: A1
 PART NUMBER: 100779
 CUSTOMER DRAWING

NO. OF POSN: 130
 ASSEMBLY PART NUMBER: 102084-1