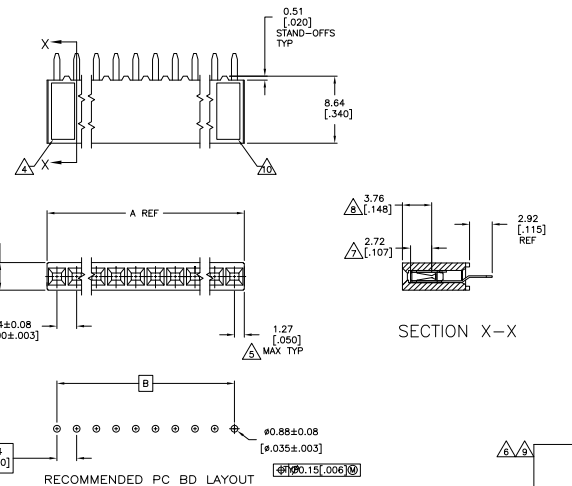


THIS DRAWING IS UNAPPROVED  
 ALL RIGHTS RESERVED

REV. NO.		DATE	DESCRIPTION	BY	CHK	APP
AD	00					
R3			REVISED PER ECD-11-004587			



NO	B	A	NO OF POSN	PART NUMBER
2.54	1.100	5.08	2	6-534237-9
99.06	3.900	101.60	40	6-534237-8
96.52	3.800	99.06	39	6-534237-7
93.98	3.700	96.52	38	6-534237-6
91.44	3.600	93.98	37	6-534237-5
88.90	3.500	91.44	36	6-534237-4
86.36	3.400	88.90	35	6-534237-3
83.82	3.300	86.36	34	6-534237-2
81.28	3.200	83.82	33	6-534237-1
78.74	3.100	81.28	32	6-534237-0
76.20	3.000	78.74	31	7-534237-9
73.66	2.900	76.20	30	7-534237-8
71.12	2.800	73.66	29	7-534237-7
68.58	2.700	71.12	28	7-534237-6
66.04	2.600	68.58	27	7-534237-5
63.50	2.500	66.04	26	7-534237-4
60.96	2.400	63.50	25	7-534237-3
58.42	2.300	60.96	24	7-534237-2
55.88	2.200	58.42	23	7-534237-1
53.34	2.100	55.88	22	7-534237-0
50.80	2.000	53.34	21	6-534237-9
48.26	1.900	50.80	20	6-534237-8
45.72	1.800	48.26	19	6-534237-7
43.18	1.700	45.72	18	6-534237-6
40.64	1.600	43.18	17	6-534237-5
38.10	1.500	40.64	16	6-534237-4
35.56	1.400	38.10	15	6-534237-3
33.02	1.300	35.56	14	6-534237-2
30.48	1.200	33.02	13	6-534237-1
27.94	1.100	30.48	12	6-534237-0
25.40	1.000	27.94	11	5-534237-9
22.86	0.900	25.40	10	5-534237-8
20.32	0.800	22.86	9	5-534237-7
17.78	0.700	20.32	8	5-534237-6
15.24	0.600	17.78	7	5-534237-5
12.70	0.500	15.24	6	5-534237-4
10.16	0.400	12.70	5	5-534237-3
7.62	0.300	10.16	4	5-534237-2
5.08	0.200	7.62	3	5-534237-1

NO	B	A	NO OF POSN	PART NUMBER
2.54	1.100	5.08	2	6-534237-9
99.06	3.900	101.60	40	6-534237-8
96.52	3.800	99.06	39	6-534237-7
93.98	3.700	96.52	38	6-534237-6
91.44	3.600	93.98	37	6-534237-5
88.90	3.500	91.44	36	6-534237-4
86.36	3.400	88.90	35	6-534237-3
83.82	3.300	86.36	34	6-534237-2
81.28	3.200	83.82	33	6-534237-1
78.74	3.100	81.28	32	6-534237-0
76.20	3.000	78.74	31	7-534237-9
73.66	2.900	76.20	30	7-534237-8
71.12	2.800	73.66	29	7-534237-7
68.58	2.700	71.12	28	7-534237-6
66.04	2.600	68.58	27	7-534237-5
63.50	2.500	66.04	26	7-534237-4
60.96	2.400	63.50	25	7-534237-3
58.42	2.300	60.96	24	7-534237-2
55.88	2.200	58.42	23	7-534237-1
53.34	2.100	55.88	22	7-534237-0
50.80	2.000	53.34	21	6-534237-9
48.26	1.900	50.80	20	6-534237-8
45.72	1.800	48.26	19	6-534237-7
43.18	1.700	45.72	18	6-534237-6
40.64	1.600	43.18	17	6-534237-5
38.10	1.500	40.64	16	6-534237-4
35.56	1.400	38.10	15	6-534237-3
33.02	1.300	35.56	14	6-534237-2
30.48	1.200	33.02	13	6-534237-1
27.94	1.100	30.48	12	6-534237-0
25.40	1.000	27.94	11	5-534237-9
22.86	0.900	25.40	10	5-534237-8
20.32	0.800	22.86	9	5-534237-7
17.78	0.700	20.32	8	5-534237-6
15.24	0.600	17.78	7	5-534237-5
12.70	0.500	15.24	6	5-534237-4
10.16	0.400	12.70	5	5-534237-3
7.62	0.300	10.16	4	5-534237-2
5.08	0.200	7.62	3	5-534237-1

- △ HOUSING: FLAME RETARDANT, GLASS FILLED, POLYESTER, COLOR: BLACK.
- △ CONTACT: PHOSPHOR BRONZE
- △ CONTACT: DUPLEX PLATED 0.76µm[.000030] GOLD IN CONTACT AREA, 3.81-7.62µm[.000150-.000300] BRIGHT TIN-LEAD ON LEADS ALL OVER 1.27µm[.000050] MIN NICKEL
- △ THESE DIMENSIONS PERTAIN TO CAVITY CENTERLINES ONLY - NOT TO CONTACT LOCATIONS
- △ PART NUMBER AND DATE CODE MARKED IN APPROXIMATE LOCATION SHOWN.
- △ TOLERANCE IS NON-CUMULATIVE.
- △ Z POSITION DATE CODE IS MARKED OPPOSITE SIDE OF THE CONNECTIVITY LOGO.
- △ POINT-OF-MEASUREMENT DIMENSION FOR PLATING THICKNESS (INSIDE CONTACT BEAM).
- △ POINT-OF-CONTACT DIMENSION.
- △ NO PART NUMBER MARKING REQUIRED FOR THIS PART.
- △ THE CONNECTIVITY LOGO AND CSA LOGO ARE MOLDED INTO HOUSING, THIS LOCATION.
- △ CONTACT: DUPLEX PLATED 0.76µm[.000030] GOLD IN CONTACT AREA, 3.81-7.62µm[.000150-.000300] MATTE TIN ON LEADS ALL OVER 1.27µm[.000050] MIN NICKEL
- △ ROHS 2002/95/EC COMPLIANT
- △ OBSOLETE PARTS: OBSOLETE CIS STREAMLINING PER D.RENAUD/D.SINISI
- △ OBSOLETE.

THIS DRAWING IS A CONTROLLED DOCUMENT.

UNLESS OTHERWISE SPECIFIED, ALL DIMENSIONS ARE IN MILLIMETERS.

TE Connectivity

RECPT ASSY, MOD IV, SINGLE ROW, 100CL, VERTICAL BOARD MOUNT, CLOSED, TOP ENTRY, SHORT PWT. OF CONTACT

114-25018

108-25022

114-25018

100779

4:1