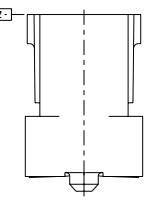
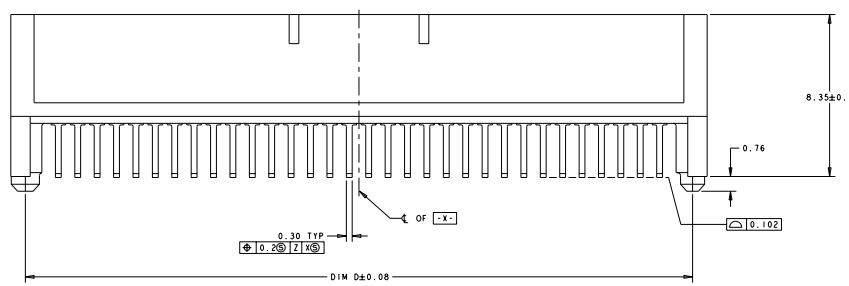
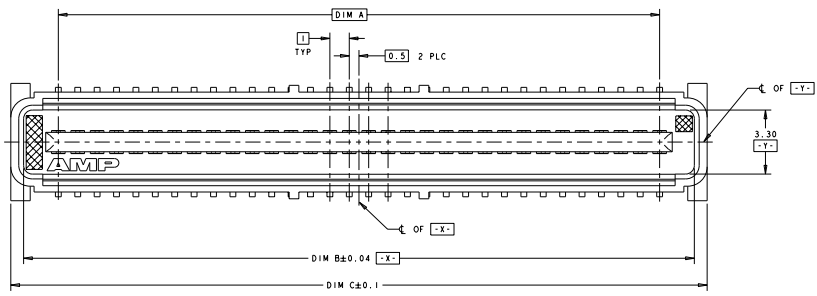
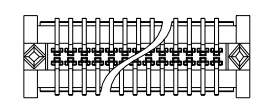


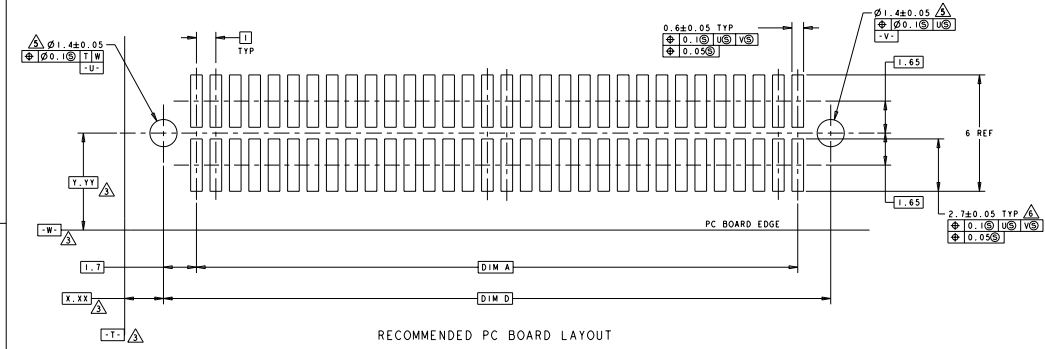
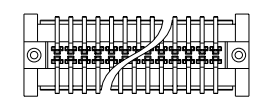
| REV | DATE | DESCRIPTION | BY | CHK | APP |
|-----|------|---------------------------|----|-----|-----|
| AD | 00 | | | | |
| A2 | | REVISED PER ECO-11-004835 | | | |



STYLE A POSTS



STYLE B POSTS



RECOMMENDED PC BOARD LAYOUT

- △ HOUSING MATERIAL: LIQUID CRYSTAL POLYMER. COLOR: BLACK.
CONTACT MATERIAL: PHOSPHOR BRONZE.
- △ CONTACT FINISH: NICKEL UNDERPLATE ALL OVER. MATING SURFACES PLATED TO MEET PL-1 PERFORMANCE REQUIREMENTS OF INDUSTRY SPECIFICATION EIA-700AAAB. SOLDER TAILS PLATED TIN.
- △ DATUM LOCATIONS AND BASIC DIMENSIONS TO BE ESTABLISHED BY THE CUSTOMER. CONSULT AMP ENGINEERING WHEN PLACING MULTIPLE CONNECTORS ON A PC BOARD.
- 4. PACKAGED IN TAPE ON REELS PER EIA-841.
- △ 1.5 MIN DIAMETER HOLE SHOULD BE USED IF USING POST STYLE "A" AND PLACING ON PCB WITH VACUUM PLACEMENT EQUIPMENT.
- △ SHORTER SOLDER LANDS MAY BE USED PER EIA 700AAAB, HOWEVER 2.7 LENGTH ASSURES OPTIMUM SOLDER FILLET.
- △ CONTACT FINISH: 0.00381 MINIMUM MATTE TIN PER ASTM B 545 ON SOLDER AREA, 0.00127 MINIMUM GOLD PER ASTM B 488 ON MATING AREA, BOTH OVER 0.00127 MINIMUM NICKEL PER SAE-AMS-QQ-N-290 ON ENTIRE CONTACT.
- △ SQUARE AND DIAMOND SHAPED POSTS
- △ ROUND SHAPED POSTS

| POST STYLE | FINISH | DIM D | DIM C | DIM B | DIM A | STACK HGTS | POS | PART NO |
|------------|--------|-------|-------|-------|-------|----------------|-----|-------------|
| △ | △ | 44.4 | 45.9 | 44.58 | 41 | 10, 12, 13, 15 | 84 | 3-5120527-2 |
| △ | △ | 34.4 | 35.9 | 34.58 | 31 | 10, 12, 13, 15 | 64 | 3-5120527-1 |
| △ | △ | 44.4 | 45.9 | 44.58 | 41 | 10, 12, 13, 15 | 84 | 2-5120527-2 |
| △ | △ | 34.4 | 35.9 | 34.58 | 31 | 10, 12, 13, 15 | 64 | 2-5120527-1 |
| △ | △ | 44.4 | 45.9 | 44.58 | 41 | 10, 12, 13, 15 | 84 | 1-5120527-2 |
| △ | △ | 34.4 | 35.9 | 34.58 | 31 | 10, 12, 13, 15 | 64 | 1-5120527-1 |
| △ | △ | 44.4 | 45.9 | 44.58 | 41 | 10, 12, 13, 15 | 84 | 5120527-2 |
| △ | △ | 34.4 | 35.9 | 34.58 | 31 | 10, 12, 13, 15 | 64 | 5120527-1 |

THIS DRAWING IS A CONTROLLED DOCUMENT.

DATE: 03SEP84
 BY: MRS12
 CHECKED: MRS12
 APPROVED: MRS12

TE Connectivity
TE
 PLUG ASSY, 1.0mm FH (IEEE 1386) CONNECTOR

STATE CASE CODE (SEE DRAWING NO): A 00779 © 5120527

CUSTOMER DRAWING