

4

3

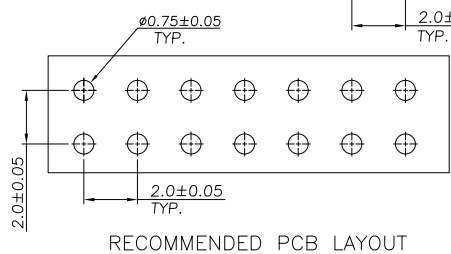
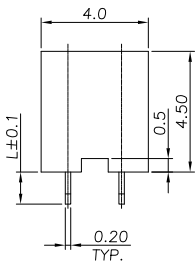
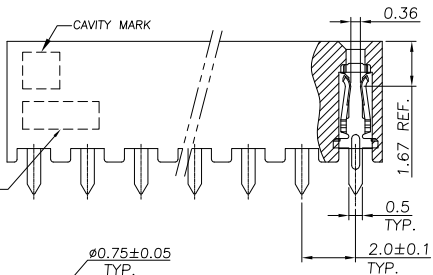
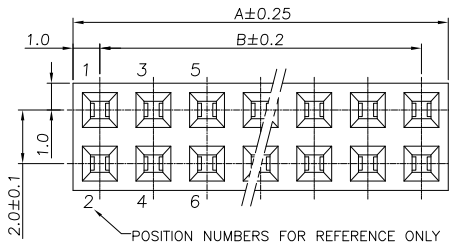
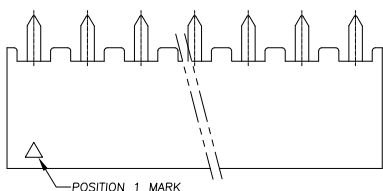
2

1

THIS DRAWING IS UNPUBLISHED. RELEASED FOR PUBLICATION MAR. 2006. ALL RIGHTS RESERVED.

LOC	DIST	REVISIONS			
P	LTR	DESCRIPTION	DATE	DWN	APVD
B		RELEASED AS PER ECR-09-017658	06AUG09	SRE	PCH
B1		ECR-10-026537	21JAN11	KK	HMR

- NOTE:
- MATERIAL:**  
HOUSING : THERMOPLASTIC, UL94V-0, BLACK COLOR.  
CONTACT : PHOSPHOR BRASS, THICKNESS=0.20mm.
  - FINISH:**  
CONTACT : GOLD PLATED (SEE TABLE) ON CONTACT AREA  
80µ" MIN. MATTE TIN PLATED ON SOLDERTAILS,  
50µ" MIN. NICKEL UNDERPLATED ALL OVER
  - APPLICATION:**  
SOLDERTAIL LENGTH 2.6 FOR PCB THICKNESS 1.0 MAX.  
1.2 FOR PCB THICKNESS 0.3 MAX.
  - WAVE SOLDER CAPABLE TO 265°C PER TE SPEC 109-202, CONDITION B**
  - QUALIFICATION TEST REPORT: 501-57197**



SOLD PLATE THICKNESS	"L"	KEYING POS.	A	B	POS	PART NUMBER	SOLD PLATE THICKNESS	"L"	KEYING POS.	A	B	POS	PART NUMBER		
OBsolete		6	40	36	40	19				6	40	36	40	4	19
OBsolete			50	48	50	9					50	48	50	4	9
OBsolete			48	46	48	9					48	46	48	4	9
OBsolete			46	44	46	9					46	44	46	4	9
OBsolete			44	42	44	9					44	42	44	4	9
OBsolete			42	40	42	9					42	40	42	4	9
OBsolete			40	38	40	9					40	38	40	4	9
OBsolete			38	36	38	9					38	36	38	4	9
OBsolete			36	34	36	9					36	34	36	4	9
OBsolete			34	32	34	9					34	32	34	4	9
OBsolete			32	30	32	9					32	30	32	3	9
OBsolete			30	28	30	8					30	28	30	3	8
OBsolete			28	26	28	8					28	26	28	3	8
OBsolete			26	24	26	8					26	24	26	3	8
OBsolete			24	22	24	8					24	22	24	3	8
OBsolete			22	20	22	8					22	20	22	3	8
OBsolete			20	18	20	8					20	18	20	3	8
OBsolete			18	16	18	8					18	16	18	3	8
OBsolete			16	14	16	8					16	14	16	3	8
OBsolete			14	12	14	8					14	12	14	3	8
OBsolete			12	10	12	7					12	10	12	2	7
OBsolete			10	8	10	7					10	8	10	2	7
OBsolete			8	6	8	7					8	6	8	2	7
OBsolete			6	4	6	7					6	4	6	2	7
OBsolete			4	2	4	6					4	2	4	2	6
OBsolete			50	48	50	7					50	48	50	2	7
OBsolete			48	46	48	7					48	46	48	2	7
OBsolete			46	44	46	7					46	44	46	2	7
OBsolete			44	42	44	7					44	42	44	2	7
OBsolete			42	40	42	7					42	40	42	2	7
OBsolete			40	38	40	6					40	38	40	1	6
OBsolete			38	36	38	6					38	36	38	1	6
OBsolete			36	34	36	6					36	34	36	1	6
OBsolete			34	32	34	6					34	32	34	1	6
OBsolete			32	30	32	6					32	30	32	1	6
OBsolete			30	28	30	6					30	28	30	1	6
OBsolete			28	26	28	6					28	26	28	1	6
OBsolete			26	24	26	6					26	24	26	1	6
OBsolete			24	22	24	6					24	22	24	1	6
OBsolete			22	20	22	6					22	20	22	1	6
OBsolete			20	18	20	6					20	18	20	1	6
OBsolete			18	16	18	6					18	16	18	1	6
OBsolete			16	14	16	6					16	14	16	1	6
OBsolete			14	12	14	6					14	12	14	1	6
OBsolete			12	10	12	5					12	10	12	1	5
OBsolete			10	8	10	5					10	8	10	1	5
OBsolete			8	6	8	5					8	6	8	1	5
OBsolete			6	4	6	5					6	4	6	1	5
OBsolete			4	2	4	5					4	2	4	1	5

THIS DRAWING IS A CONTROLLED DOCUMENT.

TE Connectivity

AMPMODU 2.0mm PITCH, REC CONN, VERTICAL, MOUNT TYPE

108-57197

SCALE 1:1 SHEET 1 of 2 REV B1

4

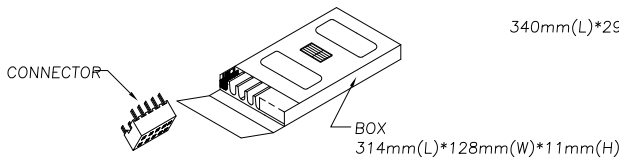
3

2

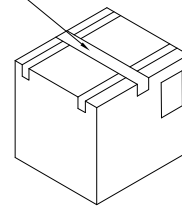
1

THIS DRAWING IS UNPUBLISHED. RELEASED FOR PUBLICATION MAR. 2006.  
 COPYRIGHT 2009 By - ALL RIGHTS RESERVED.

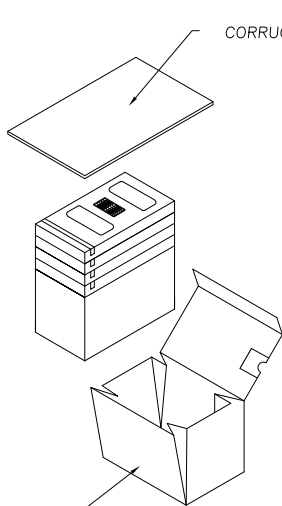
LOC	DIST	P	LTR	DESCRIPTION	DATE	DWN	APVD
IR	-	-	-	SEE SHEET 1	-	-	-



OUTER CARTON  
 340mm(L)\*295mm(W)\*320mm(H)



CORRUGATE PAPER



INNER CARTON  
 320mm(L)\*138mm(W)\*144mm(H)

REV	DATE	DESCRIPTION	BY	CHK	APPV
1	2006-03-23	NEW	O.HU	S.HDU	W.J.KE
2	2006-03-23	REVISED	O.HU	S.HDU	W.J.KE
3	2006-03-23	REVISED	O.HU	S.HDU	W.J.KE
4	2006-03-23	REVISED	O.HU	S.HDU	W.J.KE
5	2006-03-23	REVISED	O.HU	S.HDU	W.J.KE
6	2006-03-23	REVISED	O.HU	S.HDU	W.J.KE
7	2006-03-23	REVISED	O.HU	S.HDU	W.J.KE
8	2006-03-23	REVISED	O.HU	S.HDU	W.J.KE
9	2006-03-23	REVISED	O.HU	S.HDU	W.J.KE
10	2006-03-23	REVISED	O.HU	S.HDU	W.J.KE
11	2006-03-23	REVISED	O.HU	S.HDU	W.J.KE
12	2006-03-23	REVISED	O.HU	S.HDU	W.J.KE
13	2006-03-23	REVISED	O.HU	S.HDU	W.J.KE
14	2006-03-23	REVISED	O.HU	S.HDU	W.J.KE
15	2006-03-23	REVISED	O.HU	S.HDU	W.J.KE
16	2006-03-23	REVISED	O.HU	S.HDU	W.J.KE
17	2006-03-23	REVISED	O.HU	S.HDU	W.J.KE
18	2006-03-23	REVISED	O.HU	S.HDU	W.J.KE
19	2006-03-23	REVISED	O.HU	S.HDU	W.J.KE
20	2006-03-23	REVISED	O.HU	S.HDU	W.J.KE
21	2006-03-23	REVISED	O.HU	S.HDU	W.J.KE
22	2006-03-23	REVISED	O.HU	S.HDU	W.J.KE
23	2006-03-23	REVISED	O.HU	S.HDU	W.J.KE
24	2006-03-23	REVISED	O.HU	S.HDU	W.J.KE
25	2006-03-23	REVISED	O.HU	S.HDU	W.J.KE
26	2006-03-23	REVISED	O.HU	S.HDU	W.J.KE
27	2006-03-23	REVISED	O.HU	S.HDU	W.J.KE
28	2006-03-23	REVISED	O.HU	S.HDU	W.J.KE
29	2006-03-23	REVISED	O.HU	S.HDU	W.J.KE
30	2006-03-23	REVISED	O.HU	S.HDU	W.J.KE
31	2006-03-23	REVISED	O.HU	S.HDU	W.J.KE
32	2006-03-23	REVISED	O.HU	S.HDU	W.J.KE
33	2006-03-23	REVISED	O.HU	S.HDU	W.J.KE
34	2006-03-23	REVISED	O.HU	S.HDU	W.J.KE
35	2006-03-23	REVISED	O.HU	S.HDU	W.J.KE
36	2006-03-23	REVISED	O.HU	S.HDU	W.J.KE
37	2006-03-23	REVISED	O.HU	S.HDU	W.J.KE
38	2006-03-23	REVISED	O.HU	S.HDU	W.J.KE
39	2006-03-23	REVISED	O.HU	S.HDU	W.J.KE
40	2006-03-23	REVISED	O.HU	S.HDU	W.J.KE
41	2006-03-23	REVISED	O.HU	S.HDU	W.J.KE
42	2006-03-23	REVISED	O.HU	S.HDU	W.J.KE
43	2006-03-23	REVISED	O.HU	S.HDU	W.J.KE
44	2006-03-23	REVISED	O.HU	S.HDU	W.J.KE
45	2006-03-23	REVISED	O.HU	S.HDU	W.J.KE
46	2006-03-23	REVISED	O.HU	S.HDU	W.J.KE
47	2006-03-23	REVISED	O.HU	S.HDU	W.J.KE
48	2006-03-23	REVISED	O.HU	S.HDU	W.J.KE
49	2006-03-23	REVISED	O.HU	S.HDU	W.J.KE
50	2006-03-23	REVISED	O.HU	S.HDU	W.J.KE
51	2006-03-23	REVISED	O.HU	S.HDU	W.J.KE
52	2006-03-23	REVISED	O.HU	S.HDU	W.J.KE
53	2006-03-23	REVISED	O.HU	S.HDU	W.J.KE
54	2006-03-23	REVISED	O.HU	S.HDU	W.J.KE
55	2006-03-23	REVISED	O.HU	S.HDU	W.J.KE
56	2006-03-23	REVISED	O.HU	S.HDU	W.J.KE
57	2006-03-23	REVISED	O.HU	S.HDU	W.J.KE
58	2006-03-23	REVISED	O.HU	S.HDU	W.J.KE
59	2006-03-23	REVISED	O.HU	S.HDU	W.J.KE
60	2006-03-23	REVISED	O.HU	S.HDU	W.J.KE
61	2006-03-23	REVISED	O.HU	S.HDU	W.J.KE
62	2006-03-23	REVISED	O.HU	S.HDU	W.J.KE
63	2006-03-23	REVISED	O.HU	S.HDU	W.J.KE
64	2006-03-23	REVISED	O.HU	S.HDU	W.J.KE
65	2006-03-23	REVISED	O.HU	S.HDU	W.J.KE
66	2006-03-23	REVISED	O.HU	S.HDU	W.J.KE
67	2006-03-23	REVISED	O.HU	S.HDU	W.J.KE
68	2006-03-23	REVISED	O.HU	S.HDU	W.J.KE
69	2006-03-23	REVISED	O.HU	S.HDU	W.J.KE
70	2006-03-23	REVISED	O.HU	S.HDU	W.J.KE
71	2006-03-23	REVISED	O.HU	S.HDU	W.J.KE
72	2006-03-23	REVISED	O.HU	S.HDU	W.J.KE
73	2006-03-23	REVISED	O.HU	S.HDU	W.J.KE
74	2006-03-23	REVISED	O.HU	S.HDU	W.J.KE
75	2006-03-23	REVISED	O.HU	S.HDU	W.J.KE
76	2006-03-23	REVISED	O.HU	S.HDU	W.J.KE
77	2006-03-23	REVISED	O.HU	S.HDU	W.J.KE
78	2006-03-23	REVISED	O.HU	S.HDU	W.J.KE
79	2006-03-23	REVISED	O.HU	S.HDU	W.J.KE
80	2006-03-23	REVISED	O.HU	S.HDU	W.J.KE
81	2006-03-23	REVISED	O.HU	S.HDU	W.J.KE
82	2006-03-23	REVISED	O.HU	S.HDU	W.J.KE
83	2006-03-23	REVISED	O.HU	S.HDU	W.J.KE
84	2006-03-23	REVISED	O.HU	S.HDU	W.J.KE
85	2006-03-23	REVISED	O.HU	S.HDU	W.J.KE
86	2006-03-23	REVISED	O.HU	S.HDU	W.J.KE
87	2006-03-23	REVISED	O.HU	S.HDU	W.J.KE
88	2006-03-23	REVISED	O.HU	S.HDU	W.J.KE
89	2006-03-23	REVISED	O.HU	S.HDU	W.J.KE
90	2006-03-23	REVISED	O.HU	S.HDU	W.J.KE
91	2006-03-23	REVISED	O.HU	S.HDU	W.J.KE
92	2006-03-23	REVISED	O.HU	S.HDU	W.J.KE
93	2006-03-23	REVISED	O.HU	S.HDU	W.J.KE
94	2006-03-23	REVISED	O.HU	S.HDU	W.J.KE
95	2006-03-23	REVISED	O.HU	S.HDU	W.J.KE
96	2006-03-23	REVISED	O.HU	S.HDU	W.J.KE
97	2006-03-23	REVISED	O.HU	S.HDU	W.J.KE
98	2006-03-23	REVISED	O.HU	S.HDU	W.J.KE
99	2006-03-23	REVISED	O.HU	S.HDU	W.J.KE
100	2006-03-23	REVISED	O.HU	S.HDU	W.J.KE

THIS DRAWING IS A CONTROLLED DOCUMENT.

TE Connectivity  
 AMPMODU 2.0mm PITCH, REC  
 CONN, VERTICAL, MOUNT TYPE

108-57197

SIZE: A3 CAGE CODE: - DRAWING NO: C-1734506

SCALE: 1:1 SHEET: 2 of 2 REV: B1