

4

3

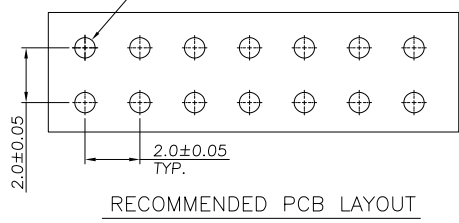
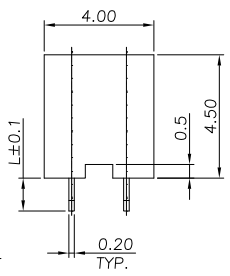
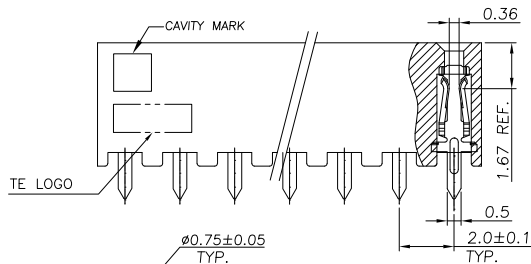
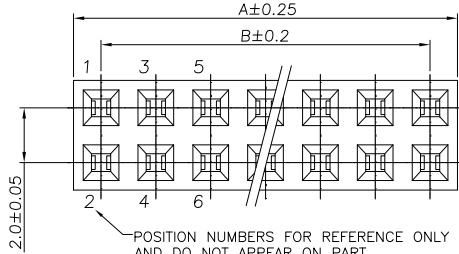
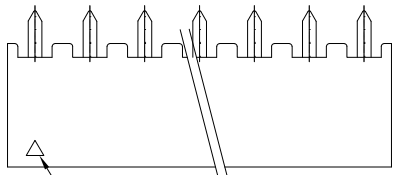
2

1

THIS DRAWING IS UNPUBLISHED. RELEASED FOR PUBLICATION NOV. 2001. ALL RIGHTS RESERVED. COPYRIGHT 2009 By -

LOC	DIST	REVISIONS			
P	LTR	DESCRIPTION	DATE	DWN	APVD
E3	ECR-10-026537		27JUN11	KK	HMR

- NOTE:
- MATERIAL : HOUSING : NYLON 66 OR EQUIVALENT, UL94V-0, BLACK COLOUR. CONTACT : COPPER ALLOY
 - FINISH: CONTACT : GOLD PLATED (SEE TABLE) ON CONTACT AREA 80µ" MIN. TIN PLATED ON SOLDER TAIL, 50µ" MIN. NICKEL UNDERPLATED ALL OVER.
 - APPLICATION : SOLDER TAIL LENGTH 2.6 FOR PCB THICKNESS 1.6±0.1 1.2 FOR PCB THICKNESS 0.3 MAX.
 - KEYING POS. : HOUSING CAVITY MOLDED SHUT
 - QUALIFICATION TEST REPORT: 501-57197



OBsolete	6	40	38	40	9	-	9	OBsolete	6	40	38	40	4	-	-	8
OBsolete		50	48	50	9	-	-	OBsolete		50	48	50	4	-	-	-
OBsolete		48	46	48	9	-	-	OBsolete		48	46	48	4	-	-	-
OBsolete		46	44	46	9	-	-	OBsolete		46	44	46	4	-	-	-
OBsolete		44	42	44	9	-	-	OBsolete		44	42	44	4	-	-	-
OBsolete		42	40	42	9	-	-	OBsolete		42	40	42	4	-	-	-
OBsolete		40	38	40	9	-	-	OBsolete		40	38	40	4	-	-	-
OBsolete		38	36	38	9	-	-	OBsolete		38	36	38	4	-	-	-
OBsolete		36	34	36	9	-	-	OBsolete		36	34	36	4	-	-	-
OBsolete		34	32	34	9	-	-	OBsolete		34	32	34	4	-	-	-
OBsolete		32	30	32	9	-	-	OBsolete		32	30	32	3	-	-	-
OBsolete		30	28	30	8	-	-	OBsolete		30	28	30	3	-	-	-
OBsolete		28	26	28	8	-	-	OBsolete		28	26	28	3	-	-	-
OBsolete		26	24	26	8	-	-	OBsolete		26	24	26	3	-	-	-
OBsolete		24	22	24	8	-	-	OBsolete		24	22	24	3	-	-	-
OBsolete		22	20	22	8	-	-	OBsolete		22	20	22	3	-	-	-
OBsolete		20	18	20	8	-	-	OBsolete		20	18	20	3	-	-	-
OBsolete		18	16	18	8	-	-	OBsolete		18	16	18	3	-	-	-
OBsolete		16	14	16	8	-	-	OBsolete		16	14	16	3	-	-	-
OBsolete		14	12	14	8	-	-	OBsolete		14	12	14	3	-	-	-
OBsolete		12	10	12	7	-	-	OBsolete		12	10	12	2	-	-	-
OBsolete		10	8	10	7	-	-	OBsolete		10	8	10	2	-	-	-
OBsolete		8	6	8	7	-	-	OBsolete		8	6	8	2	-	-	-
OBsolete		6	4	6	7	-	-	OBsolete		6	4	6	2	-	-	-
OBsolete		4	2	4	7	-	-	OBsolete		4	2	4	2	-	-	-
OBsolete		50	48	50	7	-	-	OBsolete		50	48	50	2	-	-	-
OBsolete		48	46	48	7	-	-	OBsolete		48	46	48	2	-	-	-
OBsolete		46	44	46	7	-	-	OBsolete		46	44	46	2	-	-	-
OBsolete		44	42	44	7	-	-	OBsolete		44	42	44	2	-	-	-
OBsolete		42	40	42	7	-	-	OBsolete		42	40	42	2	-	-	-
OBsolete		40	38	40	6	-	-	OBsolete		40	38	40	1	-	-	-
OBsolete		38	36	38	6	-	-	OBsolete		38	36	38	1	-	-	-
OBsolete		36	34	36	6	-	-	OBsolete		36	34	36	1	-	-	-
OBsolete		34	32	34	6	-	-	OBsolete		34	32	34	1	-	-	-
OBsolete		32	30	32	6	-	-	OBsolete		32	30	32	1	-	-	-
OBsolete		28	26	28	6	-	-	OBsolete		28	26	28	1	-	-	-
OBsolete		26	24	26	6	-	-	OBsolete		26	24	26	1	-	-	-
OBsolete		24	22	24	6	-	-	OBsolete		24	22	24	1	-	-	-
OBsolete		22	20	22	6	-	-	OBsolete		22	20	22	1	-	-	-
OBsolete		20	18	20	5	-	-	OBsolete		20	18	20	9	-	-	-
OBsolete		18	16	18	5	-	-	OBsolete		18	16	18	8	-	-	-
OBsolete		16	14	16	5	-	-	OBsolete		16	14	16	7	-	-	-
OBsolete		14	12	14	5	-	-	OBsolete		14	12	14	6	-	-	-
OBsolete		12	10	12	5	-	-	OBsolete		12	10	12	5	-	-	-
OBsolete		10	8	10	5	-	-	OBsolete		10	8	10	4	-	-	-
OBsolete		8	6	8	5	-	-	OBsolete		8	6	8	3	-	-	-
OBsolete		6	4	6	5	-	-	OBsolete		6	4	6	2	-	-	-
OBsolete		4	2	4	5	-	-	OBsolete		4	2	4	1	-	-	-

THIS DRAWING IS A CONTROLLED DOCUMENT.

DIMENSIONS: mm	TOLERANCES UNLESS OTHERWISE SPECIFIED:	DWN O.HU 30-NOV-2001	CHK J.CHENG 30-NOV-2001	TE Connectivity	
0 PLC ± -	1 PLC ± 0.15	APVD J.WU 30-NOV-2001	NAME	AMP MODU 2.0mm PITCH REC CONN, VERTICAL MOUNT TYPE	
2 PLC ± 0.10	3 PLC ± 0.05	PRODUCT SPEC	SIZE A3	CAGE CODE -	DRAWING NO C-1470209
4 PLC ± -	ANGLES ± 3'	APPLICATION SPEC	WEIGHT -	RESTRICTED TO -	
MATERIAL	FINISH	108-57197	CUSTOMER DRAWING	SCALE 1:1	SHEET 1 of 2
					REV E3

4

3

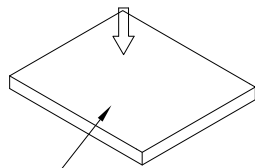
2

1

THIS DRAWING IS UNPUBLISHED. RELEASED FOR PUBLICATION NOV. 2001.
 COPYRIGHT 2009 By - ALL RIGHTS RESERVED.

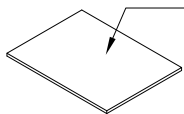
LOC	DIST	REVISIONS			
P	LTR	DESCRIPTION	DATE	DWN	APVD
IR	-	SEE SHEET 1	-	-	-

CONNECTOR



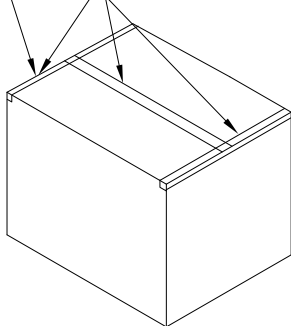
BOX
 314mm(L)X128mm(W)X11mm(H)

CORRUGATED PAPER
 309mm(L)X125mm(W)X0.2mm(H)

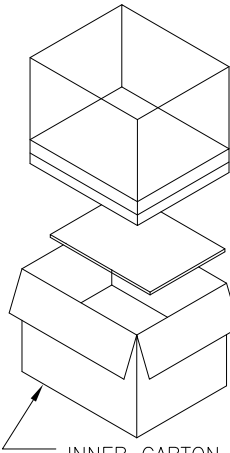


OUTER CARTON
 340mm(L)X288mm(W)X316(H)

TAPE



INNER CARTON
 320mm(L)X138mm(W)X144mm(H)



QTY	DESCRIPTION	UNIT	POS.	PART NUMBER
OBsolete	5040	1260	105	40 9 -9
OBsolete	4320	1080	90	50 9 -8
OBsolete	4320	1080	90	48 9 -7
OBsolete	4320	1080	90	46 9 -6
OBsolete	4320	1080	90	44 9 -5
OBsolete	5040	1260	105	42 9 -4
OBsolete	5040	1260	105	40 9 -3
OBsolete	5040	1260	105	38 9 -2
OBsolete	5760	1440	120	36 9 -1
OBsolete	5760	1440	120	34 8 -0
OBsolete	6480	1620	135	32 8 -9
OBsolete	7200	1800	150	30 8 -8
OBsolete	7200	1800	150	28 8 -7
OBsolete	7920	1980	165	26 8 -6
OBsolete	8640	2160	180	24 8 -5
OBsolete	9360	2340	195	22 8 -4
OBsolete	10080	2520	210	20 8 -3
OBsolete	11520	2880	240	18 8 -2
OBsolete	12960	3240	270	16 8 -1
OBsolete	15120	3780	315	14 8 -0
OBsolete	17280	4320	360	12 7 -9
OBsolete	20880	5220	435	10 7 -8
OBsolete	26640	6660	555	8 7 -7
OBsolete	35280	8820	735	6 7 -6
OBsolete	51840	12960	1080	4 7 -1470209-5
OBsolete	4320	1080	90	50 7 -4
OBsolete	4320	1080	90	48 7 -3
OBsolete	4320	1080	90	46 7 -2
OBsolete	4320	1080	90	44 7 -1
OBsolete	5040	1260	105	42 7 -0
OBsolete	5040	1260	105	40 6 -9
OBsolete	5040	1260	105	38 6 -8
OBsolete	5760	1440	120	36 6 -7
OBsolete	5760	1440	120	34 6 -6
OBsolete	6480	1620	135	32 6 -5
OBsolete	7200	1800	150	30 6 -4
OBsolete	7200	1800	150	28 6 -3
OBsolete	7920	1980	165	26 6 -2
OBsolete	8640	2160	180	24 6 -1
OBsolete	9360	2340	195	22 6 -0
OBsolete	10080	2520	210	20 5 -9
OBsolete	11520	2880	240	18 5 -8
OBsolete	12960	3240	270	16 5 -7
OBsolete	15120	3780	315	14 5 -6
OBsolete	17280	4320	360	12 5 -5
OBsolete	20880	5220	435	10 5 -4
OBsolete	26640	6660	555	8 5 -3
OBsolete	35280	8820	735	6 5 -2
OBsolete	51840	12960	1080	4 5 -1470209-1

THIS DRAWING IS A CONTROLLED DOCUMENT.

DWN: O.HU 30-NOV-2001
 CHK: J.CHENG 30-NOV-2001
 APVD: J.WU 30-NOV-2001

TE Connectivity
 AMPMODU 2.0mm PITCH REC
 CONN,VERTICAL MOUNT TYPE

PRODUCT SPEC: 108-57197
 APPLICATION SPEC: -

SIZE: A3 CAGE CODE: - DRAWING NO: C-1470209 RESTRICTED TO: -
 WEIGHT: -
 MATERIAL: SEE SHEET 1 FINISH: SEE SHEET 1

CUSTOMER DRAWING SCALE: 1:1 SHEET: 2 of 2 REV: E3