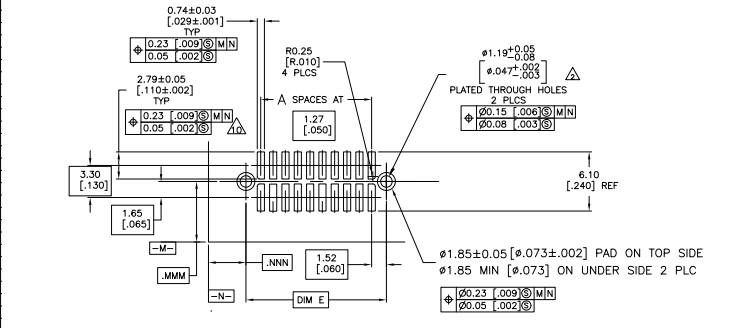
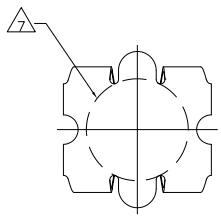
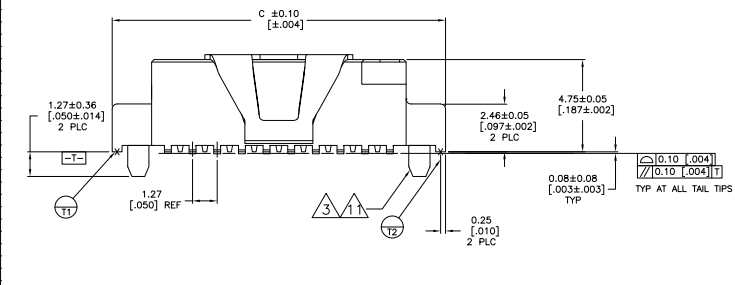
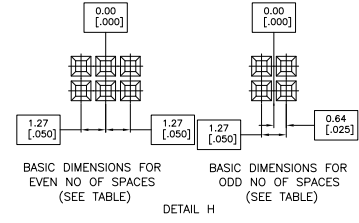
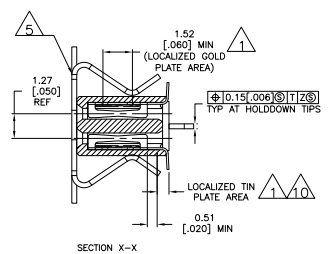
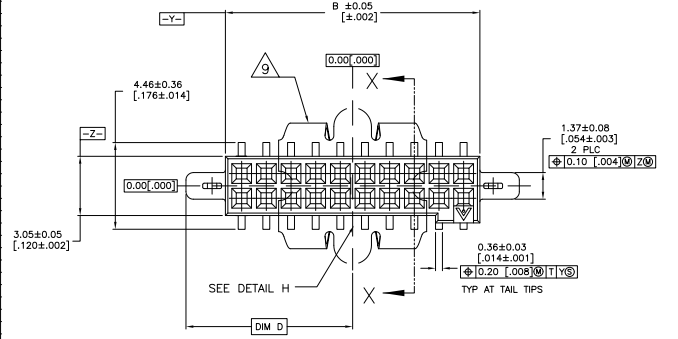


THIS DRAWING IS UNPUBLISHED
 © 2008 BY THE REGISTERED PROPRIETOR. ALL RIGHTS RESERVED.

REV	DATE	DESCRIPTION	BY	CHK	APP
D	02-02-03	0702 04	0100204	BSV	DLS
DT		REVISED PER ECO-10-000030	0500010	KK	AEG



RECOMMENDED BOARD LAYOUT
 SCALE 5:1

- △ 0.00076 [0.00030] GOLD IN LOCALIZED PLATE AREA
 0.00381 [0.00150] TIN ON SOLDER TAILS
 ALL OVER 0.00127 [0.00050] NICKEL
- △ USE 1.32±0.02 [0.0520±.0010] DRILLED HOLE (#55 DRILL)
 WITH 0.0025±(.001) MIN COPPER
- △ PLATING: 0.0038 [0.00150] TIN OVER 0.00127 [0.00050] NICKEL
- 4. IF PLANNING TO USE MORE THAN ONE MATING PAIR OF CONNECTORS
 TO INTERCONNECT 2 BOARDS, PLEASE REFER TO PARA. 3.3 IN THE
 APPLICATION SPEC, #114-7010
- △ VACUUM COVER DESIGNED FOR 4.0 [1.60] DIA NOZZLE. VACUUM COVER TO BE REMOVED
 AFTER SOLDERING.
- 6. PACKAGED IN EIA 481 TAPE AND REEL. SEE TABLE FOR TAPE WIDTHS.
- △ 5.2 [205] MIN TARGET AREA FOR VACUUM PICK-UP.
- △ HOUSING: LCP, COLOR-BLACK.
 CONTACT: COPPER ALLOY PER ASTM SPECIFICATION B422.
 LOCATOR: COPPER ALLOY PER ASTM SPECIFICATION B194
 VACUUM COVER: ALUMINUM ALLOY PER ASTM SPECIFICATION 209.
- △ VACUUM COVER SHOWN IN PHANTOM LINE.
- △ 0.00076(0.00030) GOLD IN LOCALIZED GOLD PLATE AREA, 0.00381(0.00150)
 TIN ON SOLDER TAILS, ALL OVER 0.00127 (0.00050) NICKEL.
- △ PLATING 0.00381(0.00150) TIN OVER
 0.00127(0.00050) NICKEL.
- △ OBSOLETE PARTS: OBSOLETE CIS STREAMLINING PER D.RENAUD/D.SINISI

TAP WIDTH	TAP WIDTH				NO OF POS	PART NUMBER	
	E	D	C	B			A
72 mm	46.23 [1.820]	23.11 [.910]	48.92 [1.926]	44.86 [1.766]	34	70	△ 5-147427-2
56 mm	39.88 [1.570]	19.94 [.785]	42.57 [1.676]	38.51 [1.516]	29	60	△ 5-147427-1
72 mm	46.23 [1.820]	23.11 [.910]	48.92 [1.926]	44.86 [1.766]	34	70	147427-2
56 mm	39.88 [1.570]	19.94 [.785]	42.57 [1.676]	38.51 [1.516]	29	60	147427-1

THIS DRAWING IS A CONTROLLED DOCUMENT		BY: DESIGNER	DATE: 02/02/03	REVISED BY: 0100204	DATE: 02/02/03
APPROVED BY: 0100204	DATE: 02/02/03	BY: DESIGNER	DATE: 02/02/03	REVISED BY: 0100204	DATE: 02/02/03
CUSTOMER DRAWING		DRAWING NO: A100779		REVISED TO: 147427	