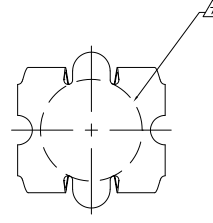
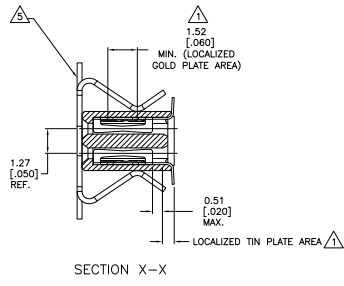
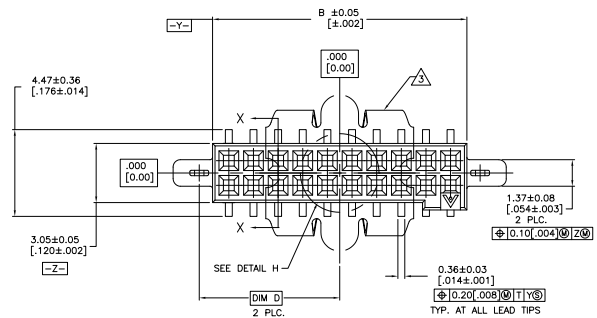
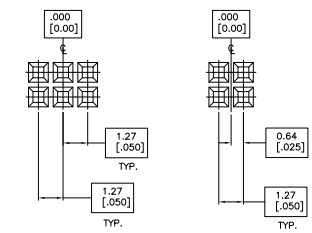
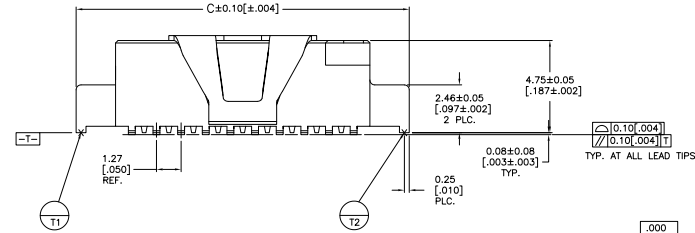


THIS DRAWING IS UNPUBLISHED  
 ALL RIGHTS RESERVED

REV	DATE	DESCRIPTION	BY	CHK	APP
E2	1/17/97	REVISED PER ECO-07-000244	SS	NE	
E3	24/JUN/99	REVISED PER ECO-09-020035	KK	AEG	

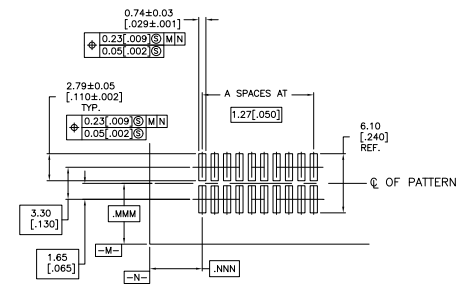


VACUUM COVER



BASIC DIMENSIONS FOR EVEN NO. OF SPACES (SEE TABLE)

BASIC DIMENSIONS FOR ODD NO. OF SPACES (SEE TABLE)



RECOMMENDED BOARD LAYOUT  
 SCALE: 5:1

- 1. 0.00076 [0.00030] GOLD IN LOCALIZED GOLD PLATE AREA  
 0.0038 [0.00150] TIN-LEAD ON SOLDER LEADS,  
 ALL OVER 0.00127 [0.000050] NICKEL.
- 2. IF PLANNING TO USE MORE THAN ONE MATING PAIR OF CONNECTORS  
 TO INTERCONNECT 2 BOARDS, PLEASE REFER TO THE SPACING  
 PARAGRAPH IN APPLICATION SPEC.#114-7010.
- 3. VACUUM COVER SHOWN IN PHANTOM.
- 4. PACKAGED IN TAPE AND REEL PER EIA-481  
 SPECIFICATIONS. SEE CHART FOR  
 TAPE WIDTHS.
- 5. VACUUM COVER DESIGNED FOR 4.0 [1.60] DIA NOZZLE.  
 VACUUM COVER TO BE REMOVED AFTER SOLDERING.
- 6. HOUSING: LCP, COLOR BLACK.  
 CONTACT: COPPER ALLOY PER ASTM SPECIFICATION B422.  
 VACUUM COVER: ALUMINUM ALLOY PER ASTM SPECIFICATION B209.
- 7. 5.2 [205] MIN. TARGET AREA FOR  
 VACUUM PICK-UP.
- 8. 0.00076(0.00030) GOLD IN LOCALIZED GOLD PLATE AREA, 0.0038(0.00150)  
 TIN ON SOLDER LEADS, ALL OVER 0.00127(0.00050) NICKEL.
- 9. ROHS 2002/95/EC COMPLIANT.
- 10. OBSOLETE PARTS: OBSOLETE CIS STREAMLINING PER D.RENAUD/D.SINISI

FINISH	TAPE WIDTH	D	C	B	A	NO. OF POS	PART NUMBER
OBsolete	44mm	10.41 [410]	23.52 [926]	19.46 [766]	14	30	5-147413-4
OBsolete	32mm	7.24 [285]	17.17 [676]	13.11 [516]	9	20	5-147413-3
OBsolete	56mm	16.76 [660]	36.22 [1426]	32.16 [1266]	24	50	5-147413-2
OBsolete	32mm	7.24 [285]	17.17 [676]	13.11 [516]	4	10	5-147413-1
	44mm	10.41 [410]	23.52 [926]	19.46 [766]	14	30	147413-4
	32mm	7.24 [285]	17.17 [676]	13.11 [516]	9	20	147413-3
	56mm	16.76 [660]	36.22 [1426]	32.16 [1266]	24	50	147413-2
	32mm	4.06 [160]	10.82 [426]	6.75 [266]	4	10	147413-1

THIS DRAWING IS A CONTROLLED DOCUMENT.		DATE	BY	APPROVED	REVISED
DRAWING NO. 108-1332		DATE	BY	APPROVED	REVISED
SEE TABLE		DATE	BY	APPROVED	REVISED
CUSTOMER DRAWING		DATE	BY	APPROVED	REVISED