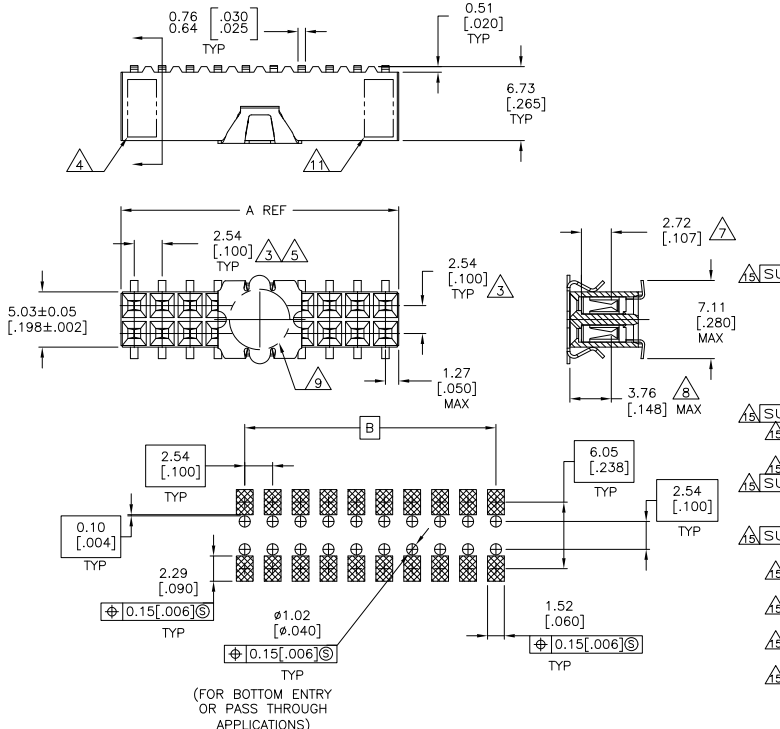


THIS DRAWING IS UNPUBLISHED. RELEASED FOR PUBLICATION. ALL RIGHTS RESERVED.

REVISIONS table with columns: LOC, DIST, F, LWR, DESCRIPTION, DATE, DMN, APD. Includes entry: J7 REVISED PER ECO-11-004917 11MAR11 RIK HMR



RECOMMENDED PC BOARD LAYOUT 0.20[.008] THICK STENCIL

(FOR BOTTOM ENTRY OR PASS THROUGH APPLICATIONS)

Table for part numbers 5-147105-1 thru 9-147105-0. Columns include dimensions (120mm, 88mm, 72mm, 44mm, 24mm) and part numbers. Includes status callouts like OBSOLETE, SUPERCEDED, and FINISH.

Administrative information block containing: THIS DRAWING IS A CONTROLLED DOCUMENT, DIM, S.M. BINNER, ORNOV02, J. OLSON, PRODUCT SPEC, APPLICATION SPEC: 108-25022, WEIGHT: 114-25018, CUSTOMER DRAWING, TE Connectivity logo, and RECEPTACLE ASSEMBLY, MOD IV, DOUBLE ROW, DUAL ENTRY, .100X.100CL, SURFACE MOUNT, AMPMODU.

4

3

2

1

THIS DRAWING IS UNPUBLISHED. RELEASED FOR PUBLICATION
 © copyright - By - ALL RIGHTS RESERVED.

LOC	DIST	REVISIONS					
AD	00	F	LR	DESCRIPTION	DATE	BY	APPD
-	-	-	-	SEE SHEET 1	-	-	-

- 1 HOUSING: FLAME RETARDANT, GLASS FILLED, POLYESTER, COLOR: BLACK.
CONTACT: PHOSPHOR BRONZE
VACUUM COVER: STAINLESS STEEL
- 2 CONTACT: DUPLEX PLATED 0.76µm[.000030] GOLD IN CONTACT AREA, 3.81-7.62µm[.000150-.000300] BRIGHT TIN-LEAD ON, LEADS, ALL OVER 1.27µm[.000050] MINIMUM NICKEL
- 3 THESE DIMENSIONS PERTAIN TO CAVITY CENTERLINES ONLY NOT TO CONTACT LOCATIONS
- 4 TE CONNECTIVITY PART NUMBER AND DATE CODE ARE MARKED IN APPROXIMATE LOCATION SHOWN.
- 5 TOLERANCE IS NON-CUMULATIVE.
- 6 2 POSITION DATE CODE IS MARKED OPPOSITE SIDE OF TE CONNECTIVITY LOGO.
- 7 POINT OF MEASUREMENT DIMENSION FOR PLATING THICKNESS (INSIDE CONTACT BEAM).
- 8 POINT-OF-CONTACT DIMENSION.
- 9 ø5.51[.217] MIN TARGET AREA FOR VACUUM PICK UP. COVER TO BE REMOVED AFTER SOLDERING.
- 10 PACKAGED IN TAPE & REEL PER EIA 481 SPECIFICATION.
- 11 TE CONNECTIVITY TRADEMARK AND CSA LOGO ARE MOLDED INTO HOUSING.
- 12 NO PART NUMBER REQUIRED ON THIS PART.
- 13 CONTACT: DUPLEX PLATE CONNECTIVITYD 0.76µm[.000030] GOLD IN CONTACT AREA, 3.81-7.62µm[.000150-.000300] MATTE TIN ON LEADS, ALL OVER 1.27µm[.000050] MINIMUM NICKEL.
- 14 ROHS 2002/95/EC COMPLIANT.
- 15 OBSOLETE PARTS: OBSOLETE CIS STREAMLINING PER D.RENAUD/D.SINISI

OBSOLETE	120mm	99.06[3.900]	101.60[4.000]	80	9-147105-0
		96.52[3.800]	99.06[3.900]	78	8-147105-9
		93.98[3.700]	96.52[3.800]	76	8-147105-8
		91.44[3.600]	93.98[3.700]	74	8-147105-7
		88.90[3.500]	91.44[3.600]	72	8-147105-6
		86.36[3.400]	88.90[3.500]	70	8-147105-5
		83.82[3.300]	86.36[3.400]	68	8-147105-4
		81.28[3.200]	83.82[3.300]	66	8-147105-3
		78.74[3.100]	81.28[3.200]	64	8-147105-2
		76.20[3.000]	78.74[3.100]	62	8-147105-1
		73.66[2.900]	76.20[3.000]	60	8-147105-0
		71.12[2.800]	73.66[2.900]	58	7-147105-9
		68.58[2.700]	71.12[2.800]	56	7-147105-8
OBSOLETE	88mm	66.04[2.600]	68.58[2.700]	54	7-147105-7
		63.50[2.500]	66.04[2.600]	52	7-147105-6
		60.96[2.400]	63.50[2.500]	50	7-147105-5
		58.42[2.300]	60.96[2.400]	48	7-147105-4
		55.88[2.200]	58.42[2.300]	46	7-147105-3
		53.34[2.100]	55.88[2.200]	44	7-147105-2
OBSOLETE	72mm	50.80[2.000]	53.34[2.100]	42	7-147105-1
OBSOLETE		48.26[1.900]	50.80[2.000]	40	7-147105-0
		45.72[1.800]	48.26[1.900]	38	6-147105-9
		43.18[1.700]	45.72[1.800]	36	6-147105-8
		40.64[1.600]	43.18[1.700]	34	6-147105-7
OBSOLETE		38.10[1.500]	40.64[1.600]	32	6-147105-6
		35.56[1.400]	38.10[1.500]	30	6-147105-5
OBSOLETE		33.02[1.300]	35.56[1.400]	28	6-147105-4
		30.48[1.200]	33.02[1.300]	26	6-147105-3
		27.94[1.100]	30.48[1.200]	24	6-147105-2
OBSOLETE		25.40[1.000]	27.94[1.100]	22	6-147105-1
		22.86[.900]	25.40[1.000]	20	6-147105-0
OBSOLETE		20.32[.800]	22.86[.900]	18	5-147105-9
		17.78[.700]	20.32[.800]	16	5-147105-8
OBSOLETE		15.24[.600]	17.78[.700]	14	5-147105-7
		12.70[.500]	15.24[.600]	12	5-147105-6
		10.16[.400]	12.70[.500]	10	5-147105-5
OBSOLETE		7.62[.300]	10.16[.400]	8	5-147105-4
OBSOLETE		5.08[.200]	7.62[.300]	6	5-147105-3
OBSOLETE		2.54[.100]	5.08[.200]	4	5-147105-2
	24mm	-	2.54[.100]	2	5-147105-1

FINISH	EIA TAPE WIDTH	B	A	NO.OF POSN.	PART NUMBER
THIS DRAWING IS A CONTROLLED DOCUMENT.		DRM	M.B. BINNER	ORNOV02	
DIMENSIONS: mm [INCHES]		CHK	J. OLSON	ORNOV02	
TOLERANCES UNLESS OTHERWISE SPECIFIED		APPD	J. OLSON	ORNOV02	NAME
0 PLC	±	APPLICATION SPEC	108-25022	SIZE	ONE CODE (FORMING ID)
1 PLC	±	WEIGHT	114-25018	A2	00779
2 PLC	±	CUSTOMER DRAWING		SCALE	1:1
3 PLC	±			SHEET	2 of 2
4 PLC	±			REV	J7
ANGLES	±				

RECEPTACLE ASSEMBLY, MOD IV, DOUBLE ROW, DUAL ENTRY, .100X.100CL, SURFACE MOUNT, AMPMODU

RESTRICTED TO -