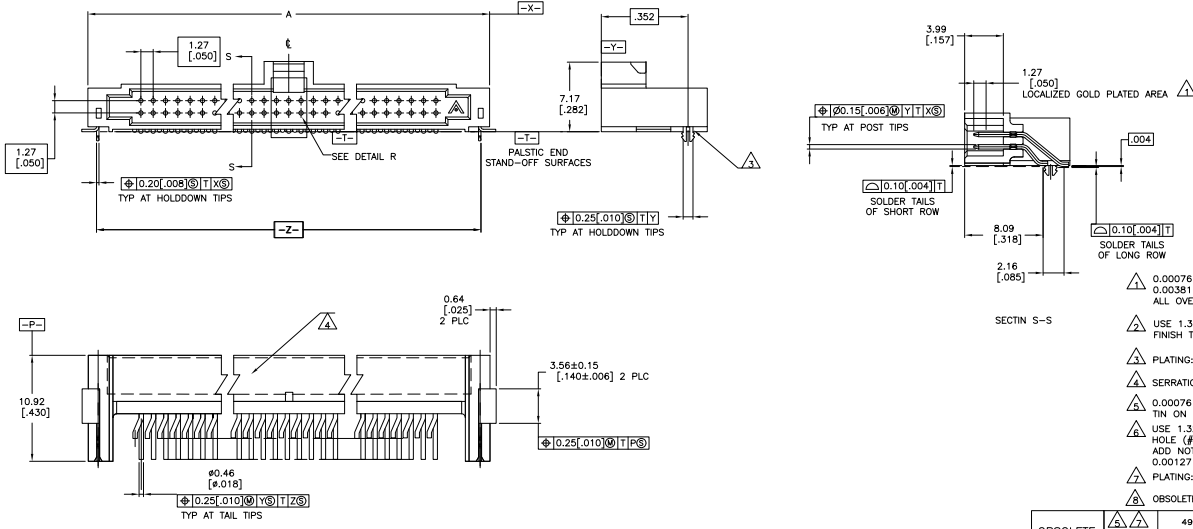
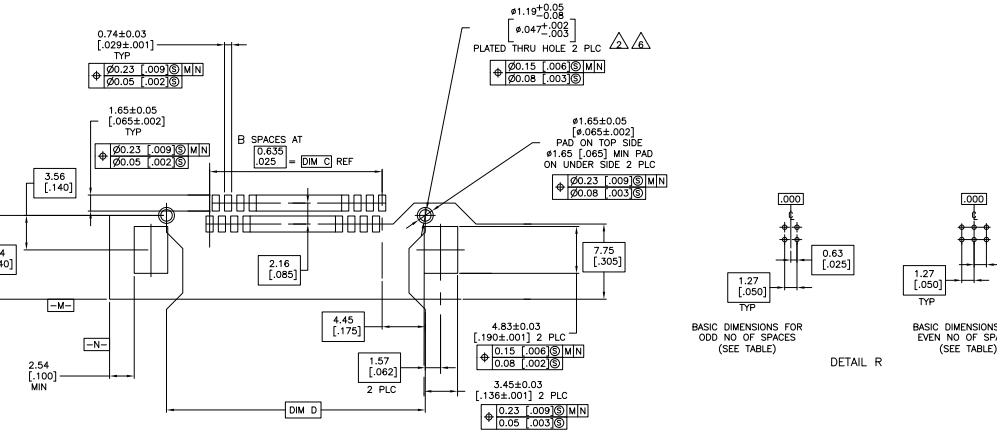


REV	DATE	DESCRIPTION	BY	CHK	APP
AD	00				



- △ 0.00076 [0.00030] GOLD IN LOCALIZED PLATE AREA
- 0.00381 [0.00150] TIN-LEAD ON SOLDER TAILS
- ALL OVER 0.00127 [0.00050] NICKEL
- △ USE 1.32±0.02 [0.052±0.0010] DRILLED HOLE (#55 DRILL)
- FINISH TO BE TIN/LEAD OVER 0.02 [0.001] MIN COPPER
- △ PLATING: 0.0038 [0.00150] TIN-LEAD OVER 0.00127 [0.00050] NICKEL
- △ SERRATIONS OPTIONAL THIS SURFACE.
- △ 0.00076 [0.00030] GOLD IN LOCALIZED PLATE AREA 0.00381 [0.00150]
- TIN ON SOLDER TAILS ALL OVER .00127 [0.00050] NICKEL
- △ USE 1.32±/-0.02 [0.052±/-0.0010] DRILLED
- HOLE (#55 DRILL) WITH 0.02 [0.0010] MIN COPPER.
- ADD NOTE 7 TO READ AS FOLLOWS: "PLATING: 0.00381 [0.00150] TIN OVER
- 0.00127 [0.00050] NICKEL"
- △ PLATING: 0.0038 [0.00150] TIN OVER 0.00127 [0.00050] NICKEL
- △ OBSOLETE PARTS: OBSOLETE CIS STREAMLINING PER D.RENAUD/D.SINISI

REV	DATE	DESCRIPTION	BY	CHK	APP
8		OBSOLETE			
49	71.12 [2.800]	62.87 [2.475]	99	73.15 [2.880]	100
44	2.550 [0.100]	2.225 [0.088]	89	2.630 [0.103]	90
39	2.300 [0.091]	1.975 [0.078]	79	2.380 [0.094]	80
34	52.07 [2.050]	43.82 [1.725]	69	54.10 [2.130]	70
29	1.800 [0.071]	1.475 [0.058]	59	1.880 [0.074]	60
24	39.37 [1.550]	31.12 [1.225]	49	41.40 [1.630]	50
19	33.02 [1.300]	24.77 [0.975]	39	35.05 [1.380]	40
14	26.67 [1.050]	18.42 [0.725]	29	28.70 [1.130]	30
9	20.32 [0.800]	12.07 [0.475]	19	22.35 [0.880]	20
4	13.97 [0.550]	9.72 [0.380]	9	16.00 [0.630]	10
49	71.12 [2.800]	62.87 [2.475]	99	73.15 [2.880]	100
44	2.550 [0.100]	2.225 [0.088]	89	2.630 [0.103]	90
39	2.300 [0.091]	1.975 [0.078]	79	2.380 [0.094]	80
34	52.07 [2.050]	43.82 [1.725]	69	54.10 [2.130]	70
29	1.800 [0.071]	1.475 [0.058]	59	1.880 [0.074]	60
24	39.37 [1.550]	31.12 [1.225]	49	41.40 [1.630]	50
19	33.02 [1.300]	24.77 [0.975]	39	35.05 [1.380]	40
14	26.67 [1.050]	18.42 [0.725]	29	28.70 [1.130]	30
9	20.32 [0.800]	12.07 [0.475]	19	22.35 [0.880]	20
4	13.97 [0.550]	9.72 [0.380]	9	16.00 [0.630]	10



RECOMENDED BOARD LAYOUT
 SCALE 5:1

FINISH	NO. OF SPA (SEE DETAIL R)	D	C	B	A	NUMBER OF POSITIONS	PART NUMBER
△	49	71.12	62.87	99	73.15	100	104895-0
△	44	2.550	2.225	89	2.630	90	104895-9
△	39	2.300	1.975	79	2.380	80	104895-8
△	34	52.07	43.82	69	54.10	70	104895-7
△	29	1.800	1.475	59	1.880	60	104895-6
△	24	39.37	31.12	49	41.40	50	104895-5
△	19	33.02	24.77	39	35.05	40	104895-4
△	14	26.67	18.42	29	28.70	30	104895-3
△	9	20.32	12.07	19	22.35	20	104895-2
△	4	13.97	9.72	9	16.00	10	104895-1