

4

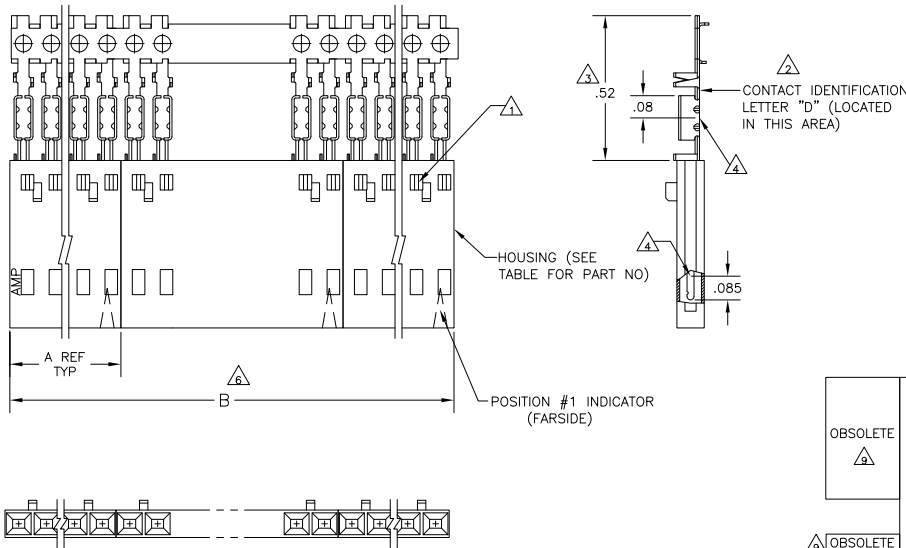
3

2

1

THIS DRAWING IS UNPUBLISHED. RELEASED FOR PUBLICATION BY TYCO ELECTRONICS CORPORATION. ALL RIGHTS RESERVED.

LOC	DIST	REVISIONS					
AD	00	P	LTR	DESCRIPTION	DATE	BY	APPD
		J	EC	063C 0771 04	29DEC04	BSV	JLG
		J1		REVISED PER ECO-09-021826	01SEP09	KK	AEG



- △ CONTACTS ARE LATCHED INTO THE PRELOAD WINDOWS
- △ USE WITH #22-#26 AWG WIRE SIZE, .054/.030 INSULATION DIAMETER, .015 MAXIMUM INSULATION THICKNESS
- △ THE DIMENSION APPLIES WITH THE FORWARD PRELOAD STOP IN CONTACT WITH THE HOUSING SURFACE
- △ POINT OF MEASUREMENT FOR PLATING THICKNESS
- △ FOR INDIVIDUAL ASSEMBLIES SEE PART NUMBER 103655
- △ ASSEMBLIES ARE JOINED BY THE CARRIER STRIP. ORDER QUANTITY REFLECTS TOTAL NUMBER OF INDIVIDUAL ASSEMBLIES REQUIRED. SEE TABLE FOR NUMBER OF ASSEMBLIES PER STRIP.
- △ PINS: .000015 GOLD IN THE CONTACT AREA, .000050-.000100 BRIGHT TIN-LEAD ON THE TERMINATION AREA, ALL OVER .000050 NICKEL
- △ PINS: .000015 GOLD IN THE CONTACT AREA, .000050-.000100 MATTE TIN ON THE TERMINATION AREA, ALL OVER .000050 NICKEL
- △ OBSOLETE PARTS: OBSOLETE CIS STREAMLINING PER D.RENAUD/D.SINISI

OBSOLETE	△	2	2.40	1.198	1-104503-1	12	6-103951-1
		2	2.20	1.098	1-104503-0	11	6-103951-0
		2	2.00	.998	104503-9	10	5-103951-9
		2	1.80	.898	104503-8	9	5-103951-8
		2	1.60	.798	104503-7	8	5-103951-7
		2	1.40	.698	104503-6	7	5-103951-6
		4	2.39	.598	104503-5	6	5-103951-5
		4	1.99	.498	104503-4	5	5-103951-4
		5	1.99	.398	104503-3	4	5-103951-3
		5	1.49	.298	104503-2	3	5-103951-2
10	1.98	.198	104503-1	2	5-103951-1		
OBSOLETE	△	2	2.40	1.198	1-104503-1	12	1-103951-1
		2	2.20	1.098	1-104503-0	11	1-103951-0
		2	2.00	.998	104503-9	10	1-103951-9
		2	1.80	.898	104503-8	9	1-103951-8
		2	1.60	.798	104503-7	8	1-103951-7
		2	1.40	.698	104503-6	7	1-103951-6
		4	2.39	.598	104503-5	6	1-103951-5
		4	1.99	.498	104503-4	5	103951-4
		5	1.99	.398	104503-3	4	103951-3
		5	1.49	.298	104503-2	3	103951-2
10	1.98	.198	104503-1	2	103951-1		
PLATING	△	B	A	HOUSING PART NUMBER	NO OF POSN PER ASSY	ASSEMBLY PART NUMBER ON STRIP	

THIS DRAWING IS A CONTROLLED DOCUMENT.		BY: L. MAYER 11-8-86	TYCO ELECTRONICS CORPORATION
DIMENSIONS: INCHES		CHK: P. C. DEYONG 11-12-86	Harrisburg, Pa 17105-3608
FINISH: SEE TABLE		APP: P. C. DEYONG 11-12-86	108-25034
MATERIALS: FLAME RETARDANT POLYESTER, CULORIMAN, PHS: PHS BRONZE		PRODUCT SPEC: 108-25034	PIN ASSEMBLY, AMPMODU MTE, SINGLE ROW, .100, WITH GUIDE RIBS, FOR #22-#26 AWG WIRE SIZE, STRIP FORM
		APPLICATION SPEC: 114-25026	SIZE: 108-25034 (DRAWING NO)
		WEIGHT: -	RESTRICTED TO: -
		CUSTOMER DRAWING	A2 00779 ©=103951
		SCALE: 4:1	SHEET 1 OF 1 REV J1

AMP 1471-9 REV 31MM2000

103951

A