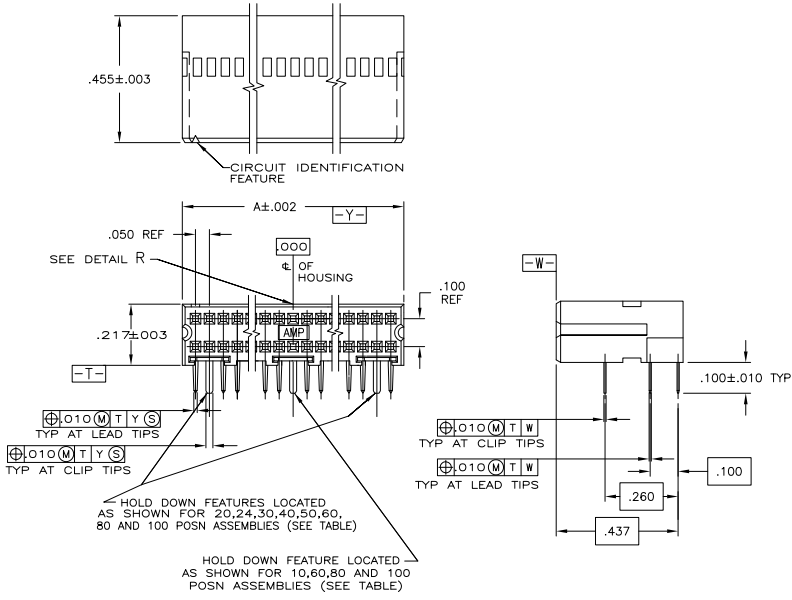
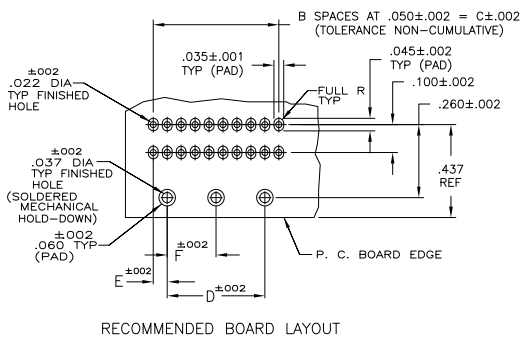
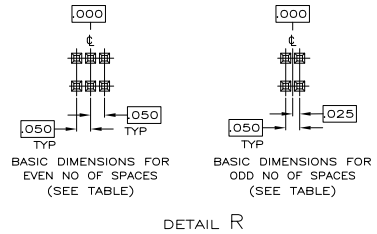


THIS DRAWING IS UNPUBLISHED. RELEASED FOR PUBLICATION. ALL RIGHTS RESERVED.

LOC	DIST	REVISIONS					
AD	39	P	LTR	DESCRIPTION	DATE	OWN	APP'D
		L2		REVISED PER ECO-11-004820	11MAR11	RK	HMR



- △ CONTACT AREA PLATED WITH .000030 GOLD; SOLDER CLIPS AND LEADS PLATED WITH .000150 TIN-LEAD; ALL OVER .000050 NICKEL
- △ POINT OF MEASUREMENT FOR GOLD THICKNESS IS .030 FROM MATING END OF CONTACT
- △ HOUSING: THERMOPLASTIC, COLOR-BLACK. CONTACT: COPPER ALLOY. SOLDER CLIP: PHOSPHOR BRONZE
- △ CONTACT AREA PLATED WITH .000030 GOLD; SOLDER CLIPS AND LEADS PLATED WITH .000150 TIN ALL OVER .000050 NICKEL
- △ PRELIMINARY - NOT FOR PRODUCTION
- △ ROHS 2002/95/EC COMPLIANT
- △ OBSOLETE PARTS: OBSOLETE CIS STREAMLINING PER D.RENAUD/D.SINISI



FINISH	F	E	D	C	B	A	NO OF POSN	PART NUMBER
△ OBSOLETE	-	.050	.450	.550	11	.644	24	△ 5-103911-9
	1.175	.050	2.350	2.450	49	2.544	100	5-103911-8
	.925	.050	1.850	1.950	39	2.044	80	5-103911-7
	-	.050	.850	.950	19	1.044	40	5-103911-5
	-	.050	1.100	1.200	24	1.294	50	5-103911-4
	.675	.050	1.350	1.450	29	1.544	60	5-103911-3
	-	.050	.350	.450	9	.544	20	5-103911-2
	-	.100	-	.200	4	.294	10	5-103911-1
△ OBSOLETE	-	.050	.450	.550	11	.644	24	103911-9
	1.175	.050	2.350	2.450	49	2.544	100	103911-8
	.925	.050	1.850	1.950	39	2.044	80	103911-7
	-	.050	.850	.950	19	1.044	40	103911-5
	-	.050	1.100	1.200	24	1.294	50	103911-4
	.675	.050	1.350	1.450	29	1.544	60	103911-3
	-	.050	.350	.450	9	.544	20	103911-2
	-	.100	-	.200	4	.294	10	103911-1

THIS DRAWING IS A CONTROLLED DOCUMENT. DIM 0 CLOUSER 3-20-06
 DIM 1 S. STARON 3-20-06
 DIM 2 S. STARON 3-20-06
 DIM 3 108-1093
 DIM 4 114-25031

TE Connectivity
 RECEPTACLE ASSEMBLY, RIGHT ANGLE, AMPMODU System 50

SIZE CASE CODE DRAWING NO. RESTRICTED TO: A2 00779 C=103911

CUSTOMER DRAWING SCALE 4:1 SHEET 1 of 1 REV L2

103911