

4

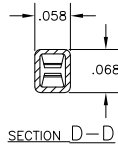
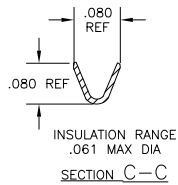
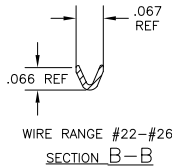
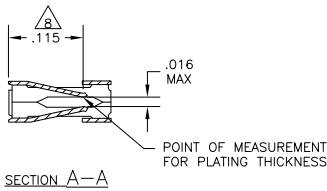
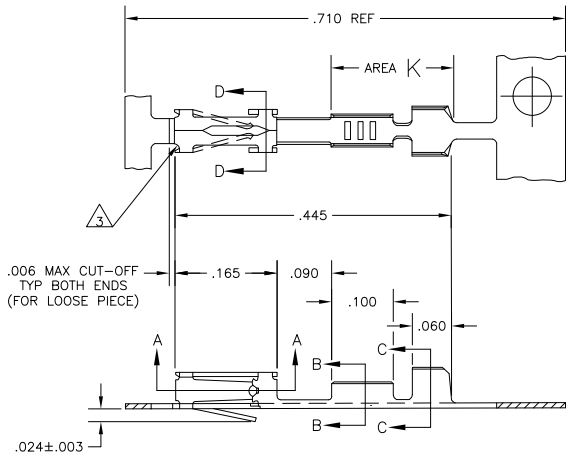
3

2

1

THIS DRAWING IS UNPUBLISHED. RELEASED FOR PUBLICATION. ALL RIGHTS RESERVED.

LOC	DIST	REVISIONS		
P	LTR	DESCRIPTION	DATE	BY
J2		REVISED PER ECO-11-004820	11MAR11	RK HMR



1. REELED FOR MINI APPLICATOR.
3. CUT OUTS ON BOX AT MANUFACTURER'S OPTION.
4. .000015 GOLD ON CONTACT AREA, .000100-.000200 BRIGHT TIN OR BRIGHT TIN-LEAD IN CRIMP AREA K, ALL OVER .000050 NICKEL.
5. .000030 GOLD ON CONTACT AREA, .000100-.000200 BRIGHT TIN OR BRIGHT TIN-LEAD IN CRIMP AREA K, ALL OVER .000050 NICKEL.
6. SHEARED EDGES PERMITTED TO BE UNPLATED.
7. .000100-.000200 BRIGHT TIN-LEAD OVER .000030 NICKEL.
8. POINT OF MEASUREMENT FOR PLATING THICKNESS (INSIDE BEAMS)
9. OBSOLETE PART NUMBER
10. SUPERCEDED BY 103171-5.
11. .000015 GOLD ON CONTACT AREA, MATTE TIN IN CRIMP AREA K, ALL OVER .000050 NICKEL.
12. .000030 GOLD ON CONTACT AREA, MATTE TIN IN CRIMP AREA K, ALL OVER .000050 NICKEL.
13. OBSOLETE PARTS: OBSOLETE CIS STREAMLINING PER D.RENAUD/D.SINISI

5-103171-5	△△△	5-103171-4
△△ 5-103171-2	△△△	5-103171-1
△ -8	△△△	△ -7
103171-5	△△△	103171-4
103171-2	△△△	103171-1
LOOSE PIECE PART NO	FINISH	PART NUMBER

THIS DRAWING IS A CONTROLLED DOCUMENT. DIN 31 MAR 83

TE Connectivity

CONTACT, RECEPTACLE, MOD IV 1/2 CRIMP SNAP-IN FOR 22-26 AWG WIRE

DATE: 11 APR 83

SIZE: A2, CASE CODE: 00779, DRAWING NO: 103171

CUSTOMER DRAWING, SCALE: 8:1, SHEET: 1 of 1, REV: J2