

4

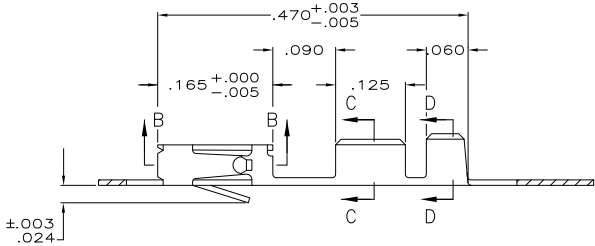
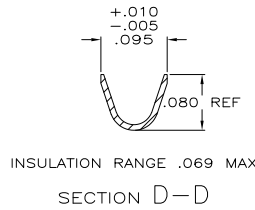
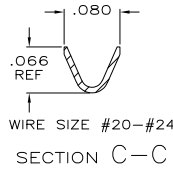
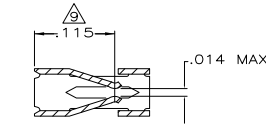
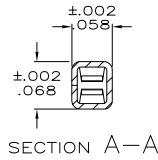
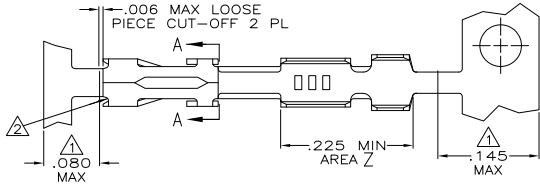
3

2

1

THIS DRAWING IS UNPUBLISHED. RELEASED FOR PUBLICATION. ALL RIGHTS RESERVED.

LOC	DIST	REVISIONS			
P	LTR	DESCRIPTION	DATE	BY	APPD
AD	00	M1	REVISED PER ECO-11-004917	11MAR11	RK HMR



- 1 GOLD PLATING IS NOT REQUIRED IN THIS AREA.
- 2 CUT-OUTS ON THE BOX ARE AT MANUFACTURERS OPTION.
- 3 THIS TERMINAL IS REELED FOR THE STANDARD APPLICATOR.
- 4 THIS TERMINAL IS REELED FOR THE MINI APPLICATOR.
- 5 .000015 GOLD ON THE CONTACT AREA, GOLD FLASH ON THE REMAINDER ALL OVER .000050 NICKEL.
- 6 .000030 GOLD OVER .000050 NICKEL.
- 7 .000030 GOLD ON THE CONTACT AREA, GOLD FLASH ON THE REMAINDER ALL OVER .000050 NICKEL.
- 8 .000100-.000200 BRIGHT TIN-LEAD OVER .000050 NICKEL.
- 9 POINT OF MEASUREMENT FOR PLATING THICKNESS (INSIDE BEAMS).
- 10 SHEARED EDGES ARE PERMITTED TO BE UNPLATED.
- 11 .000015 GOLD ON THE CONTACT AREA, .000100-.000200 BRIGHT TIN-LEAD ON AREA Z, ALL OVER .000050 NICKEL.
- 12 .000030 GOLD ON THE CONTACT AREA, .000100-.000200 BRIGHT TIN-LEAD ON AREA Z, ALL OVER .000050 NICKEL.
- 13 .000030 GOLD ON CONTACT AREA, .000100-.000200 TIN ON AREA Z, ALL OVER .000050 NICKEL.
- 14 .000015 GOLD ON CONTACT AREA, .000100-.000200 TIN ON AREA Z, ALL OVER .000050 NICKEL.

△	△	△	△	2-87195-5	2-87195-4
△	△	△	△	2-87195-6	2-87195-3
△	△	△	△	2-87195-1	2-87195-0
△	△	△	△	1-87195-8	1-87195-7
△	△	△	△	1-87195-6	1-87195-5
△	△	△	△	1-87195-6	1-87195-4
△	△	△	△	1-87195-0	87195-9
△	△	△	△	1-87195-0	87195-8
△	△	△	△	87195-7	87195-6
△	△	△	△	87195-7	87195-5
△	△	△	△	87195-4	87195-3
△	△	△	△	87195-4	87195-2

REMARKS	FINISH	LOOSE PIECE PART NUMBER	PART NUMBER

THIS DRAWING IS A CONTROLLED DOCUMENT.		BY: L.D. RINGLEY 1-6-06	TE Connectivity	
DRAWN: J.L. GEFSEFORD 1-6-06		CHK: J.L. GEFSEFORD 1-6-06	CONTACT, MOD IV 1/2, RECEPTACLE, CRIMP	
DIMENSIONS: INCHES		PRODUCT SPEC: 108-25.021	SIZE: A2	CAGE CODE: 00779
MATERIAL: CU-SN-P, ALLOY		APPLICATION SPEC: 114-25.003	DRAWING NO: C-87195	RESTRICTED TO: -
FINISH: SEE TABLE		WEIGHT: -	SCALE: 10:1	SHEET: 1 of 1
		CUSTOMER DRAWING		REV: M1