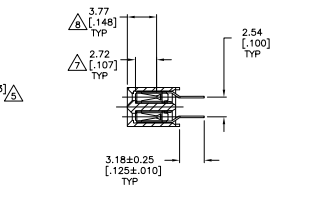
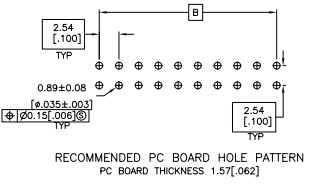
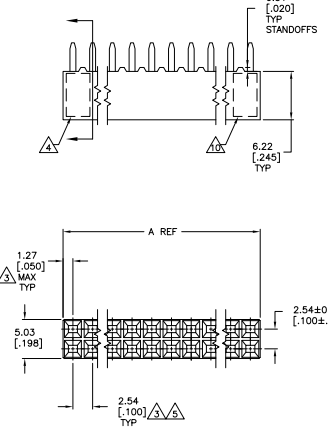


THIS DRAWING IS UNAPPROVED UNLESS INDICATED OTHERWISE
 © 2005 BY 3M ELECTRONICS CORPORATION ALL RIGHTS RESERVED

REV	DATE	DESCRIPTION	BY	CHK	APP
01	00	REVISED PER ECO-08-019092	DMAN	HMR	JQ
02		REVISED PER ECO-09-021510	148EPW	KK	AE



- △ HOUSING: FLAME RETARDANT, GLASS FILLED, THERMOPLASTIC, COLOR: BLACK. CONTACT: PHOSPHOR BRONZE
- △ CONTACT: AREA, 2.54-5.08mm[000100-000200] BRIGHT TIN-LEAD OVER 1.27µm[000050] MIN NICKEL
- △ THESE DIMENSIONS PERTAIN TO CAVITY CENTERLINES ONLY - NOT TO CONTACT LOCATIONS
- △ PART NUMBER AND DATE CODE ARE MARKED IN APPROXIMATE LOCATION SHOWN.
- △ TOLERANCE IS NON-CUMULATIVE.
- △ 2 POSITION DATE CODE IS MARKED OPPOSITE SIDE OF TE LOGO.
- △ POINT-OF-MEASUREMENT DIMENSION FOR PLATING THICKNESS (INSIDE CONTACT BEAM).
- △ POINT-OF-CONTACT DIMENSION.
- △ CONTACT: AREA, 2.54-5.08mm[000100-000200] MATTE TIN OVER 1.27µm[000050] MIN NICKEL
- △ TE TRADEMARK AND CSA LOGO ARE MOLDED INTO HOUSING, THIS LOCATION.
- △ NO PART NUMBER MARKING REQUIRED FOR THIS PART.
- △ ROHS 2002/95/EC COMPLIANT.
- △ OBSOLETE PARTS: OBSOLETE CIS STREAMLINING PER D.RENAUD/D.SINISI

△	96.52[3.800]	99.06[3.900]	78	△	8-535585-9
△	95.99[3.780]	95.62[3.800]	76	△	8-535585-9
△	91.44[3.600]	93.98[3.700]	74	△	8-535585-8
△	88.90[3.500]	91.44[3.600]	72	△	8-535585-7
△	86.36[3.400]	88.90[3.500]	70	△	8-535585-6
△	83.82[3.300]	86.36[3.400]	68	△	8-535585-5
△	81.28[3.200]	83.82[3.300]	66	△	8-535585-4
△	78.74[3.100]	81.28[3.200]	64	△	8-535585-3
△	76.20[3.000]	78.74[3.100]	62	△	8-535585-2
△	73.66[2.900]	76.20[3.000]	60	△	8-535585-1
△	71.12[2.800]	73.66[2.900]	58	△	8-535585-0
△	68.58[2.700]	71.12[2.800]	56	△	7-535585-9
△	66.04[2.600]	68.58[2.700]	54	△	7-535585-8
△	63.50[2.500]	66.04[2.600]	52	△	7-535585-7
△	60.96[2.400]	63.50[2.500]	50	△	7-535585-6
△	58.42[2.300]	60.96[2.400]	48	△	7-535585-5
△	55.88[2.200]	58.42[2.300]	46	△	7-535585-4
△	53.34[2.100]	55.88[2.200]	44	△	7-535585-3
△	50.80[2.000]	53.34[2.100]	42	△	7-535585-2
△	48.26[1.900]	50.80[2.000]	40	△	7-535585-1
△	45.72[1.800]	48.26[1.900]	38	△	6-535585-9
△	43.18[1.700]	45.72[1.800]	36	△	6-535585-8
△	40.64[1.600]	43.18[1.700]	34	△	6-535585-7
△	38.10[1.500]	40.64[1.600]	32	△	6-535585-6
△	35.56[1.400]	38.10[1.500]	30	△	6-535585-5
△	33.02[1.300]	35.56[1.400]	28	△	6-535585-4
△	30.48[1.200]	33.02[1.300]	26	△	6-535585-3
△	27.94[1.100]	30.48[1.200]	24	△	6-535585-2
△	25.40[1.000]	27.94[1.100]	22	△	6-535585-1
△	22.86[0.900]	25.40[1.000]	20	△	6-535585-0
△	20.32[0.800]	22.86[0.900]	18	△	5-535585-9
△	17.78[0.700]	20.32[0.800]	16	△	5-535585-8
△	15.24[0.600]	17.78[0.700]	14	△	5-535585-7
△	12.70[0.500]	15.24[0.600]	12	△	5-535585-6
△	10.16[0.400]	12.70[0.500]	10	△	5-535585-5

SUPERSEDED BY 6-535585-0

△	35.56[1.400]	38.10[1.500]	30	4-535585-1
△	33.02[1.300]	35.56[1.400]	28	4-535585-0
△	30.48[1.200]	33.02[1.300]	26	3-535585-9
△	27.94[1.100]	30.48[1.200]	24	3-535585-8
△	25.40[1.000]	27.94[1.100]	22	3-535585-7
△	22.86[0.900]	25.40[1.000]	20	3-535585-6
△	20.32[0.800]	22.86[0.900]	18	3-535585-5
△	17.78[0.700]	20.32[0.800]	16	3-535585-4
△	15.24[0.600]	17.78[0.700]	14	3-535585-3
△	12.70[0.500]	15.24[0.600]	12	3-535585-2
△	10.16[0.400]	12.70[0.500]	10	3-535585-1

THIS DRAWING IS A CONTROLLED DOCUMENT. 3M FINISHER 08/00/01 3M Electronics

REVISIONS: 114-25018, 108-25022, 114-25018, 114-25018

RECEP/TACKLE ASSEMBLY, MOD N, DOUBLE ROW, DUAL ENTRY, 100K/100CL, VERTICAL MOUNT, AMPROD

CUSTOMER DRAWING: A100779, 535585