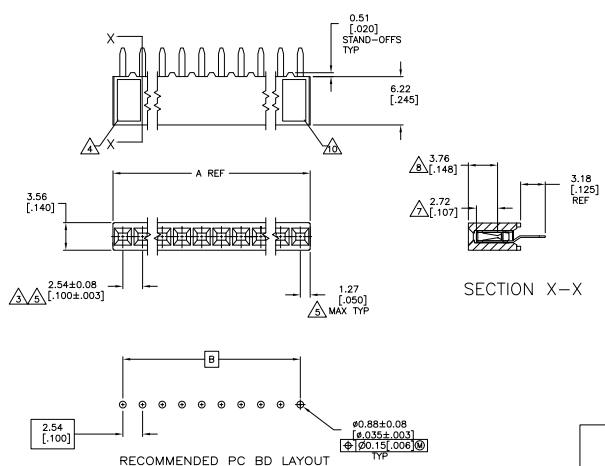


| REV | DATE | DESCRIPTION | BY | CHK | APP |
|-----|------|---------------------------|----|-----|-----|
| 00 | | REVISED PER EDD-11-010839 | | | |



- △ HOUSING: FLAME RETARDANT, GLASS FILLED, POLYESTER, COLOR: BLACK.
CONTACT: PHOSPHOR BRONZE
- △ CONTACT: DUPLEX PLATED 0.76μm[0.00030] MIN GOLD IN CONTACT AREA, 3.81-7.62μm[0.00150-0.00300] BRIGHT TIN-LEAD ON LEADS ALL OVER 1.27μm[0.00050] MIN NICKEL
- △ THESE DIMENSIONS PERTAIN TO CAVITY CENTERLINES ONLY - NOT TO CONTACT LOCATIONS
- △ PART NUMBER AND DATE CODE ARE MARKED IN APPROXIMATE LOCATION SHOWN.
- △ TOLERANCE IS NON-CUMULATIVE.
- △ 2 POSITION DATE CODE IS MARKED OPPOSITE SIDE OF THE CONNECTIVITY LOGO.
- △ POINT-OF-MEASUREMENT DIMENSION FOR PLATING THICKNESS (INSIDE CONTACT BEAM).
- △ POINT-OF-CONTACT DIMENSION.
- △ NO PART NUMBER MARKING REQUIRED FOR THIS PART.
- △ THE LOGO AND CSA LOGO ARE MOLDED INTO HOUSING.
- △ CONTACT: DUPLEX PLATED 0.76μm[0.00030] MIN GOLD IN CONTACT AREA, 3.81-7.62μm[0.00150-0.00300] MATTE TIN ON LEADS ALL OVER 1.27μm[0.00050] MIN NICKEL
- △ ROHS 2002/95/EC COMPLIANT.
- △ OBSOLETE PARTS: OBSOLETE CIS STREAMLINING PER D.RENAUD/D.SINISI

| FINISH | B | A | NO. OF POSN | PART NUMBER |
|--------|---------------|----------------|-------------|--------------|
| △ | 2.54 [100] | 5.08 [200] | 2 | △ 5-535541-9 |
| △ | 99.06 [3.900] | 101.60 [4.000] | 40 | △ 5-535541-8 |
| △ | 96.52 [3.800] | 99.06 [3.900] | 39 | △ 5-535541-7 |
| △ | 93.98 [3.700] | 96.52 [3.800] | 38 | △ 5-535541-6 |
| △ | 91.44 [3.600] | 93.98 [3.700] | 37 | △ 5-535541-5 |
| △ | 88.90 [3.500] | 91.44 [3.600] | 36 | △ 5-535541-4 |
| △ | 86.36 [3.400] | 88.90 [3.500] | 35 | △ 5-535541-3 |
| △ | 83.82 [3.300] | 86.36 [3.400] | 34 | △ 5-535541-2 |
| △ | 81.28 [3.200] | 83.82 [3.300] | 33 | △ 5-535541-1 |
| △ | 78.74 [3.100] | 81.28 [3.200] | 32 | △ 5-535541-0 |
| △ | 76.20 [3.000] | 78.74 [3.100] | 31 | △ 7-535541-9 |
| △ | 73.66 [2.900] | 76.20 [3.000] | 30 | △ 7-535541-8 |
| △ | 71.12 [2.800] | 73.66 [2.900] | 29 | △ 7-535541-7 |
| △ | 68.58 [2.700] | 71.12 [2.800] | 28 | △ 7-535541-6 |
| △ | 66.04 [2.600] | 68.58 [2.700] | 27 | △ 7-535541-5 |
| △ | 63.50 [2.500] | 66.04 [2.600] | 26 | △ 7-535541-4 |
| △ | 60.96 [2.400] | 63.50 [2.500] | 25 | △ 7-535541-3 |
| △ | 58.42 [2.300] | 60.96 [2.400] | 24 | △ 7-535541-2 |
| △ | 55.88 [2.200] | 58.42 [2.300] | 23 | △ 7-535541-1 |
| △ | 53.34 [2.100] | 55.88 [2.200] | 22 | △ 7-535541-0 |
| △ | 50.80 [2.000] | 53.34 [2.100] | 21 | △ 6-535541-9 |
| △ | 48.26 [1.900] | 50.80 [2.000] | 20 | △ 6-535541-8 |
| △ | 45.72 [1.800] | 48.26 [1.900] | 19 | △ 6-535541-7 |
| △ | 43.18 [1.700] | 45.72 [1.800] | 18 | △ 6-535541-6 |
| △ | 40.64 [1.600] | 43.18 [1.700] | 17 | △ 6-535541-5 |
| △ | 38.10 [1.500] | 40.64 [1.600] | 16 | △ 6-535541-4 |
| △ | 35.56 [1.400] | 38.10 [1.500] | 15 | △ 6-535541-3 |
| △ | 33.02 [1.300] | 35.56 [1.400] | 14 | △ 6-535541-2 |
| △ | 30.48 [1.200] | 33.02 [1.300] | 13 | △ 6-535541-1 |
| △ | 27.94 [1.100] | 30.48 [1.200] | 12 | △ 6-535541-0 |
| △ | 25.40 [1.000] | 27.94 [1.100] | 11 | △ 5-535541-9 |
| △ | 22.86 [0.900] | 25.40 [1.000] | 10 | △ 5-535541-8 |
| △ | 20.32 [0.800] | 22.86 [0.900] | 9 | △ 5-535541-7 |
| △ | 17.78 [0.700] | 20.32 [0.800] | 8 | △ 5-535541-6 |
| △ | 15.24 [0.600] | 17.78 [0.700] | 7 | △ 5-535541-5 |
| △ | 12.70 [0.500] | 15.24 [0.600] | 6 | △ 5-535541-4 |
| △ | 10.16 [0.400] | 12.70 [0.500] | 5 | △ 5-535541-3 |
| △ | 7.62 [0.300] | 10.16 [0.400] | 4 | △ 5-535541-2 |
| △ | 5.08 [0.200] | 7.62 [0.300] | 3 | △ 5-535541-1 |

| FINISH | B | A | NO. OF POSN | PART NUMBER |
|--------|---------------|----------------|-------------|--------------|
| △ | 2.54 [100] | 5.08 [200] | 2 | △ 3-535541-9 |
| △ | 99.06 [3.900] | 101.60 [4.000] | 40 | △ 3-535541-8 |
| △ | 96.52 [3.800] | 99.06 [3.900] | 39 | △ 3-535541-7 |
| △ | 93.98 [3.700] | 96.52 [3.800] | 38 | △ 3-535541-6 |
| △ | 91.44 [3.600] | 93.98 [3.700] | 37 | △ 3-535541-5 |
| △ | 88.90 [3.500] | 91.44 [3.600] | 36 | △ 3-535541-4 |
| △ | 86.36 [3.400] | 88.90 [3.500] | 35 | △ 3-535541-3 |
| △ | 83.82 [3.300] | 86.36 [3.400] | 34 | △ 3-535541-2 |
| △ | 81.28 [3.200] | 83.82 [3.300] | 33 | △ 3-535541-1 |
| △ | 78.74 [3.100] | 81.28 [3.200] | 32 | △ 3-535541-0 |
| △ | 76.20 [3.000] | 78.74 [3.100] | 31 | △ 2-535541-9 |
| △ | 73.66 [2.900] | 76.20 [3.000] | 30 | △ 2-535541-8 |
| △ | 71.12 [2.800] | 73.66 [2.900] | 29 | △ 2-535541-7 |
| △ | 68.58 [2.700] | 71.12 [2.800] | 28 | △ 2-535541-6 |
| △ | 66.04 [2.600] | 68.58 [2.700] | 27 | △ 2-535541-5 |
| △ | 63.50 [2.500] | 66.04 [2.600] | 26 | △ 2-535541-4 |
| △ | 60.96 [2.400] | 63.50 [2.500] | 25 | △ 2-535541-3 |
| △ | 58.42 [2.300] | 60.96 [2.400] | 24 | △ 2-535541-2 |
| △ | 55.88 [2.200] | 58.42 [2.300] | 23 | △ 2-535541-1 |
| △ | 53.34 [2.100] | 55.88 [2.200] | 22 | △ 2-535541-0 |
| △ | 50.80 [2.000] | 53.34 [2.100] | 21 | △ 1-535541-9 |
| △ | 48.26 [1.900] | 50.80 [2.000] | 20 | △ 1-535541-8 |
| △ | 45.72 [1.800] | 48.26 [1.900] | 19 | △ 1-535541-7 |
| △ | 43.18 [1.700] | 45.72 [1.800] | 18 | △ 1-535541-6 |
| △ | 40.64 [1.600] | 43.18 [1.700] | 17 | △ 1-535541-5 |
| △ | 38.10 [1.500] | 40.64 [1.600] | 16 | △ 1-535541-4 |
| △ | 35.56 [1.400] | 38.10 [1.500] | 15 | △ 1-535541-3 |
| △ | 33.02 [1.300] | 35.56 [1.400] | 14 | △ 1-535541-2 |
| △ | 30.48 [1.200] | 33.02 [1.300] | 13 | △ 1-535541-1 |
| △ | 27.94 [1.100] | 30.48 [1.200] | 12 | △ 1-535541-0 |
| △ | 25.40 [1.000] | 27.94 [1.100] | 11 | △ 535541-9 |
| △ | 22.86 [0.900] | 25.40 [1.000] | 10 | △ 535541-8 |
| △ | 20.32 [0.800] | 22.86 [0.900] | 9 | △ 535541-7 |
| △ | 17.78 [0.700] | 20.32 [0.800] | 8 | △ 535541-6 |
| △ | 15.24 [0.600] | 17.78 [0.700] | 7 | △ 535541-5 |
| △ | 12.70 [0.500] | 15.24 [0.600] | 6 | △ 535541-4 |
| △ | 10.16 [0.400] | 12.70 [0.500] | 5 | △ 535541-3 |
| △ | 7.62 [0.300] | 10.16 [0.400] | 4 | △ 535541-2 |
| △ | 5.08 [0.200] | 7.62 [0.300] | 3 | △ 535541-1 |

THIS DRAWING IS A CONTROLLED DOCUMENT. EPCOR INC. 108-25022

REPT ASSY, MOD N, SINGLE ROW, 100CL, VERTICAL BOARD MOUNT, CLOSED, TOP ENTRY, SHORT PWT. OF CONTACT

114-25018

CUSTOMER DRAWING

DATE 4.1