

4

3

2

1

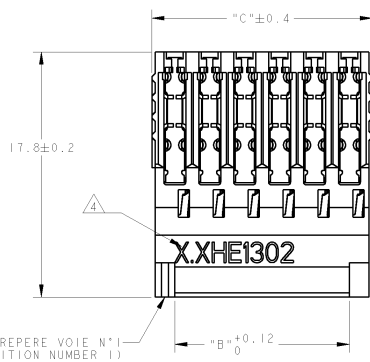
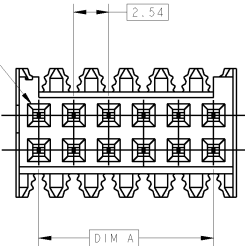
NOTICE: THIS DRAWING IS UNPUBLISHED.
 INFORMATION CONTAINED HEREIN IS UNCLASSIFIED.
 (C) COPYRIGHT 2000 BY TYCO ELECTRONICS CORPORATION. ALL RIGHTS RESERVED.
 TOUTES LES DIMENSIONS SONT EN MILLIMETRES.

FILS ADMISSIBLES (ACCEPTABLE WIRES)

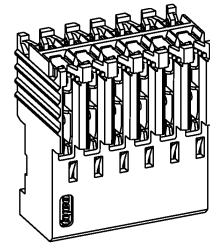
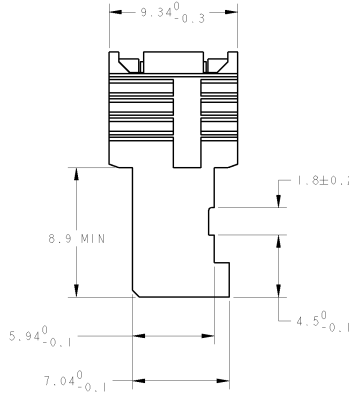
GAUGE (AWG) SECTION / 7 BRINS (7 STRANDS)	26-24 0.12-0.22mm ²
ISOLANT: Ø MAX / MATIERE (INSUL.: Ø MAX / MAT'L)	Ø 1 / PVC

LOC	DIST	REVISIONS			
F	7	REV	DESCRIPTION MODIFICATIONS	DATE	APP'D
		A	REDESSINE	REV00	AC
		B	REDESSINE SUR (REDRAWN ON) PRO/ENG	13SEP2002	CC YP
		C	UPDATED	29MAR2004	TC YP

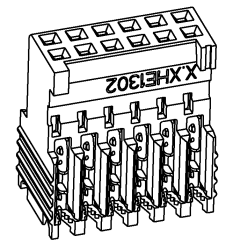
VOIE N°1
(POSITION NUMBER 1)



REPÈRE VOIE N°1
(IDENTIFIER POSITION NUMBER 1)



ECHELLE 4:1
SCALE



ECHELLE 4:1
SCALE

"C"	"A,B"	Nb DE POS.	REFERENCES (PART N°)
46.52	43.18	2x 18	1- 281790-8 *
38.90	35.56	2x 15	1- 281790-5 *
31.28	27.94	2x 12	1- 281790-2 *
26.20	22.86	2x 10	1- 281790-0 *
21.12	17.78	2x 8	0- 281790-8 *
16.04	12.70	2x 6	0- 281790-6 *
13.50	10.16	2x 5	0- 281790-5 *
10.96	7.62	2x 4	0- 281790-4 *
8.42	5.08	2x 3	0- 281790-3 *
5.88	2.54	2x 2	0- 281790-2 *

1 CES CONNECTEURS SONT PREVUS POUR ETRE ACCOUPLES AVEC LES EMBASES "HE1302" DOUBLE RANGEE

(THESE CONNECTORS ARE DESIGNED TO BE MATED WITH "HE1302" HEADERS DOUBLE ROW)

2 LES REFERENCES SUIVIES D'UN " * " SONT LES VERSIONS NORMALISEES SELON LA "CEI 603-8"

(THE PART-Nb FOLLOWED BY " * " ARE COVERED BY THE INTERNATIONAL STANDARD "IEC603-8")

△ REVETEMENT DES CONTACTS: 0.38µm D'OR DANS LA ZONE DE CONTACT, ETAIN SUR LA SORTIE C.A.D., SOUS-COUCHE NICKEL

(CONTACTS PLATING: 0.38µm GOLD ON CONTACT AREA, TIN ON I.D. BARREL, NICKEL UNDERPLATING)

△ "X.X" EST REMPLACÉ PAR LES DEUX DEUXIEME CHIFFRES DU COUPLE DES JAUGES AWG

(*X.X* REPLACED BY THE TWO SECOND DIGIT OF AWG RANGE AS DEFINED IN TABLE)

△ MATIERES - BOITIER: PBT UL94V0
- CONTACTS: BRONZE PHOSPHOREUX.

(MATERIALS - HOUSING: PBT UL94V0
- CONTACTS: PHOSPHOR BRONZE)

DIMENSIONS (mm) TOLERANCES (mm) 0 PRECISE (0.05mm) 1 PLC/DEC: A0.3 2 PLC/DEC: B 3 PLC/DEC: C 4 ANGLES 5°		DWG REVISION: 20NOV2000 CORRIGENDUM DWG NO: 28NOV2000 DWG REV: 2 DWG DATE: 20NOV2000 DWG BY: P.FEYRON DWG CHECK: L.ROUSSEAU DWG APPROV: L.ROUSSEAU DWG DATE: 20NOV2000 DWG BY: P.FEYRON DWG CHECK: L.ROUSSEAU DWG APPROV: L.ROUSSEAU DWG DATE: 20NOV2000	NAME: HE 1302 PLUG, 180° IDC DOUBLE ROW TYPE: PLUG CAGE CODE: A2100779 DRAWING NO: 281790 SHEET: 1 OF 1 REV: C
---	--	--	---