

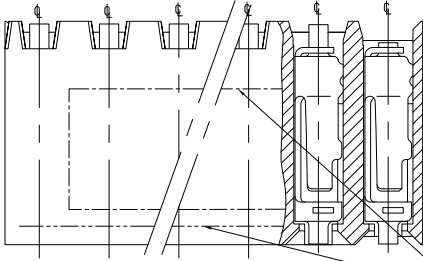
4

3

2

1

THIS DRAWING IS UNPUBLISHED. RELEASED FOR PUBLICATION. ALL RIGHTS RESERVED.



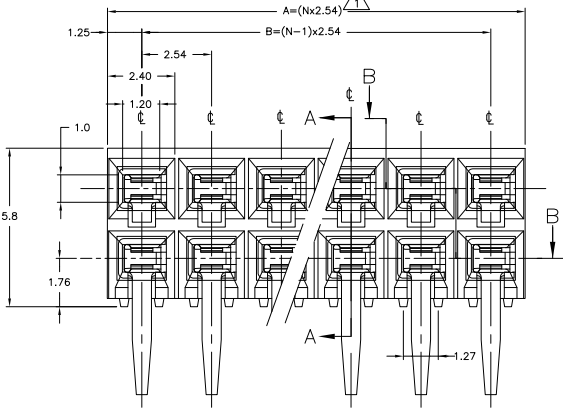
SECTION B-B/TOP VIEW

PART NO.	N POS PER ROW	DIMENSIONS	
		A	B
216604-2	2	5.08	7.62
216604-3	3	7.62	10.16
216604-4	4	10.16	12.7
216604-5	5	12.7	15.24
216604-6	6	15.24	17.78
216604-7	7	17.78	20.32
216604-8	8	20.32	22.86
216604-9	9	22.86	25.4
1-216604-10	10	25.4	27.94
1-216604-11	11	27.94	30.48
1-216604-12	12	30.48	33.02
1-216604-13	13	33.02	35.56
1-216604-14	14	35.56	38.1
1-216604-15	15	38.1	40.64
1-216604-16	16	40.64	43.18
1-216604-17	17	43.18	45.72
1-216604-18	18	45.72	48.26
1-216604-19	19	48.26	50.8
2-216604-20	20	50.8	53.34
2-216604-21	21	53.34	55.88
2-216604-22	22	55.88	58.42
2-216604-23	23	58.42	60.96
2-216604-24	24	60.96	63.5
2-216604-25	25	63.5	66.04
3-216604-26	26	66.04	68.58
3-216604-27	27	68.58	71.12
3-216604-28	28	71.12	73.66
3-216604-29	29	73.66	76.2
3-216604-30	30	76.2	78.74
4-216604-31	31	78.74	81.28
4-216604-32	32	81.28	83.82
4-216604-33	33	83.82	86.36
4-216604-34	34	86.36	88.9
4-216604-35	35	88.9	91.44
4-216604-36	36	91.44	93.98
4-216604-37	37	93.98	96.52
4-216604-38	38	96.52	99.06
4-216604-39	39	99.06	101.6
4-216604-40	40	101.6	104.14
4-216604-41	41	104.14	106.68
4-216604-42	42	106.68	109.22
4-216604-43	43	109.22	111.76
4-216604-44	44	111.76	114.3
4-216604-45	45	114.3	116.84
4-216604-46	46	116.84	119.38
4-216604-47	47	119.38	121.92
4-216604-48	48	121.92	124.46
4-216604-49	49	124.46	127.0
4-216604-50	50	127.0	129.54
4-216604-51	51	129.54	132.08
4-216604-52	52	132.08	134.62
4-216604-53	53	134.62	137.16
4-216604-54	54	137.16	139.7
4-216604-55	55	139.7	142.24
4-216604-56	56	142.24	144.78
4-216604-57	57	144.78	147.32
4-216604-58	58	147.32	149.86
4-216604-59	59	149.86	152.4
4-216604-60	60	152.4	154.94
4-216604-61	61	154.94	157.48
4-216604-62	62	157.48	160.02
4-216604-63	63	160.02	162.56
4-216604-64	64	162.56	165.1
4-216604-65	65	165.1	167.64

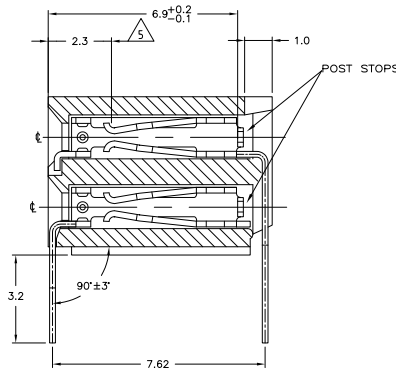
LOC	DIST	REVISIONS		DATE	BY	APPD
IR	-	F	LR			
		HS	NOTE 7 CORRECTED	30JAN2012	MHM	RP

NOTES:

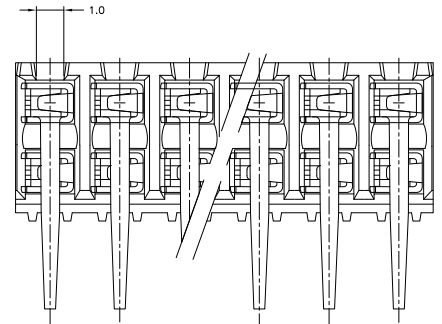
- 1 TO DETERMINE DIMENSION TAKE N= NR. OF POS FOR EXAMPLE, 10 POS., N x 2.54 = 25.4mm. FOR ORDER NR. USE BASIC NR. + NR. OF POS. FOR EXAMPLE, 2 POS. = 216604-2 (SHORTEST VERSION) 65 POS. = 6-216604-5 (LONGEST VERSION)
- 2 HOUSING MATERIAL, GREEN GLASS FILLED POLYESTER, UL 94V-0 CONTACT MATERIAL, PHOSPHOR BRONZE.
- 3 PLATING, UNDERCOATING, 1.3µm Ni AT CONT.PLACE, 0.8µm Au AT SOLDER-TINES, 3.0-5.0µm TIN
- 4 MATES WITH 0.63 SQUARE/ROUND MODU POSTS
- 5 CONTACT POINT
- 6 RECOMMENDED P.C.BOARD THICKNESS 1.6mm
- 7 PRINTED: THE WORD "TE" [FOR 2 TO 6 POS] THE WORD "TE" & PRODUCTION DATE [FOR 7 TO 12 POS] THE WORD "TE", PRODUCTION DATE & BASIC PART NO. [FOR 13 TO 65 POS] AND A DASHED LINE OVER THE LENGTH OF HOUSING TO INDICATE CONTACT MATING SIDE.



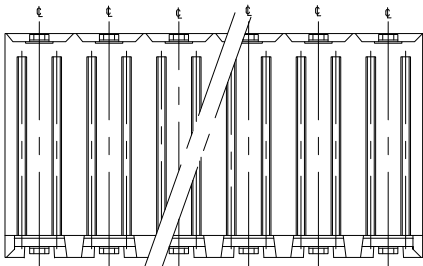
SECTION A-A



REAR VIEW



RECOMMENDED P.C. BOARD-HOLE LAYOUT



BOTTOM VIEW

THIS DRAWING IS A CONTROLLED DOCUMENT. DIM: W.R. ANNO/KKE 19-12-91

CHK: R. de Blieck 07 NOV 95

APPD: R. de Blieck 07-NOV-95

TE Connectivity

HV 190 HOR. ASS'Y DUAL ROW

GOLD VERSION

(MAX. 2X65 POSITIONS)

108-19072

APPLICATION SPEC: A2 00779 C=216604

SIZE: 10:1

SCALE: 10:1

SHEET: 1 of 1

REV: H5

CUSTOMER DRAWING